



Carekit™ accessible toilet solutions

PRACTICAL PRODUCT PACKAGES
TO MEET REQUIREMENTS FOR
PUBLIC ACCESSIBLE TOILETS
AS1428.1-2009

 **ENWARE**
installing**confidence**

www.enware.com.au

Carekit™ accessible toilet solutions

The Carekit™ range provides complete accessible toilets solutions which comply with AS1428.1-2009.

We have combined the necessary elements for an accessible public facility into kits for ease of ordering and to eliminate the trouble of ordering separate items from various suppliers running the risk of non-compliance.

Each of the Carekit™ elements are designed to address the Premises Standard requirements. The hard work has been done for you with the promise that they will satisfy AS1428.1-2009. We have grouped the products into eight different kits offering S or P trap toilets and right or left wash basin shelf space as well as a selection of thermostatic mixers and non-thermostatic tapware.



TOILET



GRAB RAILS



BASIN



TAP



AS1428.1-2009 accessible toilet Carekit™

Carekit™ - 100 SERIES

CONTENTS

- IFO freestanding increased height toilet
- Pressalit Sign toilet seat in Anthracite Grey with lid
- IFO Sign basin 600
- Enware-Oras Viva mixer with extended handle
- Angled grab rails - stainless steel

Order Code:

CARE101P - P Trap Toilet

CARE101S - S Trap Toilet

Variations available:

Upgrade tap to Enware-Oras Viva battery operated sensor tap.

CARE102S - S Trap

CARE102P - P Trap



Carekit™ - 300 SERIES

CONTENTS

- IFO freestanding increased height toilet
- Pressalit Sign toilet seat in Anthracite Grey with lid
- IFO Sign basin 600
- Enware-Oras Viva mixer with extended handle
- Aquablend 1500 Thermostatic Mixing Valve
- Angled grab rails - stainless steel

Order Code:

CARE301P - P Trap Toilet

CARE301S - S Trap Toilet

Variations available:

Upgrade tap to Enmatic Viva battery operated sensor tap.

CARE302S - S Trap

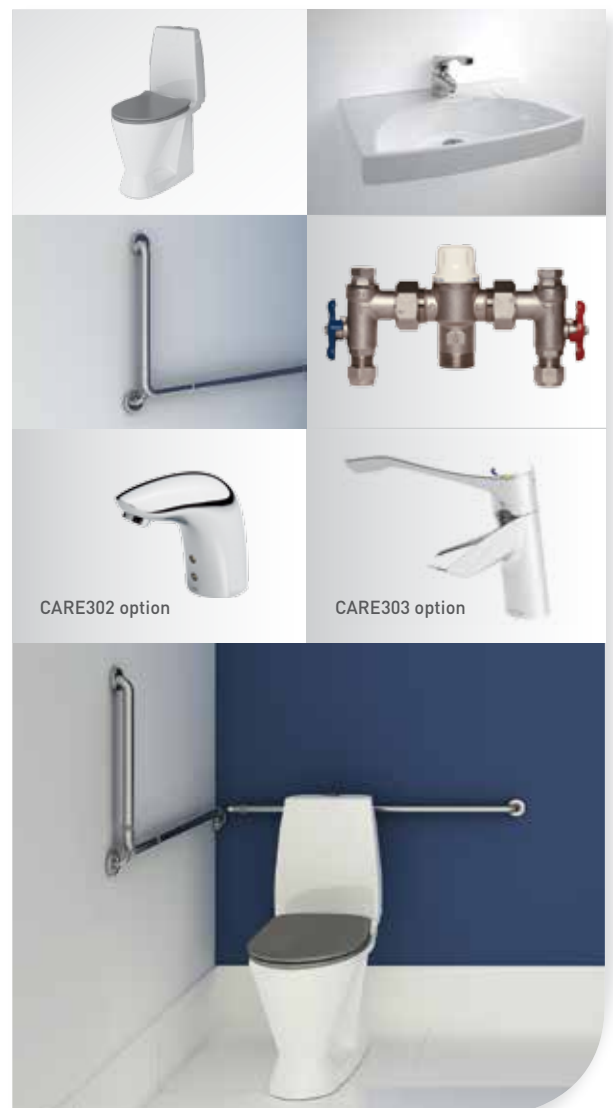
CARE302P - P Trap

Variations available:

Upgrade tap to Aquablend SQX Sequential Thermostatic Mixer with extended handle (this replaces the need for a separate in-wall thermostatic mixing valve).

CARE303S - S Trap

CARE303P - P Trap



Carekit™ - 500 SERIES

CONTENTS

- IFO freestanding increased height toilet
- Pressalit Sign toilet seat in Anthracite Grey with lid
- IFO Sign basin 770 vitreous china basin with shelf
- Enware-Oras Viva mixer with extended handle
- Aquablend 1500 Thermostatic Mixing Valve
- Angled grab rails - white powder coated stainless steel

Order Code:

CARE501PL - P Trap Toilet, Right Shelf (Left Bowl) Basin

CARE501PR - P Trap Toilet Left Shelf (Right Bowl) Basin

CARE501SL - S Trap Toilet Right Shelf (Left Bowl) Basin

CARE501SR - S Trap Toilet Left Shelf (Right Bowl) Basin

Variations available:

Upgrade tap to Enmatic Vega battery operated sensor tap

CARE502PL - P Trap Toilet, Right Shelf (Left Bowl) Basin

CARE502PR - P Trap Toilet Left Shelf (Right Bowl) Basin

CARE502SL - S Trap Toilet Right Shelf (Left Bowl) Basin

CARE502SR - S Trap Toilet Left Shelf (Right Bowl) Basin

Upgrade tap to Aquablend SQX Sequential Thermostatic Mixer with extended handle. (this replaces the need for a separate in-wall thermostatic mixing valve).

CARE503PL - P Trap Toilet, Right Shelf (Left Bowl) Basin

CARE503PR - P Trap Toilet Left Shelf (Right Bowl) Basin

CARE503SL - S Trap Toilet Right Shelf (Left Bowl) Basin

CARE503SR - S Trap Toilet Left Shelf (Right Bowl) Basin



sample room configuration

SAMPLE ACCESSIBLE TOILET LAYOUT

In accessible toilets the circulation space is a critical factor as is providing compliant components to be installed at the required heights.

The complex process of creating a compliant accessible toilet is detailed in the Australian Standard AS1428.1-2009.

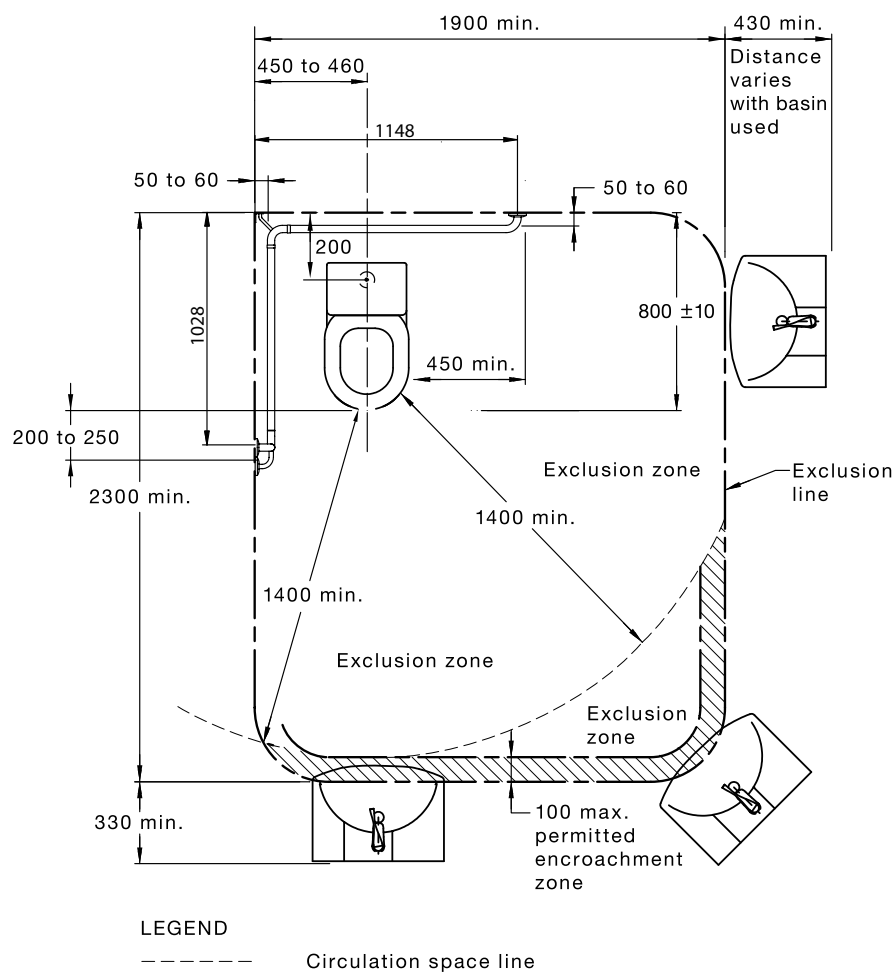
Advice from respected Access Consultants throughout Australia indicates that the Carekit™ range complies with AS1428.1-2009.

Here is a sample room drawing to be used as a guide only.

Please refer to AS1428.1-2009 and 2010 amendments for detailed requirements and measurements.

A comprehensive installation guide is supplied with all Carekits.

Important: This information is provided as a guide only and is based on AS1428.1-2009. Independent design assessment and approval by an appropriately qualified consultant is required to ensure compliance with standards and building code requirements.



IFO FREESTANDING INCREASED HEIGHT TOILET

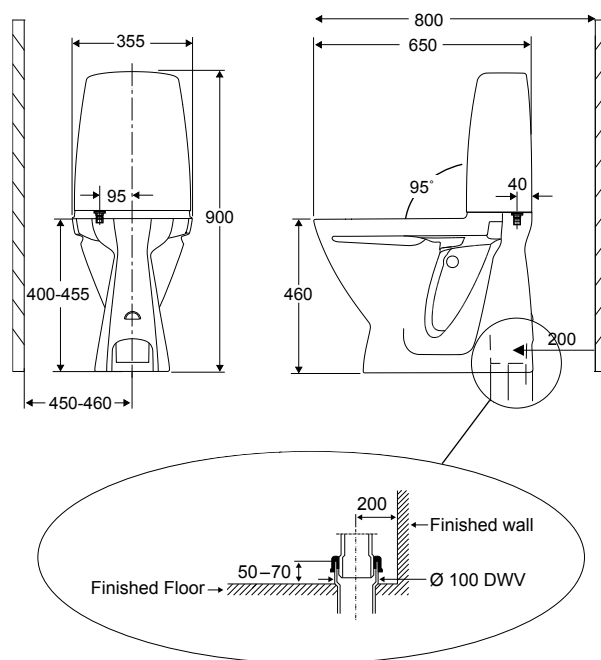
The foundation of the kits is the IFO increased height toilet.

FEATURES

- Freestanding WC
- Raised height flush button
- 95° cistern to pan angle
- Integrated cistern complies on a deemed-to-satisfy basis and serves as a backrest "on" the accessible toilet as required in AS1428.1-2009 and 2010 amendments
- Cistern complies with all angles thrust test of 1100N for backrest requirements
- Pan load rated to 400kg
- Seamless cistern offering back and side transfer support
- Allows for undisturbed coving seal
- Tested to comply with 90% of commonly used Australian shower commode chairs (including A90 wheelchair)
- Fully glazed inside rim to avoid bacteria growth
- WaterMark Certified AS1172
- WELS 4 star rated (4.5/3L Flush)

TECHNICAL INFORMATION

- 800mm finished wall to front of pan (based on 200mm off set)
- All pans are to be fixed using 316 stainless steel screws
- 460mm rim height, 480mm with seat



PRESSALIT SIGN TOILET SEAT WITH LID

The Anthracite Grey toilet seat features commercial grade stainless steel hinges and buffers to combat lateral movement. Weight load rated to a maximum of 250kg.

The coloured seat provides luminance contrast against the pan to assist those with visual impairment and to meet the 30% luminance contrast requirement in AS1428.1-2009.

BASINS

The two basin options are the main variation between the Carekit™ 100, 300 Series and 500 Series.

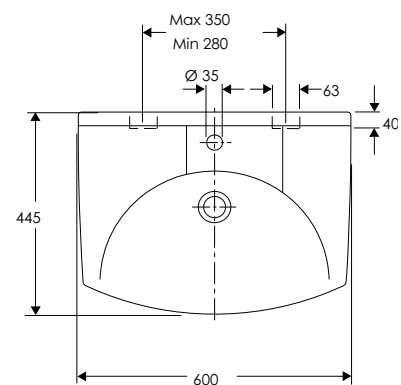
IFO SIGN BASIN 600

FEATURES

- 600mm long wall mounted vitreous china basin
- Fully glazed under and over preventing bacteria growth
- Reverse shape wash bowl increases user area
- Back to wall lip for protection
- Easy clean recessed tap and soap area

TECHNICAL INFORMATION

- Plug and waste included (32mm)
- Supplied with mounting bolts



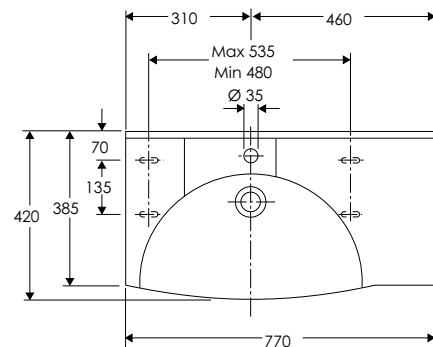
IFO SIGN BASIN 770

FEATURES

- 770mm long wall mounted vitreous china basin with shelf
- Eliminates the need for a shelf on the wall
- Right or left shelf space option
- Fully glazed under and over preventing bacteria growth
- Reverse shape wash bowl increases user area
- Back to wall lip for protection
- Easy clean recessed tap and soap area

TECHNICAL INFORMATION

- Available in right or left configuration (Left hand Bowl shown on drawing opposite)
- Plug and waste included (32mm)



GRAB RAILS

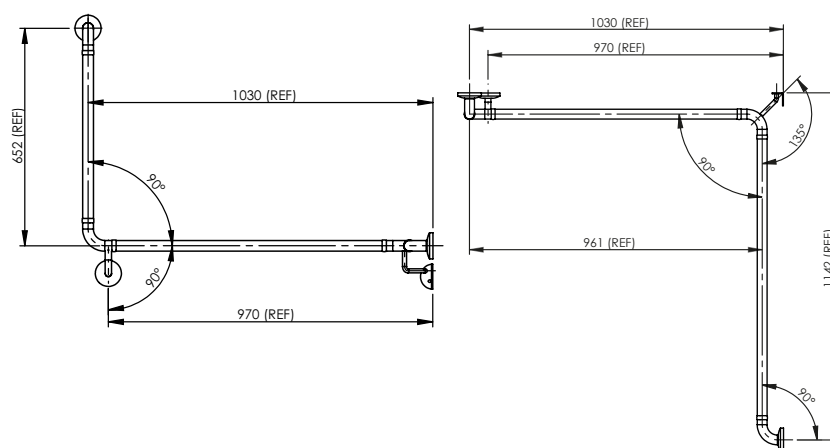
ANGLED GRAB RAIL - WHITE POWDER COATED STAINLESS STEEL

FEATURES

- No obstruction to the passage of the hand along the grab rail
- Flexible design allows installation for both right and left hand layouts
- Modern stylish look

TECHNICAL INFORMATION

- Powder coated white
- 32mm diameter



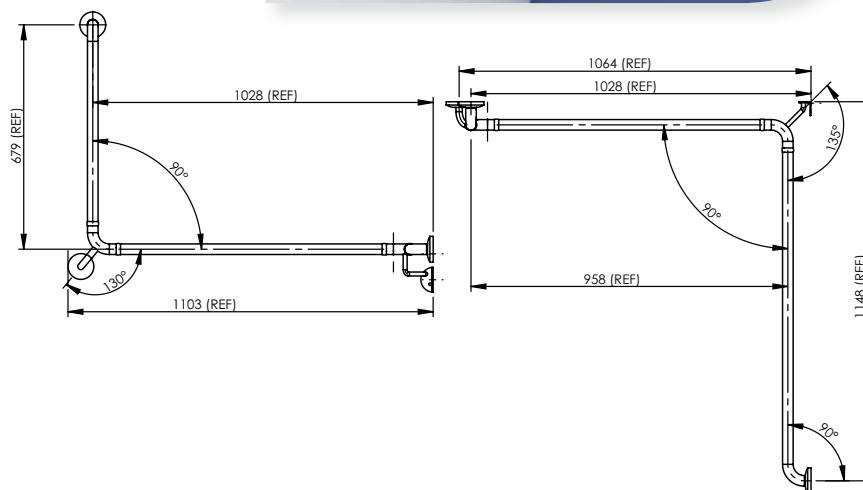
ANGLED GRAB RAIL - STAINLESS STEEL

FEATURES

- No obstruction to the passage of the hand along the grab rail
- Flexible design allows installation for both right and left hand layouts

TECHNICAL INFORMATION

- Stainless steel finish
- 32mm diameter



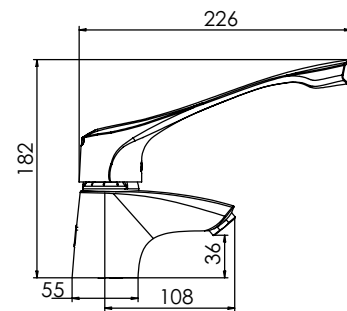
TAPS

ENWARE-ORAS VIVA MIXER WITH EXTENDED HANDLE

- Cartridge with metal connection improves mixer strength and vandal resistance
- Oversized colour indicators
- Integral mesh strainer
- Dual fixing points to help reduce risk of rotation
- Surface mount washer for sealing
- Concealed flow controlled aerator technology for a clean look
- WELS registered
- Chrome standard finish
- Flexible hose with reverse thread into mixer body
- Extended lever allows for easier operation from front of basin
- WaterMark Certified to AS/N253718
- 15 year warranty

TECHNICAL INFORMATION

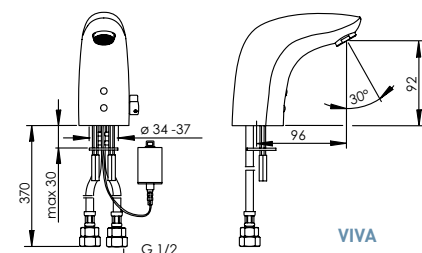
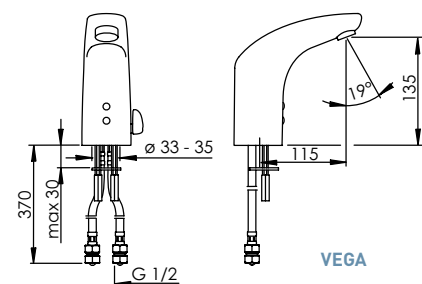
- Inlet Connection: 15mm (½") BSP
- Min-Max Rated Static Pressure: 50-1000kPa
- Maximum Dynamic Pressure: 500kPa (AS/NZS3500)
- Operating Temperature Range: 0-80° C

**ENMATIC VEGA AND VIVA SERIES SENSOR TAP WITH OPTIONAL TEMPERATURE ADJUSTER**

- Auto-focus infrared sensing technology with triangulation for a more consistent, reliable operation
- Improved user friendliness with intelligent activation and after-flow technology
- Low power consumption
- Vandal resistant dual point fixings reduces the risk of rotation in vandal prone applications
- Electronics have IP67 rated protection against water and humidity
- Single temperature set-up supplied standard with mixing lever and extra inlet supplied for easy conversion for temperature adjustable control
- WELS 6 Star rated (5.4lpm)
- WaterMark Certified AS/N253718
- 2 year warranty

TECHNICAL INFORMATION

- Connection: 3/8" & 1/2" BSP Flexi Connector
- Recommended Working Pressure: 100 - 500kPa
- Maximum Operating Temperature: 70°C
- Sensor Range Technology: Optimally Preset using Auto-Focus Technology
- Battery Powered: 6V Lithium 2CR5 battery
- Protection Class: IP 67
- Max Flow Period: 2 Minutes



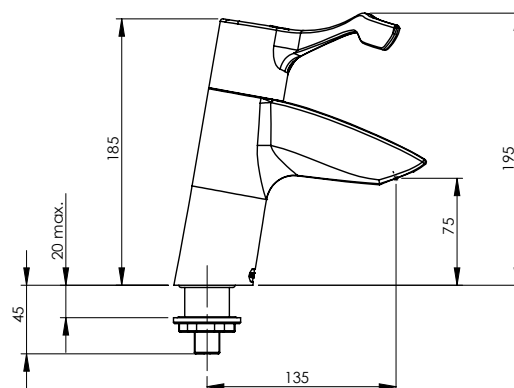
Enware thermostatic mixers and tapware must be installed in accordance with the provisions of AS/NZS3500. Installations not complying with AS/NZS3500 may void the product and performance warranty provisions.

AQUABLEND SQX THERMOSTATIC BASIN MIXER WITH EXTENDED LEVER HANDLE

- Provides personal temperature control at 'Point of Use'
- WaterMark Certified to AS4032:1
- NSW Health approved
- Cool to touch & non-conductive mixer body
- Colour indication on handle for easy identification
- Easy to clean design
- Serviceable in-situ
- Fixed spout
- Self draining spout design
- Australian designed and manufactured
- Extended lever allows for easier operation from front of basin
- 5 year warranty

TECHNICAL INFORMATION

- Hot Temperature Supply Range: 55°C - 85°C
- Cold Temperature Supply Range: 5°C - 25°C
- Adjustable Temperature: 35°C - 46°C
- Operating Working Pressure: 20 - 500* kPa
- Maximum Outlet Pressure in accordance with AS/NZ3500: 500kPa
- For optimum temperature stability it is recommended that the inlet pressures be balanced to within +/-10%

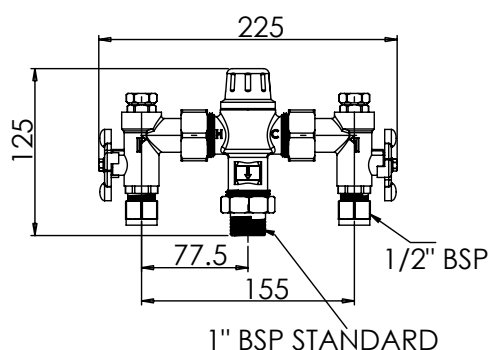


AQUABLEND 1500 THERMOSTATIC MIXING VALVE

- WaterMark Certified to AS4032.1
- Scald and thermal shock protection with rapid thermal shut-off should either the cold or hot water supply fail
- Highly responsive temperature control, maintaining outlet temperature within +/- 2°C under changing inlet temperature and pressure conditions
- Aquablend's design delivers excellent flow, operating at a minimum pressure of 20kPa
- Supplied complete with isolating valves, non-return valves and dual stage strainers incorporating temperature/pressure test ports
- Flexible installation - inlet and outlet connections may be rotated to suit pipework design
- 5 year warranty

TECHNICAL INFORMATION

- Temperature Adjustment Range: 35° to 48°C
- Dynamic Inlet Pressures: 20kPa Min – 500kPa Max
- Static Inlet Pressure: 1000kPa Max
- Flow Rates: 42 lpm@300kPa pressure loss
- Minimum Flow Rate for Stable Outlet Temperature: 4 litres/min
- For optimum temperature stability it is recommended that the inlet pressures be balanced to within +/-10%



Enware thermostatic mixers and tapware must be installed in accordance with the provisions of AS/NZS3500. Installations not complying with AS/NZS3500 may void the product and performance warranty provisions.

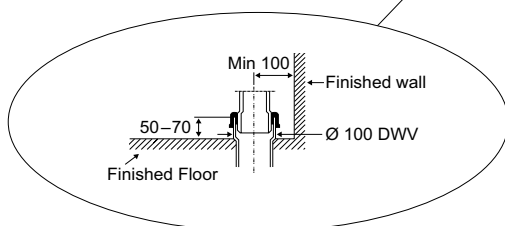
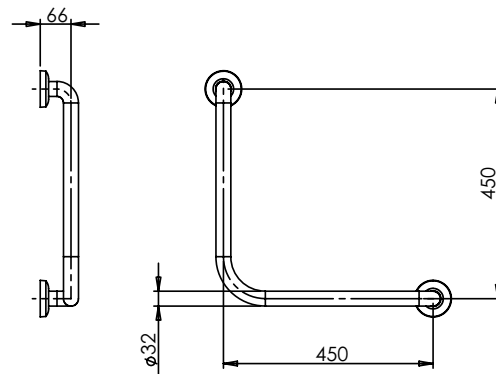
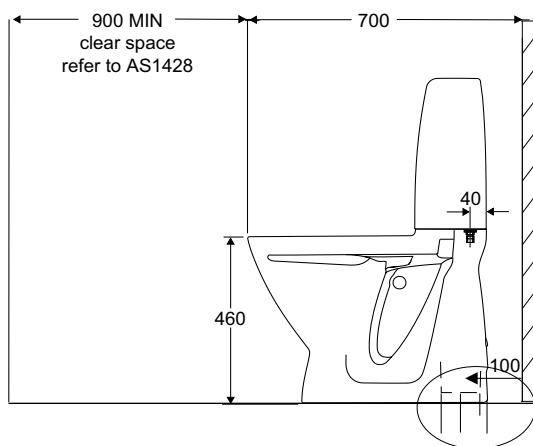
AS1428.1-2009 accessible ambulant toilet Carekit™

Enware's Ambulant Carekit™ provides assistance to people with restricted mobility and complies with the ambulant requirements as outlined in AS1428.1-2009.

- The freestanding IFO toilet has an increased height for easier use and includes raised height flush buttons
- The environmentally friendly WC is dual flush with a 4 Star WELS water efficiency rating
- Pressalit Sign toilet seat in Anthracite Grey with lid provides luminance contrast against the pan to assist those with visual impairment
- The heavy duty seat withstands the rigours of installation in public amenities with a 250kg weight load rating
- Each pair of "L" shaped angled grab rail configuration is made from 32mm stainless steel

Order Code:

CAREAMBS



ALSO AVAILABLE FROM ENWARE

BARRIER FREE DRINKING FOUNTAINS

Disability friendly drinking fountains ease the difficulty associated with accessibility. The range of barrier free, stainless steel drinking fountains have a contemporary design and accommodate both wheelchair and pedestrian access. The fountains project outwards allowing wheelchair access for people with a disability and alleviate the problem of drinking facilities that are too high.

Order Code:
CDF320D Pictured here



BARIATRIC PAN

A uniquely designed floor standing toilet pan dedicated to assist bariatric users (150kg + or Body Mass Index of 40+). Supplied in P trap and an option for S trap conversion. This pan has dual access panels on both left & right sides, and is finished in high gloss paint. Overall dimensions of this Enware pan ensure that a bariatric commode chair can be placed over it without obstruction.

Order Code:
EWS505B Pictured here



AQUABLEND SQX™ THERMOSTATIC MIXERS

Australia's first WaterMark certified point of use thermostatic mixers incorporating sequential mix technology. Designed and manufactured in Australia, the Aquablend SQX delivers an advanced choice for safe warm water delivery in higher risk applications such as hospitals and aged care facilities.

Order Code:
ATM611 Pictured here



IFO JUNIOR TOILET

One-piece free standing junior toilet. Suitable for child care or infant school applications. A new addition to our IFO range of specialist sanitary ware.

Order Code:
IFO6820 Pictured here



NURSING BENCHES AND CHANGE TABLES

Designed to cater for both user and carer the nursing benches and change tables are height adjustable to allow for easier transfer from different heights i.e. a wheelchair. An appropriate working height reduces the risk of lower back injuries for carers.

Order Code:
EP-R8538021 Pictured here



HAND HELD SHOWERS AND GRAB RAILS

Designed to provide superior performance and safety, our range includes a variety of grab rails and water efficient showers.

Order Code:
SGR027CST Pictured here




installing**confidence**

OUR OFFICES

NEW SOUTH WALES | VICTORIA | SOUTH AUSTRALIA | WESTERN AUSTRALIA
QUEENSLAND | NEW ZEALAND | ASIA | MIDDLE EAST

1300 369 273 | WWW.ENWARE.COM.AU | INFO@ENWARE.COM.AU