



# specialist sanitary ware

IFO SCANDINAVIAN DESIGN  
AND QUALITY  
FOR RESIDENTIAL, COMMERCIAL,  
AGED CARE AND HEALTHCARE  
APPLICATIONS

- Basins, Vanities and Furniture
- Toilets and Urinals
- Accessible Toilet Solutions

# basins, vanities and furniture

**Commercial bathrooms require a more durable, purposeful solutions to perform reliably and support the buildings function.**

**The Ifö range of sanitary ware is designed for healthcare, aged care, disability, commercial and residential.**

European made, the clean, elegant and functional range of basins and furniture are designed to harmonise the needs of hygiene with aesthetics of enduring simplicity and beauty. The Ifö range features fully glazed under and over surfaces for reduced risk of bacteria growth. The product of Danish architect Knud Holscher, the first principle of the Ifö range is to ensure that each product is adaptable, works to perfection and will continue to do so. The ranges are renewed on a consistent basis, while the design footprint remains consistent to deliver value and longevity in new, renovation and replacement projects.



## ifö basins

All of Ifö's wash basins are made of porcelain — an attractive and above all durable natural material. A porcelain wash basin retains its original colour for years and is very tough to scratch. The glaze seals up the ceramic's natural pores, giving the porcelain its smooth, glossy surface.

This makes the wash basin easy to clean and highly resistant to wear. Wash basins are fully glazed under and over preventing bacteria growth.

All Ifö basins feature:

- Reverse shape wash bowl for increased vanity area
- Back to wall lip for wall protection
- Easy clean recessed tap and soap area
- Supplied with short plug and waste 40mm

*Available in two models: Sign and Cera series.*

*We offer alternate tap holes and overflow options, please specify your requirements when ordering.*



## single bowl

### SIGN SERIES

- Compact 500mm wide model
- Popular 600mm wide series, available with a shroud option. Can satisfy AS1428.1
- 700mm wide series provides additional surface area, with soap dispenser option available. Shroud also available. Can satisfy AS1428.1
- 770mm series provides an option for either left or right shelf space. Shroud option available Cabinet compatible
- 900mm series provides an option for a centred bowl or left or right bowl to suit room configurations Cabinet compatible



#### SIGN 900 SERIES

With Centre Bowl.  
Also available with left or right side bowl.

Order Code:

**IF07482** - 1 x taphole 1 x overflow

**IF07482-100** - 1 x taphole no overflow\*

**IF07480-100** - No taphole no overflow\*

### CERA SERIES

- Fully rimmed, wall mounted basin with optional shroud available
- 600mm
- Model less overflow suitable for clinical scrub use
- Curved back direct water back into bowl
- Rear lip protection against wall damage
- Can satisfy AS1428.1



#### SIGN 600 SERIES

Order Code:

**IF07362** - 1 x taphole 1 x overflow

**IF07362-100** - 1 x taphole or no overflow\*

**IF07360-100** - No taphole no overflow\*



#### SIGN 700 SERIES

With Right Bowl IFO7752, shown with SLM606D single lever mixer. Tapware sold separately.  
Also available with left or right side bowl.



#### CERA 600 SERIES

IFO2360-100 shown here with shroud IFO4316FM2 (optional).

## double bowl

Vanity top wash basin with two bowls, providing large vanity surfaces at the back end and between bowls.

Available in two models: 1200mm wide and 1500mm wide.

For vanity mounting only — refer to furniture in this section.

Supplied with one tap hole and overflow per bowl.



### SIGN 1500 SERIES

Order code:

**IF07272** - 1 x taphole 1 x overflow per bowl

Options:

**IF047101** - 600mm base cabinet

**IF047099** - 300mm base cabinet

**IF047300** - 600mm drawer front - white

**IF047299** - 300mm drawer front - white



### SIGN 1200 SERIES

Order code:

**IF07492** - 1 x taphole 1 x overflow

Options:

**IF096487** - Free Hanging Bracket Set

**IF015917** - Microtrap Chrome

**IF04346F-900** - Shroud

## hospital basins

- A concave fronted wash basin with centre spine to provide superior access and minimise splashing
- Suitable and recommended for surgical scrub down
- Centre spine breaks water minimising splashes
- Boomerang shaped bowl with splash guard
- Fully glazed for infection control



### IF02642

For basin mounted tapware.

Order code:

**IF0264200041** - 1 x taphole, no overflow  
— includes brackets & waste



### IF02630

To suit wall mounted tapware.

Order code:

**IF02630-19** - with strainer waste valve

**IF0263006627** - with strainer waste valve, flex tube, wall box and special bracket

Options:

**IF096377** - mounting brackets

## twyford basins

The ideal choice when a domestic look is required in conjunction with a vanity benchtop.

### FEATURES:

- Supplied as standard with 1 taphole and overflow
- Includes basin fixing kit
- Can be used with a wide selection of basin mounted tapware
- Fully rimmed basin to capture and drain all water



### TWY-GN4661WH

Basin Semi Recess 560 Galerie

1 x Taphole 1 x Overflow

Shown with Enware-Delabie TempoSoft Time Flow TFC740

\*Tapware not included

## IFO — SIGN 75 VANITY UNIT — LEFT AND RIGHT BOWL

Complete vanity unit package with white painted cabinet and 770mm Ifö Sign wash basin.

### CABINET FEATURES:

- Supplied factory assembled
- Marine grade cabinetry MDF 313 with 5 coats paint and 5 coats UV lacquer
- Single Hettich soft close drawer with adjustable height shelves
- Telescopic towel rail
- Open at back for plumbing access
- Supplied with fixing kit

### BASIN FEATURES:

- 770mm long vitreous china basin
- Fully glazed under and over preventing bacteria growth
- Reverse shape wash bowl increases user area
- Back to wall lip for protection
- Easy clean recessed tap and soap area
- Supplied with short plug and waste 40mm
- All basin mounting contact surfaces to be sealed with a high grade anti-bacterial silicone of appropriate colour

#### Order Code:

**IF042542** - Sign 75 Vanity Unit - left bowl  
1 x taphole 1 x overflow

**IF042543** - Sign 75 Vanity Unit - right bowl  
1 x taphole 1 x overflow

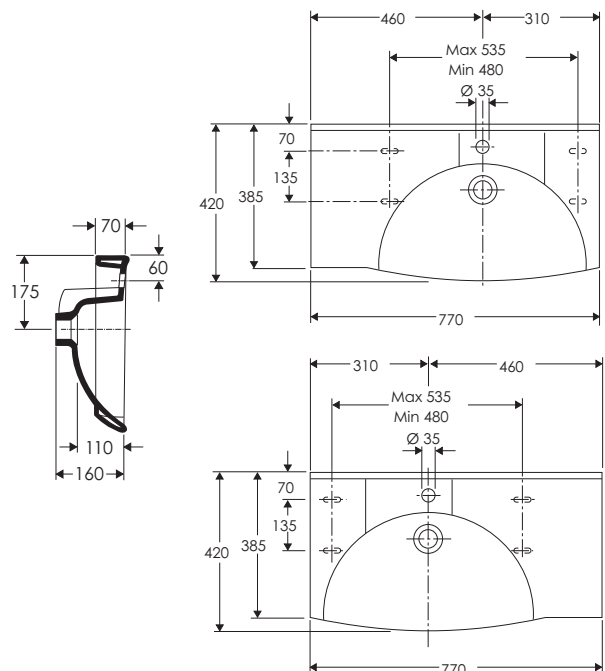
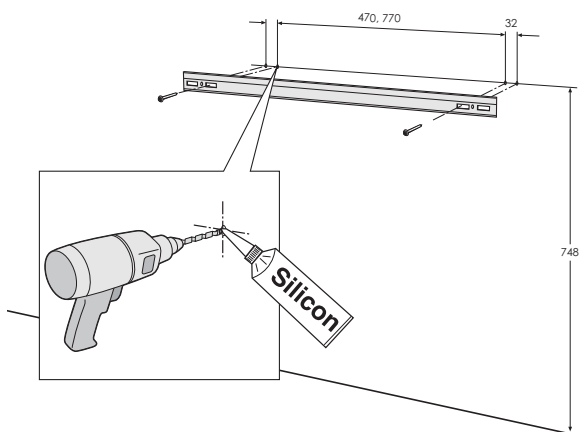
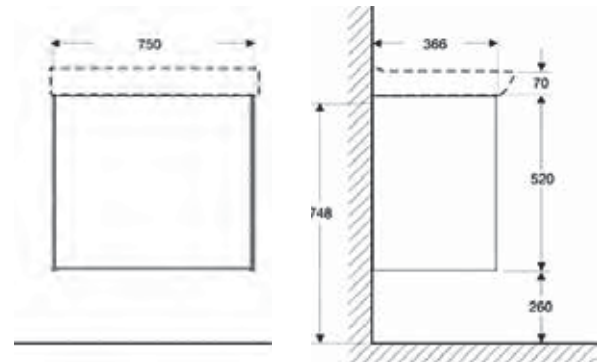
#### Options:

**IF015917** - Microtrap Chrome

**IF047111** - Support Leg set



*Taps not included*



**IFO — SIGN 90 VANITY UNIT**

Complete vanity unit package with white painted cabinet and 920mm Ifö Sign wash basin.

**CABINET FEATURES:**

- Supplied factory assembled (with separate draw front separate)
- Marine grade cabinetry MDF 313 with 5 coats paint and 5 coats UV lacquer
- Single Hettich soft close drawer with adjustable height shelf
- Open at back for plumbing access
- Supplied with fixing kit

**BASIN FEATURES:**

- 920mm long vitreous china basin
- Fully glazed under and over preventing bacteria growth
- Reverse shape wash bowl increases user area
- Back to wall lip for protection
- Easy clean recessed tap and soap area
- Supplied with short plug and waste 40mm
- All basin mounting contact surfaces to be sealed with a high grade anti-bacterial silicone of appropriate colour

**Order Code:**

**IF042544** - Sign 90 Vanity Unit - 1 x taphole  
1 x overflow

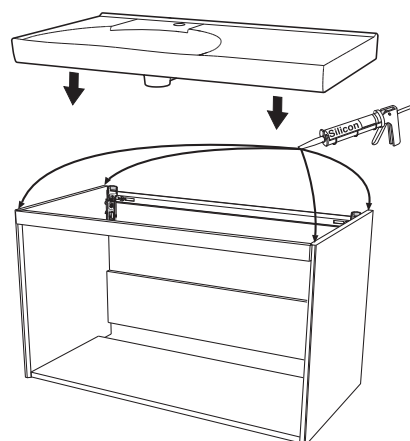
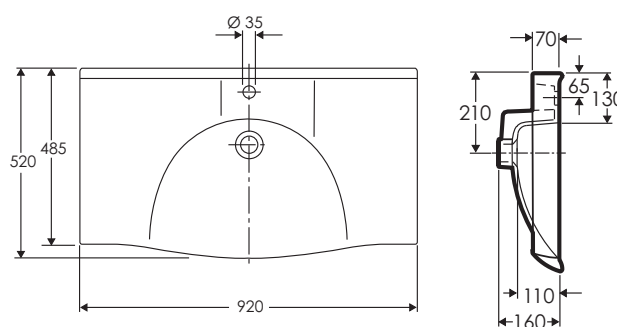
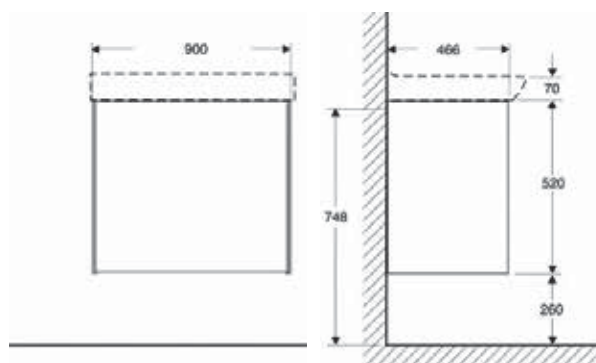
**Options:**

**IF015917** - Microtrap Chrome

**IF047111** - Support Bracket Set

**IF042544**

*Taps not included*





## IFO — SENSE BASE CABINETS

Base cabinet including drawer front in white with a soft closing drawer

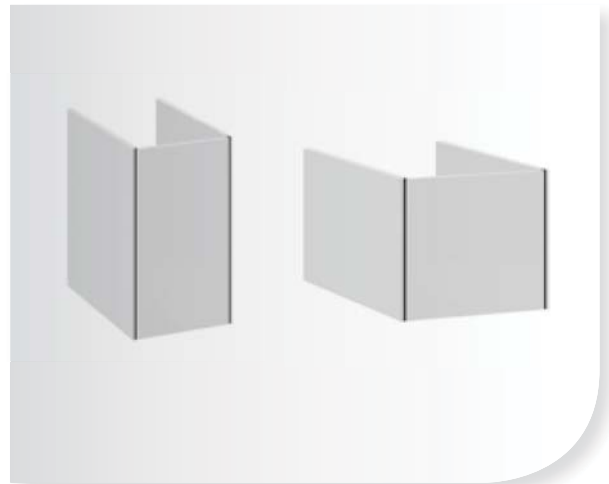
- Supplied factory assembled
- Marine grade cabinetry MDF 313 with 5 coats paint and 5 coats UV lacquer
- Open at back for plumbing access
- Suit Sign 770, 900, 1200 and 1500 basins

Order Code:

**IF042500 IFO Sense Cabinet 300 x 466 x 520 - White**

**IF042505 IFO Sense Cabinet 600 x 466 x 520 - White**

**IF042510 IFO Sense Cabinet 900 x 466 x 520 - White**



## baby bath

### FEATURES:

- Wash plane baby bath to insert on top of vanity (vanity not supplied)
- Made in heavy duty ceramic stone
- Protective anti-bacterial gel coating for infection control
- Foam insulation for heat retainment
- 12 year warranty
- All bath mounting contact surfaces to be sealed with high grade anti-bacterial silicone of appropriate colour.

Order Code:

**IF0SGBB1 - IFO Baby bath**



### RELATED PRODUCTS

Toilets — Page 341

Single Lever Mixers — Page 127

Electronic Tapware — Page 239

Time Flow Tapware — Page 82



**Ifö — Cera Basin 600**

IFO2360-100

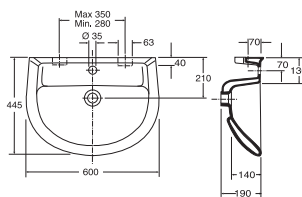
No Taphole No Overflow\*

IFO2362

1 x Taphole 1 x Overflow

IFO2362-100

1 x Taphole No Overflow\*



Mounting bolts included

**Ifö — Hospital Basin**

IFO2630-19

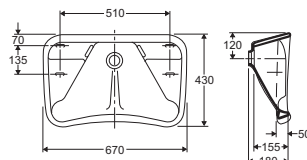
with strainer waste valve

IFO263006627

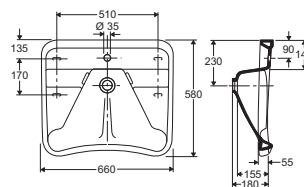
with strainer waste valve, flex tube, wall box and special bracket

IFO96377

Mounting brackets

**Ifö — Hospital Basin**

IFO264200041

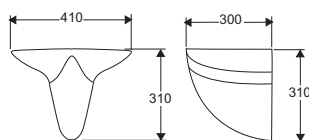
1 x taphole, no overflow  
— includes brackets & waste

Supplied with wall mounting brackets

**Ifö — Cera Shroud 600**

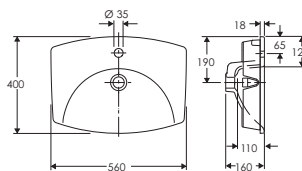
IFO4316FM2

Shroud

**Ifö — Sign Drop In Basin**

IFO7152

1 x Taphole 1 x Overflow

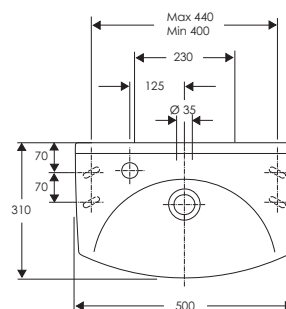
**Ifö — Sign Basin Compact 500**

IFO7318

1 x Taphole 1 x Overflow  
(taphole offset to left)

IFO98205

Wall Hook



IFO7350-100	No Taphole No Overflow*
IFO7352	1 x Taphole 1 x Overflow
IFO7352-100	1 x Taphole No Overflow*



IFO7262 1 x Taphole 1 x Overflow per bowl



IFO7272 1 x Taphole 1 x Overflow per bowl



IFO7360-100	No Taphole No Overflow*
IFO7362	1 x Taphole 1 x Overflow
IFO7362-100	1 x Taphole or No Overflow*



IFO7370-100	No Taphole No Overflow*
IFO7372	1 x Taphole 1 x Overflow
IFO7372-100	1 x Taphole No Overflow*



IFO737200055009 1 x Taphole No overflow incl.  
soap dispenser and dome & waste\*



1300 369 273 | [WWW.ENWARE.COM.AU](http://WWW.ENWARE.COM.AU)

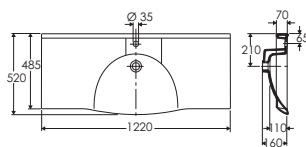
**Ifö — Sign Basin — Centre bowl 1200**

IFO7492

1 x Taphole 1 x Overflow\*\*

IFO96487

Free hanging bracket set



Can be cabinet or wall mounted with brackets

**Ifö — Sign Basin Compact 770**

IFO7750-100

Left Bowl No Taphole No Overflow\*\*

IFO7752

Left Bowl 1 x Taphole 1 x Overflow\*\*

IFO7752-100

Left Bowl 1 Taphole No Overflow\*\*

IFO7760-100

Right Bowl No Taphole No Overflow\*\*

IFO7762

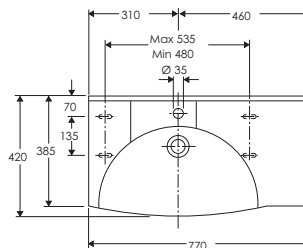
Right Bowl 1 x Taphole 1 x Overflow\*\*

IFO7762-100

Right Bowl 1 Taphole No Overflow\*\*

IFO96377

Bracket Set



Can be cabinet or wall mounted with brackets

**Ifö — Sign Basin 900**

IFO7460-100

Left Bowl No Taphole No Overflow\*\*

IFO7462

Left Bowl 1 x Taphole 1 x Overflow\*\*

IFO7462-100

Left Bowl 1 x Taphole No Overflow\*\*

IFO7470-100

Right Bowl No Taphole No Overflow\*\*

IFO7472

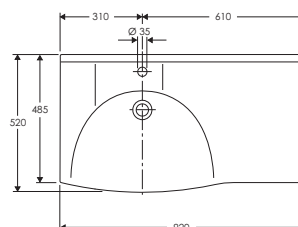
Right Bowl 1 x Taphole 1 x Overflow\*\*

IFO7472-100

Right Bowl 1 x Taphole No Overflow\*\*

IFO96377

Bracket Set



Can be cabinet or wall mounted with brackets

**Wall Brackets to Suit Ifö Sign 900 and 1200 Basins**

IFO96487

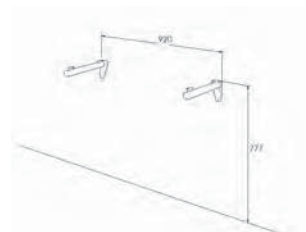
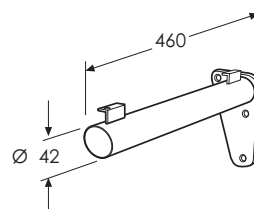
Pair - 1x Left and 1x Right Side Bracket

IFO96487L

Left Side Bracket Only (For use where 300mm cabinet supports Right side of basin)

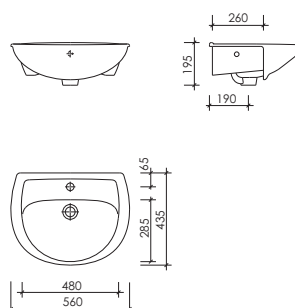
IFO96487R

Right Side Bracket Only (For use where 300mm cabinet supports Left side of basin)

**Twyford Galerie 560mm Semi-Recessed**

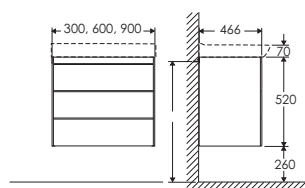
TWY-GN4661WH

1 x Taphole 1 x Overflow

**Ifö — Sense 300 Base Cabinet**

IFO42500

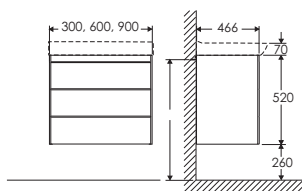
300 x 466 x 520mm - White



### Ifö — Sense 600 Base Cabinet

IFO42505

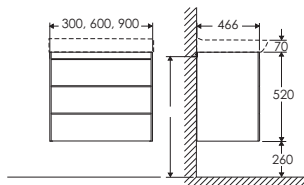
600 x 466 x 520mm - White



### Ifö — Sense 900 Base Cabinet

IFO42510

900 x 466 x 520mm - White



### Ifö — Sign 75 Vanity Unit — Left Bowl

IFO42542

1x Taphole and 1x Overflow  
(Taps sold separately)



### Ifö — Sign 75 Vanity Unit — Right Bowl

IFO42543

1x Taphole and 1x Overflow  
(Taps sold separately)



### Ifö — Sign 90 Vanity Unit

IFO42544

Centre Bowl - 1x Taphole and 1x Overflow  
(Taps sold separately)



### Microtrap with Chrome Plated Pop-up Waste

IFO15917

Microtrap Chrome



# toilets and urinals

**Commercial bathrooms require a more durable, purposeful solutions to perform reliably and support the buildings function. The Ifö range of sanitary ware is designed for healthcare, aged care, disability, commercial and residential.**

European made, the clean, elegant and functional range of basins and furniture are designed to harmonise the needs of hygiene with aesthetics of enduring simplicity and beauty.

The Ifö range features fully glazed under and over surfaces for reduced risk of bacteria growth. The product of Danish architect Knud Holscher, the first principle of the Ifö range is to ensure that each product is adaptable, works to perfection and will continue to do so. The ranges are renewed on a consistent basis, while the design footprint remains consistent to deliver value and longevity in new, renovation and replacement projects.



## ifö toilets

The Ifö Sign range of WC units has a one-piece cistern lid. This means that the flush water does not come into contact with the outer porcelain casing, which helps it to stay dry and condensation free.

That in turn makes it hard for dust and dirt to stick.

An integral cistern also makes flushing quieter.

Smart, clean, quiet and simple.



## IFO SIGN TOILET

- One-piece freestanding toilet with seamless cistern lid for ease of cleaning enabled with Fresh WC hygienic dosing solution in the flush button
- Seamless cistern for added infection control
- 420mm seat height (excluding seat)
- Option to place WC at 45 degree angle in corner
- WELS 4 star rated (4.5/3L Flush)
- WaterMark Certified

Order Code:

**IF06860 - S Trap**

**IF06862 - P Trap**

Options:

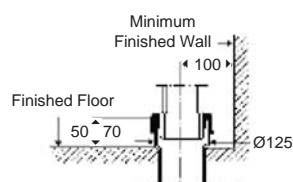
**IF098308 - Raised Flush Button**

Seats sold separately

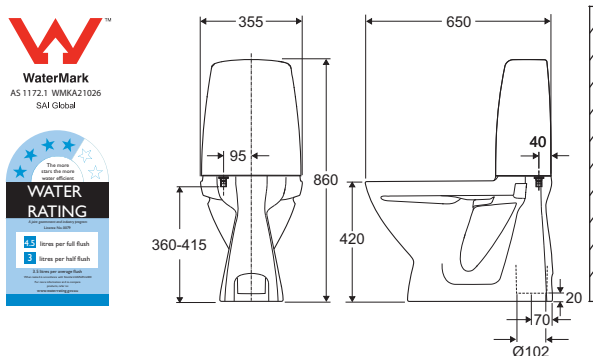
**IF0724D55999 - Pictured with - Pressalit IFO Hard Seat - white**

**IF094568 - Fresh sticks (10 packets of 5 sticks)**  
— refer to Page 345

**IF098015 - Floor anchor**



Seat not included



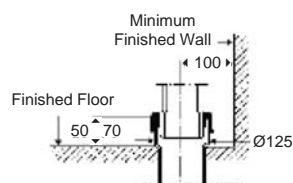
## IFO SIGN TOILET INCREASED HEIGHT

- White freestanding toilet with 460mm seat height (excluding seat), cistern as reservoir and backrest
- Integrated cistern is a deemed-to-satisfy solution which serves as a backrest "on" the accessible toilet as required in AS1428.1-2009
- Pan load rated to 400kg
- Tested to comply with 90% of commonly used Australian commode chairs (including A90 wheelchair)
- Fully glazed on back and inside rim to avoid bacteria growth
- Increased foot print for enhanced stability
- WELS 4 star rated (4.5/3L Flush)
- WaterMark Certified

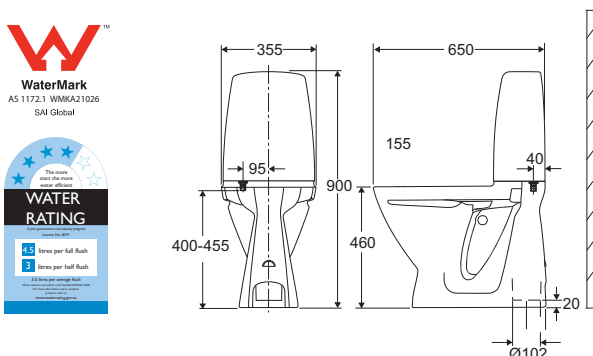
Order Code:

**IF06861 - S Trap**

**IF06872 - P Trap**



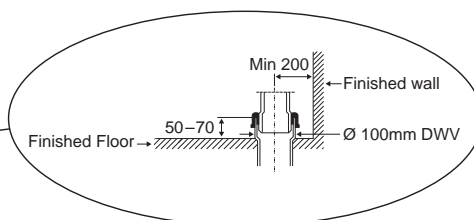
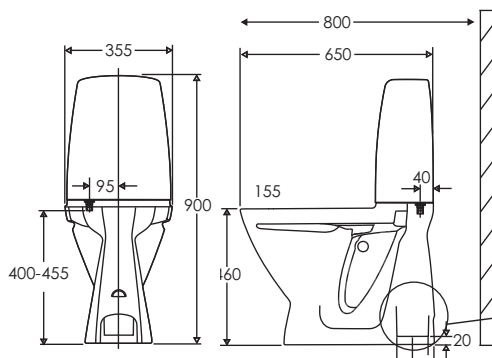
Seat not included



**IFO SIGN ACCESSIBLE TOILET KIT — AS1428.1-2009****KIT INCLUDES:**

- Ifö freestanding increased height toilet
- Ifö Sign Toilet Seat Double Flap — Anthracite Grey
- Raised dual flush button
- WaterMark Certified

Order Code:

**CARE6861 - S Trap****CARE6872 - P Trap****IFO TOILET WITH SUPPORT ARMS****INCLUDES:**

- Free Standing Ifö WC
- Ifö Sign Toilet Seat Single Flap — Anthracite Grey
- Raised Flush Button
- Support Arms

**FEATURES:**

- Arms easy to mount onto WC with hard seat
- Toilet roll holders fitted on both left & right hand sides
- Arms individually raise up and back for full access
- System load tested for 150kg
- Free Standing WC
- 460mm seat height (480mm including Ifö Sign Seat)
- 800mm finished wall to front of pan (based on 200mm off set)
- 95 degree cistern to pan angle
- Cistern complies with all angles thrust test (for AS1428.1:2009) of 1100 N for backrest requirements
- Pan load rated to 400kg
- Seamless cistern offering back and side transfer support
- Patented Fresh WC blue stick technology enabled for increased infection control
- All pans are to be fixed using high grade anti-bacterial silicone of appropriate colour and where exposed mounting holes are provided, 316 stainless steel screws are to be used



- Provides 100% consistency and reliability as combined WC and back support — no additional backrest needed meet requirements of AS1428.1:2009

Order Code:

**CARE600 - Ifö Toilet - S Trap Single Flap Seat with Support Arms****CARE601 - Ifö Toilet - S Trap Double Flap (with lid) Seat with Support Arms****IF098125 - Support arms only**

Variations available:

**IF098125XL - Arm Support w/ left hand nurse call\*****IF098125XR - Arm Support w/ right hand nurse call\***

\*left or right hand position determined from seating position



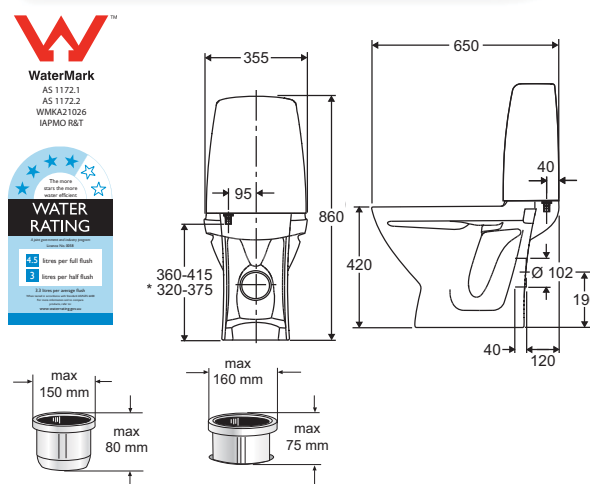
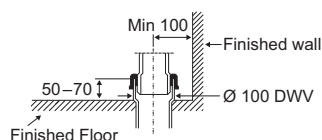
## IFO JUNIOR PAN

One-piece free standing junior toilet. Suitable for child care or infant school applications

- Free standing WC
- Seamless cistern for added infection control
- Supplied with a dedicated toilet seat
- WELS 4 star rated (4.5/3L Flush)
- Ergonomically designed to suit young children between 3 & 6 years old
- Finished installed height including seat = 315mm
- Cistern bolted onto pan for enhanced back support
- Fully glazed on back and inside rim to avoid bacteria growth
- Patented Fresh WC blue stick technology enabled for increased infection control
- All pans are to be fixed using high grade anti-bacterial silicone

Order Code:

**IF06820 - Ifö Sign Low Height Toilet - S Trap**



## IFO TOILET SEATS

State of the art quality WC seats designed to suit Ifö Sign WC's.

### FEATURES:

- Rubber stability buffers
- Colour options available
- Choose with or without lid
- Optional fixed hinge
- Soft and rounded edges
- Curved cover surface
- Made by Pressalit with a 10 year warranty

Order Code:

Presalit:

**IF0553000-BD1999 - Sign Seat no lid (white)**

**IF0553112-BD1999 - Sign Seat no lid (grey)**

**IF0554000-BD1999 - Sign Seat with lid (white)**

**IF0554112-BD1999 - Sign Seat with lid (grey)**

**IF0754000-D57999 - Soft Close Seat with lid (white)**

Pressalit Ifö:

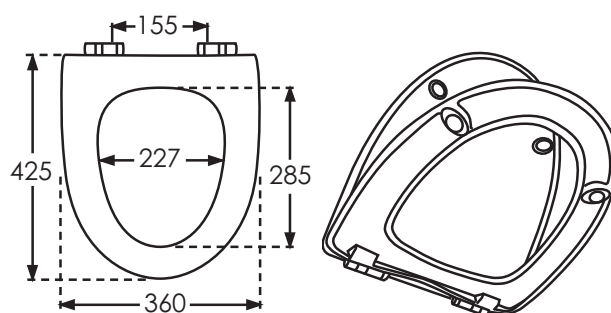
**IF0724D55999 - Hard Seat with Fixed Hinges (White)**

**IF0BD1999 - Stainless Steel Hinge only**

Ifö Sign:

**IF099565 - Soft plastic seat (white)**

**IF099579 - Hard seat with fixed hinges (black)**



Product details in this guide are indicative only and may change without notice.

### IFO FRESH STICKS

- Ifö Fresh Sticks ensure that the WC unit is always kept fresh — smells nice and looks clean. Simple to use — tablet is simply dropped into the inside of the WC unit
- Reduces the risk of calcium build-up
- More hygienic cleaning
- Protective cellophane wrapping dissolves after several flushes

Order Code:

**IF094568** - 10 packets of 5 sticks



## urinals

### IFO 0.8L SENSOR URINAL

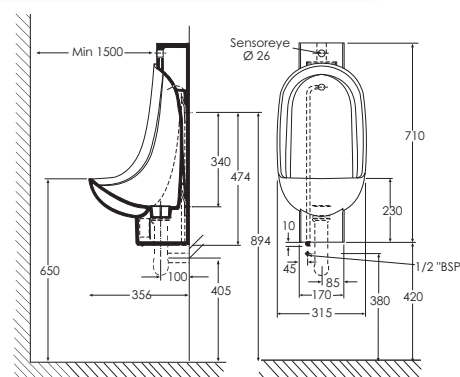
- A porcelain urinal with a hygienic sensor flush integrated into the porcelain as a flushing mechanism with no in-wall requirements
- Consumes only 0.8 L/flush including pre and post flush
- Active stadium mode
- Simple installation
- Easy maintenance access
- Water Saving
- WaterMark Certified
- WELS 5 Star water efficiency rating
- WELS 5 Star water efficiency rating

Order Code:

**IF04134** - 0.8L Sensor urinal with back inlet

Accessories:

**IF091743** - Anti vandal cover



**IFO CERO WATERLESS URINAL**

- Waterless urinal with an environmentally friendly oil used as a water trap
- Installation does not need any water or electrical connections
- Made of vitreous china
- WaterMark Certified

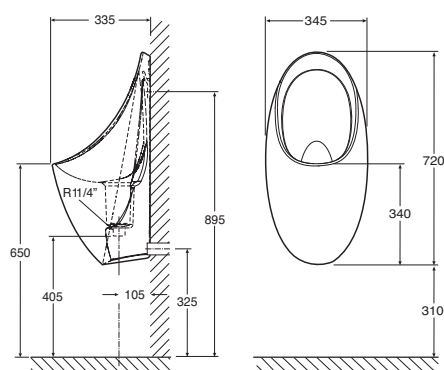
Order Code:

**IF04125 - Waterless urinal including starter kit**

Accessories:

IF091862 - Cero stop oil 6 x 250ml bottles

IF091864 - Cero stop detergent 6 x 500ml bottles



## bariatric toilet pan

A unique design of floor standing toilet pan, which is dedicated to assist bariatric users (150kg + or Body Mass Index of 40+). Supplied in P trap and an option for S trap conversion. This pan has dual access panels on both left & right sides, and is finished in high gloss paint. Overall dimensions of this Enware pan ensure that a bariatric commode chair can be placed over it without obstruction. Orientated for placement in hospitals, specialist clinics and nursing homes.

## FEATURES :

- 304 Grade stainless steel construction weight tested to 900kg
- Seamless one piece smooth bore trap & bend
- 100mm P trap outlet suitable for a standard pan collar
- S trap conversion (set out 100-230mm from finished wall)
- Comfortable heavy duty toilet seat designed for bariatric users
- Substantial pan footprint ensures stability
- Mimics the design overlay of AS1428.1 for WC pans
- Works with a wide range of inwall concealed flushing systems including Enware, Geberit and Valsir

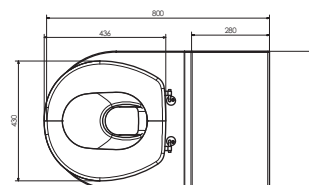
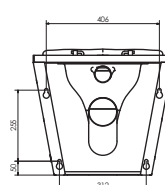
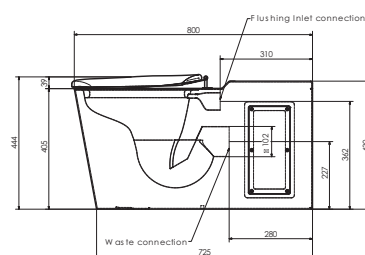
Order Code:

**EWS505B - White Bariatric WC**  
Pan and Toilet seat (no lid)

Options:

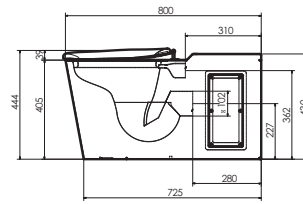
WC touch activated dual flush (front access) EMF411M-4

WC touch activated dual flush (duct access) EMF410M-4



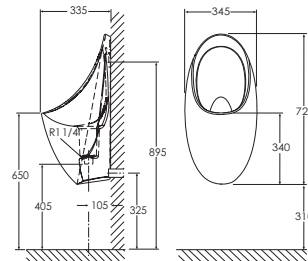
**White Bariatric Toilet Pan with Seat (no lid)**

EWS505B

**Ifö — Cero Waterless Urinal**

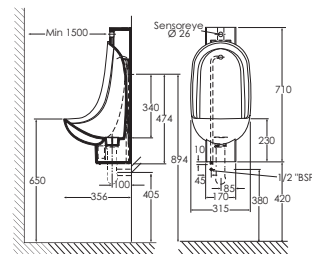
IFO4125

Cero Waterless Urinal including starter kit

**Ifö 0.8L Sensor Urinal**

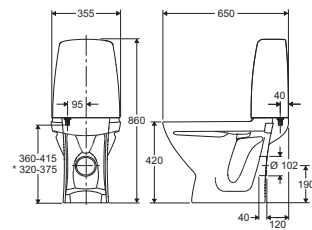
IFO4134

0.8L Sensor Urinal with back inlet

**Ifö Sign Junior WC — S Trap**

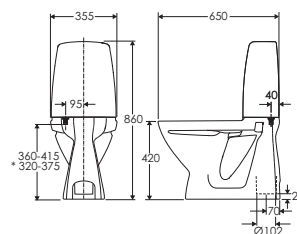
IFO6820

Supplied with a dedicated toilet seat

**Ifö Sign Toilet**

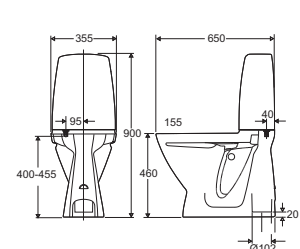
IFO6860

S Trap (seat sold separately)

**Ifö Sign Toilet Increased Height**

IFO6861

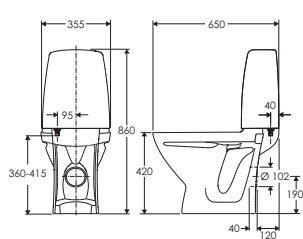
S Trap (seat sold separately)



## Ifö Sign Toilet

IFO6862

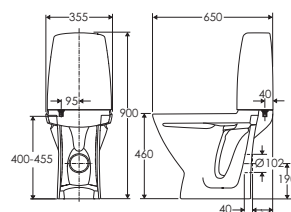
P Trap (seat sold separately)



## Ifö Sign Toilet Increased Height

IFO6872

P Trap (seat sold separately)



## Ifö Pressalit Sign Toilet Seat

IFO553000-BD1999

Hard Seat Single Flap (No Lid) - White

IFO553112-BD1999

Hard Seat Single Flap (No Lid) - Grey

IFO554000-BD1999

Hard Seat with Lid - White

IFO554068-BD1999

Hard Seat with Lid - Blue

IFO554112-BD1999

Hard Seat with Lid - Grey

IFO724D55999

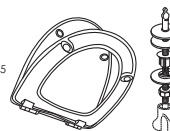
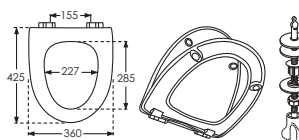
Hard Seat - Fixed Hinges - White

IFO99565

Soft Seat - White

IFO99579

Hard Seat - Fixed Hinge - Black



## Ifö — Fresh Toilet Sticks

IFO94568

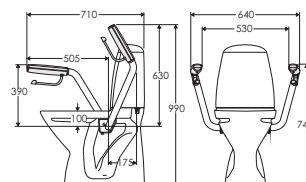
Ifö Fresh Sticks - 10 packets of 5 sticks (50 Total)



## Ifö Arm Supports and Fixing Kit (Suits Ifö Sign 6861 and 6872 Models Only)

IFO98125

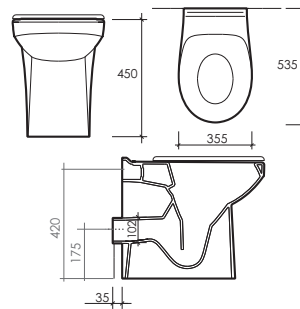
Arm Supports - incl. dual toilet roll holders



### Twyford Avalon Rimless Back to Wall Increased Height Toilet Pan

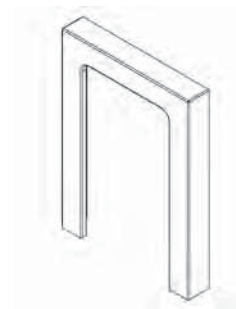
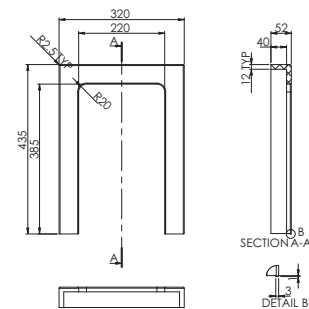
TWY-AV1968WH

Pan only - Seat sold separately



### Twyford Sola Rimless WC Pan Infill

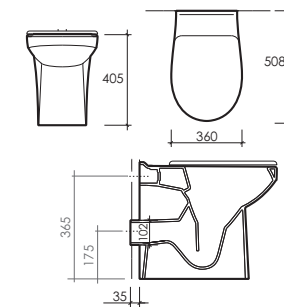
TWY-INF52WH



### Twyford Sola Rimless Back to Wall Toilet Pan

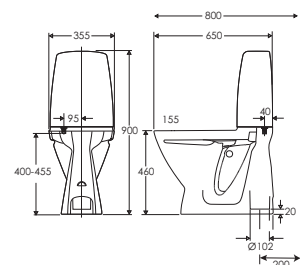
TWY-SA1968WH

Pan only - Seat sold separately



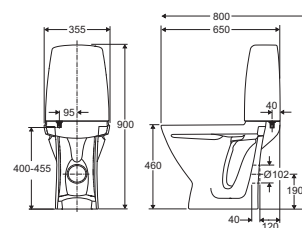
### Ifö Toilet Kit - AS1428.1-2009 Set Up — S Trap

CARE6861



### Ifö Toilet Kit — AS1428.1-2009 Set Up — P Trap

CARE6872



# accessible toilet solutions

**The Carekit™ range provides complete accessible toilets solutions which comply with AS1428.1-2009.**

We have combined the necessary elements for an accessible public facility into kits for ease of ordering and to eliminate the trouble of ordering separate items from various suppliers running the risk of non-compliance.

Each of the Carekit™ elements are designed to address the Premises Standard requirements. The hard work has been done for you with the promise that they will satisfy AS1428.1-2009. We have grouped the products into eight different kits offering S or P trap toilets and right or left wash basin shelf space as well as a selection of thermostatic mixers and non-thermostatic tapware.



TOILET



GRAB RAILS



BASIN



TAP





## AS1428.1-2009 accessible toilet Carekit™

### Carekit™ — 100 SERIES

#### CONTENTS:

- Ifö freestanding increased height toilet
- Pressalit Sign toilet seat in Anthracite Grey with lid
- Ifö Sign basin 600
- Enware-Oras Viva mixer with extended handle
- Angled grab rails - stainless steel

#### Order Code:

**CARE101P - P Trap Toilet**

**CARE101S - S Trap Toilet**

#### Variations available:

Upgrade tap to Enware-Oras Viva battery operated sensor tap.

**CARE102S - S Trap**

**CARE102P - P Trap**



### Carekit™ — 300 SERIES

#### CONTENTS:

- Ifö freestanding increased height toilet
- Pressalit Sign toilet seat in Anthracite Grey with lid
- Ifö Sign basin 600
- Enware-Oras Viva mixer with extended handle
- Aquablend 1500 Thermostatic Mixing Valve
- Angled grab rails — stainless steel

#### Order Code:

**CARE301P - P Trap Toilet**

**CARE301S - S Trap Toilet**

#### Variations available:

Upgrade tap to Enmatic Viva battery operated sensor tap.

**CARE302S - S Trap**

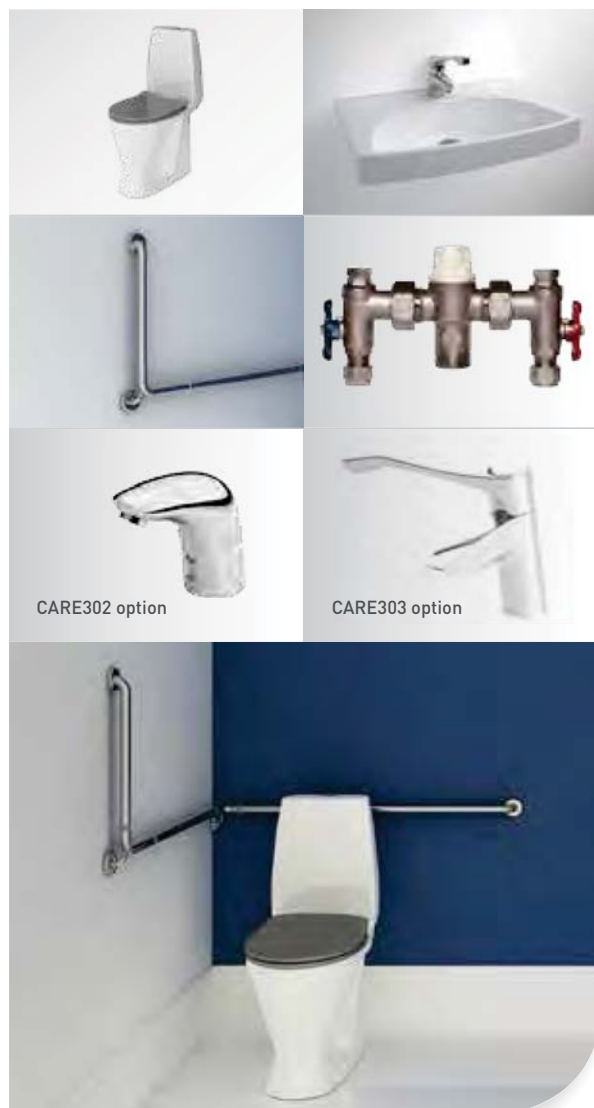
**CARE302P - P Trap**

#### Variations available:

Upgrade tap to Aquablend SQX Sequential Thermostatic Mixer with extended handle (this replaces the need for a separate in-wall thermostatic mixing valve).

**CARE303S - S Trap**

**CARE303P - P Trap**



## Carekit™ — 500 SERIES

### CONTENTS:

- Ifö freestanding increased height toilet
- Pressalit Sign toilet seat in Anthracite Grey with lid
- Ifö Sign basin 770 vitreous china basin with shelf
- Enware-Oras Viva mixer with extended handle
- Aquablend 1500 Thermostatic Mixing Valve
- Angled grab rails — white powder coated stainless steel

#### Order Code:

**CARE501PL** - P Trap Toilet, Right Shelf (Left Bowl) Basin

**CARE501PR** - P Trap Toilet Left Shelf (Right Bowl) Basin

**CARE501SL** - S Trap Toilet Right Shelf (Left Bowl) Basin

**CARE501SR** - S Trap Toilet Left Shelf (Right Bowl) Basin

#### Variations available:

Upgrade tap to Enmatic Vega battery operated sensor tap

**CARE502PL** - P Trap Toilet, Right Shelf (Left Bowl) Basin

**CARE502PR** - P Trap Toilet Left Shelf (Right Bowl) Basin

**CARE502SL** - S Trap Toilet Right Shelf (Left Bowl) Basin

**CARE502SR** - S Trap Toilet Left Shelf (Right Bowl) Basin

Upgrade tap to Aquablend SQX Sequential Thermostatic Mixer with extended handle. (this replaces the need for a separate in-wall thermostatic mixing valve).

**CARE503PL** - P Trap Toilet, Right Shelf (Left Bowl) Basin

**CARE503PR** - P Trap Toilet Left Shelf (Right Bowl) Basin

**CARE503SL** - S Trap Toilet Right Shelf (Left Bowl) Basin

**CARE503SR** - S Trap Toilet Left Shelf (Right Bowl) Basin



## sample room configuration

### SAMPLE ACCESSIBLE TOILET LAYOUT

In accessible toilets the circulation space is a critical factor as is providing compliant components to be installed at the required heights.

The complex process of creating a compliant accessible toilet is detailed in the Australian Standard AS1428.1-2009.

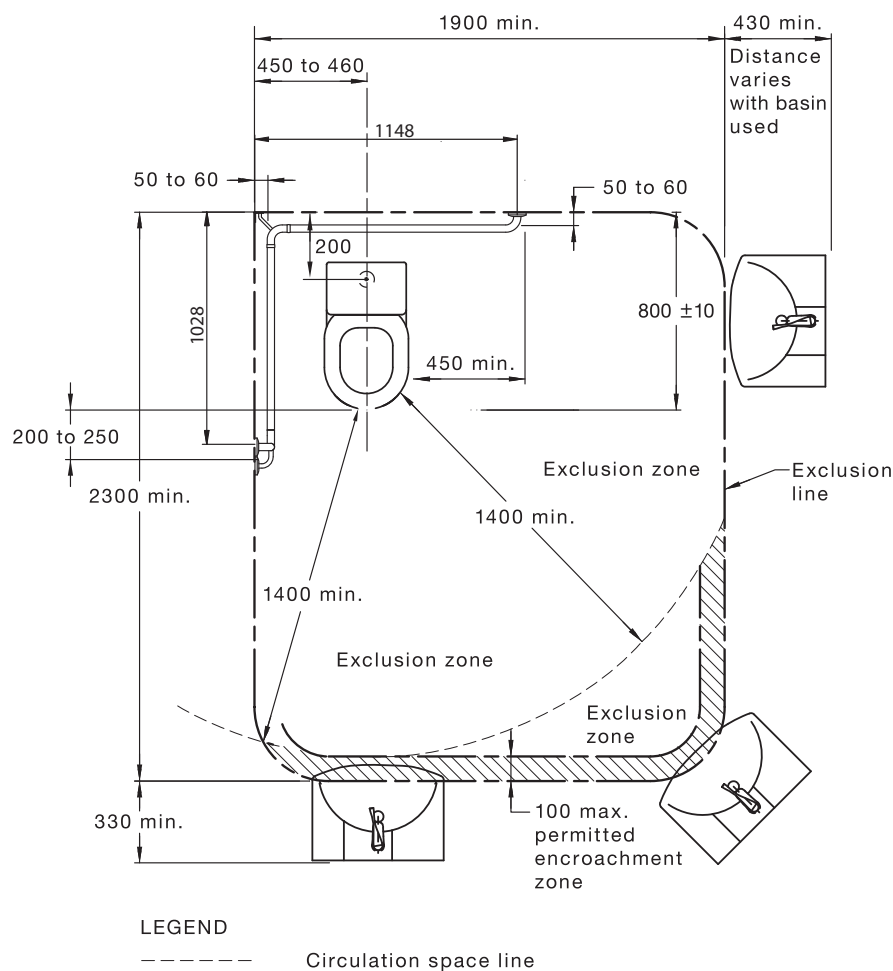
Advice from respected Access Consultants throughout Australia indicates that the Carekit™ range complies with AS1428.1-2009.

Here is a sample room drawing to be used as a guide only.

Please refer to AS1428.1-2009 and 2010 amendments for detailed requirements and measurements.

A comprehensive installation guide is supplied with all Carekits.

Important: This information is provided as a guide only and is based on AS1428.1-2009. Independent design assessment and approval by an appropriately qualified consultant is required to ensure compliance with standards and building code requirements.



## IFO FREESTANDING INCREASED HEIGHT TOILET

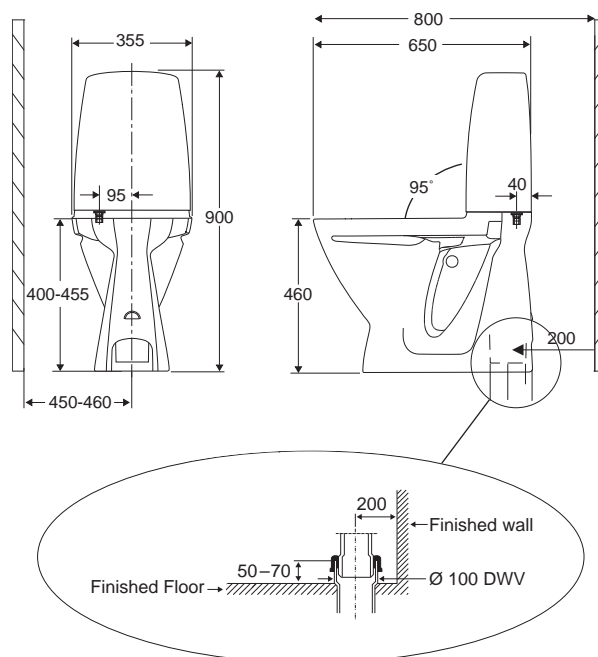
The foundation of the kits is the Ifö increased height toilet.

### FEATURES:

- Freestanding WC
- Raised height flush button
- 95° cistern to pan angle
- Integrated cistern complies on a deemed-to-satisfy basis and serves as a backrest "on" the accessible toilet as required in AS1428.1-2009 and 2010 amendments
- Cistern complies with all angles thrust test of 1100N for backrest requirements
- Pan load rated to 400kg
- Seamless cistern offering back and side transfer support
- Allows for undisturbed coving seal
- Tested to comply with 90% of commonly used Australian shower commode chairs (including A90 wheelchair)
- Fully glazed inside rim to avoid bacteria growth
- WaterMark Certified AS1172
- WELS 4 star rated (4.5/3L Flush)

### TECHNICAL INFORMATION:

- 800mm finished wall to front of pan (based on 200mm off set)
- All pans are to be fixed using 316 stainless steel screws
- 460mm rim height, 480mm with seat



## PRESSALIT SIGN TOILET SEAT WITH LID

The Anthracite Grey toilet seat features commercial grade stainless steel hinges and buffers to combat lateral movement. Weight load rated to a maximum of 250kg.

The coloured seat provides luminance contrast against the pan to assist those with visual impairment and to meet the 30% luminance contrast requirement in AS1428.1-2009.

## BASINS

The two basin options are the main variation between the Carekit™ 100, 300 Series and 500 Series.

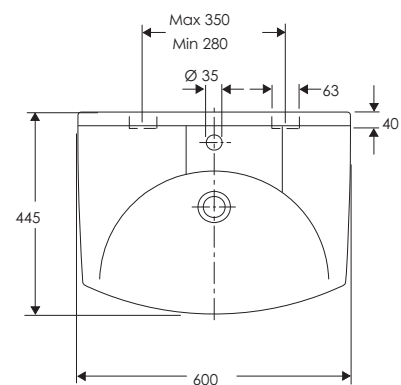
### IFO SIGN BASIN 600

#### FEATURES:

- 600mm long wall mounted vitreous china basin
- Fully glazed under and over preventing bacteria growth
- Reverse shape wash bowl increases user area
- Back to wall lip for protection
- Easy clean recessed tap and soap area

#### TECHNICAL INFORMATION:

- Plug and waste included (32mm)
- Supplied with mounting bolts



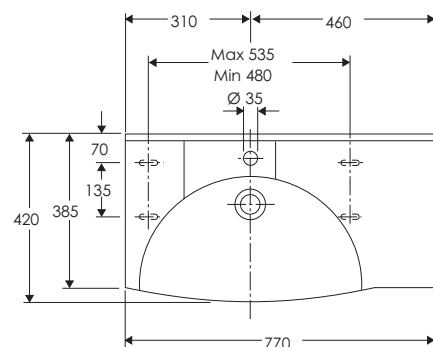
### IFO SIGN BASIN 770

#### FEATURES:

- 770mm long wall mounted vitreous china basin with shelf
- Eliminates the need for a shelf on the wall
- Right or left shelf space option
- Fully glazed under and over preventing bacteria growth
- Reverse shape wash bowl increases user area
- Back to wall lip for protection
- Easy clean recessed tap and soap area

#### TECHNICAL INFORMATION:

- Available in right or left configuration (Left hand Bowl shown on drawing opposite)
- Plug and waste included (32mm)



## GRAB RAILS

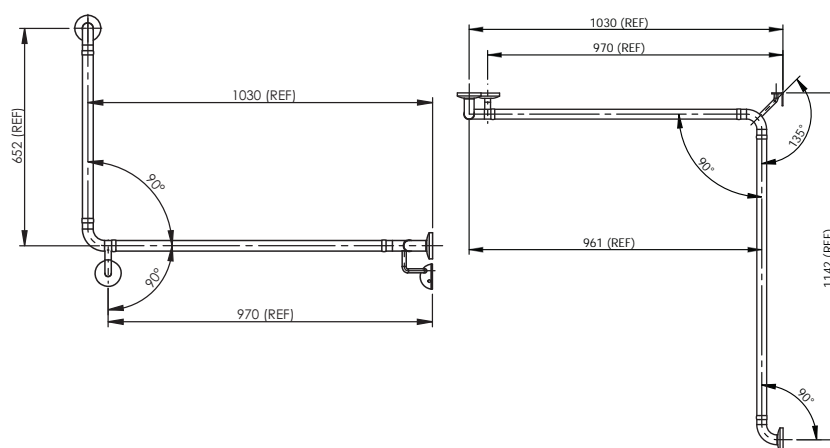
### ANGLED GRAB RAIL — WHITE POWDER COATED STAINLESS STEEL

#### FEATURES:

- No obstruction to the passage of the hand along the grab rail
- Flexible design allows installation for both right and left hand layouts
- Modern stylish look

#### TECHNICAL INFORMATION:

- Powder coated white
- 32mm diameter



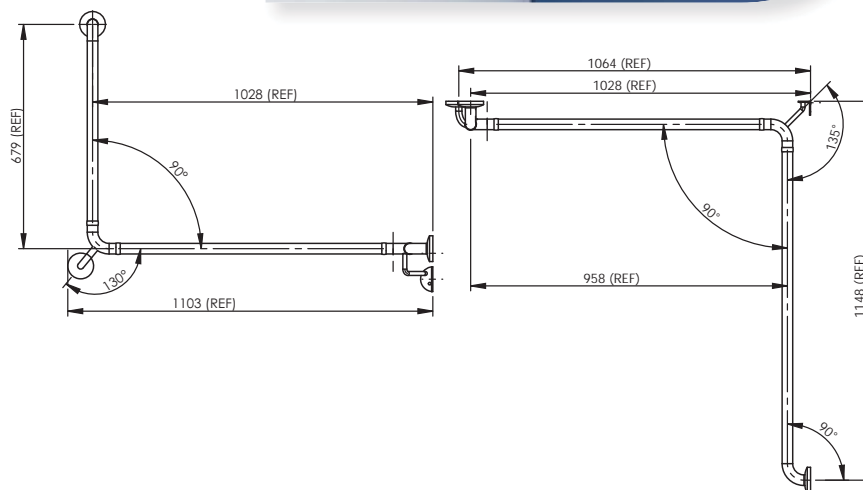
### ANGLED GRAB RAIL — STAINLESS STEEL

#### FEATURES:

- No obstruction to the passage of the hand along the grab rail
- Flexible design allows installation for both right and left hand layouts

#### TECHNICAL INFORMATION:

- Stainless steel finish
- 32mm diameter



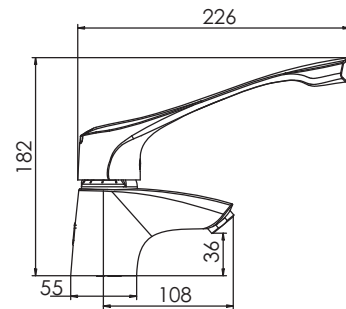
## TAPS

## ENWARE-ORAS VIVA MIXER WITH EXTENDED HANDLE

- Cartridge with metal connection improves mixer strength and vandal resistance
- Oversized colour indicators
- Integral mesh strainer
- Dual fixing points to help reduce risk of rotation
- Surface mount washer for sealing
- Concealed flow controlled aerator technology for a clean look
- WELS registered
- Chrome standard finish
- Flexible hose with reverse thread into mixer body
- Extended lever allows for easier operation from front of basin
- WaterMark Certified to AS/N253718
- 15 year warranty

## TECHNICAL INFORMATION:

- Inlet Connection: 15mm (½") BSP
- Min-Max Rated Static Pressure: 50-1000kPa
- Maximum Dynamic Pressure: 500kPa (AS/NZS3500)
- Operating Temperature Range: 0-80° C

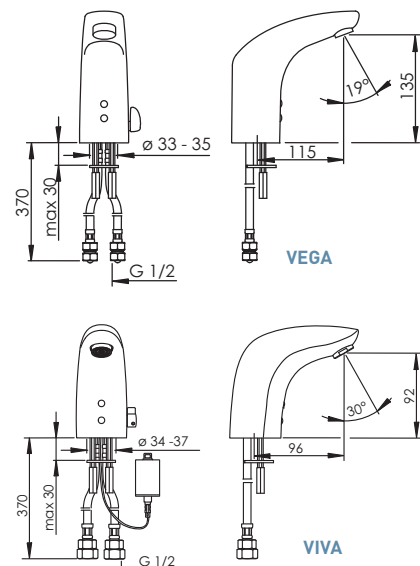


## ENMATIC VEGA AND VIVA SERIES SENSOR TAP WITH OPTIONAL TEMPERATURE ADJUSTER

- Auto-focus infrared sensing technology with triangulation for a more consistent, reliable operation
- Improved user friendliness with intelligent activation and after-flow technology
- Low power consumption
- Vandal resistant dual point fixings reduces the risk of rotation in vandal prone applications
- Electronics have IP67 rated protection against water and humidity
- Single temperature set-up supplied standard with mixing lever and extra inlet supplied for easy conversion for temperature adjustable control
- WELS 6 Star rated (5.4lpm)
- WaterMark Certified AS/N253718
- 2 year warranty

## TECHNICAL INFORMATION:

- Connection: 3/8" & 1/2" BSP Flexi Connector
- Recommended Working Pressure: 100-500kPa
- Maximum Operating Temperature: 70°C
- Sensor Range Technology: Optimally Preset using Auto-Focus Technology
- Battery Powered: 6V Lithium 2CR5 battery
- Protection Class: IP 67
- Max Flow Period: 2 Minutes



Enware thermostatic mixers and tapware must be installed in accordance with the provisions of AS/NZS3500. Installations not complying with AS/NZS3500 may void the product and performance warranty provisions.

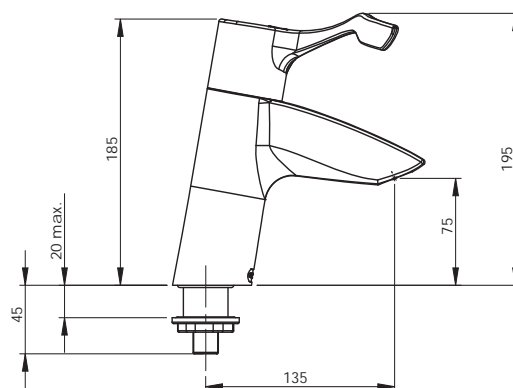


## AQUABLEND SQX THERMOSTATIC BASIN MIXER WITH EXTENDED LEVER HANDLE

- Provides personal temperature control at 'Point of Use'
- WaterMark Certified to AS4032:1
- NSW Health approved
- Cool to touch & non-conductive mixer body
- Colour indication on handle for easy identification
- Easy to clean design
- Serviceable in-situ
- Fixed spout
- Self draining spout design
- Australian designed and manufactured
- Extended lever allows for easier operation from front of basin
- 5 year warranty

### TECHNICAL INFORMATION:

- Hot Temperature Supply Range: 55°C - 85°C
- Cold Temperature Supply Range: 5°C - 25°C
- Adjustable Temperature: 35°C - 46°C
- Operating Working Pressure: 20 - 500\*kPa
- Maximum Outlet Pressure in accordance with AS/NZ3500: 500kPa
- For optimum temperature stability it is recommended that the inlet pressures be balanced to within +/-10%

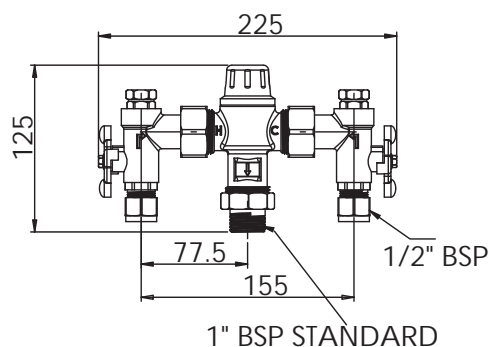


## AQUABLEND 1500 THERMOSTATIC MIXING VALVE

- WaterMark Certified to AS4032.1
- Scald and thermal shock protection with rapid thermal shut-off should either the cold or hot water supply fail
- Highly responsive temperature control, maintaining outlet temperature within +/- 2°C under changing inlet temperature and pressure conditions
- Aquablend's design delivers excellent flow, operating at a minimum pressure of 20kPa
- Supplied complete with isolating valves, non-return valves and dual stage strainers incorporating temperature/pressure test ports
- Flexible installation — inlet and outlet connections may be rotated to suit pipework design
- 5 year warranty

### TECHNICAL INFORMATION:

- Temperature Adjustment Range: 35° to 48°C
- Dynamic Inlet Pressures: 20kPa Min – 500kPa Max
- Static Inlet Pressure: 1000kPa Max
- Flow Rates: 42lpm@300kPa pressure loss
- Minimum Flow Rate for Stable Outlet Temperature: 4 litres/min
- For optimum temperature stability it is recommended that the inlet pressures be balanced to within +/-10%



Enware thermostatic mixers and tapware must be installed in accordance with the provisions of AS/NZS3500. Installations not complying with AS/NZS3500 may void the product and performance warranty provisions.

Product details in this guide are indicative only and may change without notice.

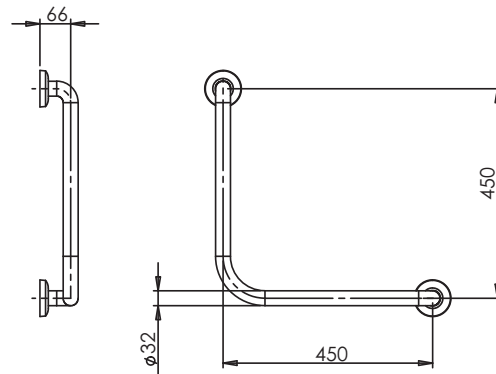
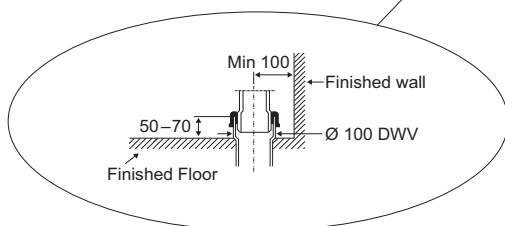
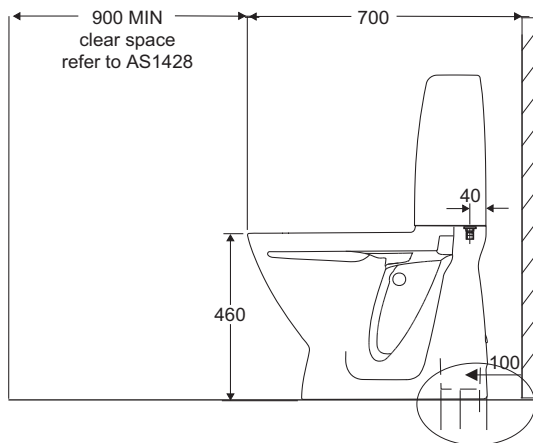
## AS1428.1-2009 accessible ambulant toilet Carekit™

Enware's Ambulant Carekit™ provides assistance to people with restricted mobility and complies with the ambulant requirements as outlined in AS1428.1-2009.

- The freestanding Ifö toilet has an increased height for easier use and includes raised height flush buttons
- The environmentally friendly WC is dual flush with a 4 Star WELS water efficiency rating
- Pressalit Sign toilet seat in Anthracite Grey with lid provides luminance contrast against the pan to assist those with visual impairment
- The heavy duty seat withstands the rigours of installation in public amenities with a 250kg weight load rating
- Each pair of "L" shaped angled grab rail configuration is made from 32mm stainless steel

Order Code:

**CAREAMBS**



## ifo increased height toilet kit

This toilet suite helps make it easier for elderly and people with a disability. Packaged to also meet the AS1428 requirements the kit includes a raised height pan with raised flush buttons and a specialist seat with stainless steel hinges and sideways buffers for enhanced safety. The flat profile makes it easier for wheel chair transfers and the anthracite grey colour that meets the luminance requirements of AS1428.

### FEATURES:

- 460mm seat height (480mm including Care Toilet Seat)\*
- 800mm finished wall to front of pan (based on 200mm off seat)
- 95° cistern to pan angle
- Cistern complies with all angles thrust test (for AS1428.1:2009) of 1100 N for backrest requirements
- Pan load rated to 400kg
- Seamless cistern offering back and side transfer support
- Increased foot print for enhanced stability
- Allows for undisturbed coving seal
- Tested to comply with 90% of commonly used Australian shower commode chairs
- WELS 4 star rated (4.5/3L Flush)
- Fully glazed on back and inside rim to avoid bacteria growth
- Patented Fresh WC blue stick technology enabled for increased infection control
- All pans are to be fixed using high grade based anti-bacterial silicone of appropriate colour and where exposed mounting holes are provided, 316 stainless steel screws are to be used
- Provides 100% consistency and reliability as combined wc and back support — no additional backrest needed to meet requirements of AS1428.1:2009\*\*
- Raised flush buttons

\*Technical information available from the website

\*\*Refer to AS1428.1-2009 for height and spacial requirements

### Order Code:

**CARE6861 IFO - Toilet AS1428.2009 Setup - S Trap**

### Also available:

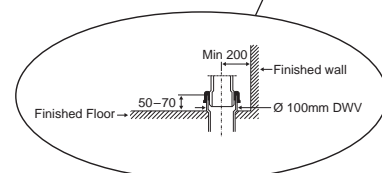
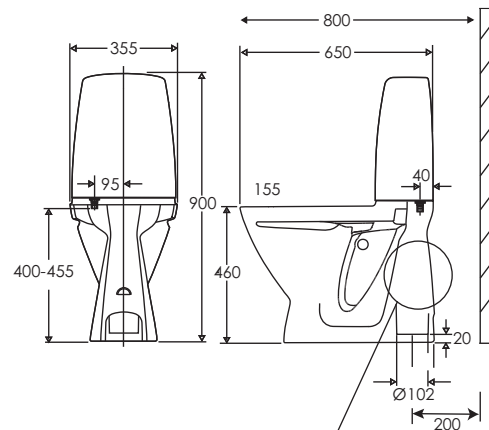
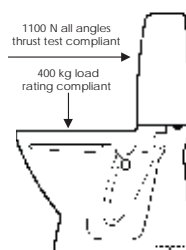
**CARE6872 IFO - Toilet AS1428 2009 Setup - P Trap**

### Options:

- **IF098015 - Floor Anchor**
- **IF094669 Fresh Sticks - 10 packets of 5 sticks**

## technical information

Inlet Connection	¾" O.D compression fitting
Waste Elbow Outlet	1-¼ O.D tube
Minimum Supply Line Size	½" with 200-500kPa flow pressure
Waste Water Outlet Size	40mm



Enware tapware must be installed in accordance with the provisions of AS/NZS3500 and any relevant local regulations. Installations not complying with AS/NZS3500 may void the product and performance warranty provisions.

## junior toilet pan

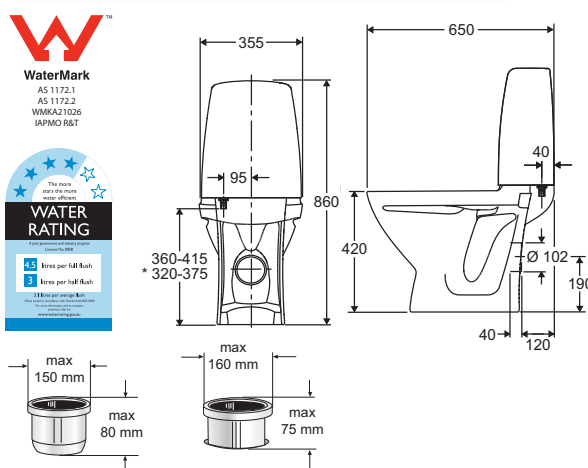
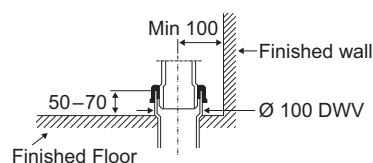
One-piece free standing junior toilet. Suitable for child care or infant school applications.

### FEATURES:

- Seamless cistern for added infection control
- Supplied with a dedicated toilet seat
- AS1428.1 Part 3 compliant
- Ergonomically designed to suit young children between 3 & 6 years old
- Finished installed height including seat = 315mm
- Cistern bolted onto pan for enhanced back support
- Fully glazed on back and inside rim to avoid bacteria growth
- Patented Fresh WC blue stick technology enabled for increased infection control
- All pans are to be fixed using high grade anti-bacterial silicone

#### Order Code:

**IF06820 - IF0 Sign Low Height Toilet - S Trap**



## bariatric toilet pan

A unique design of floor standing toilet pan, which is dedicated to assist bariatric users (150kg + or Body Mass Index of 40+). Supplied in P trap and an option for S trap conversion. This pan has dual access panels on both left & right sides, and is finished in high gloss paint. Overall dimensions of this Enware pan ensure that a bariatric commode chair can be placed over it without obstruction. Orientated for placement in hospitals, specialist clinics and nursing homes.

### FEATURES:

- 304 Grade stainless steel construction weight tested to 900kg
- Seamless one piece smooth bore trap & bend
- 100mm P trap outlet suitable for a standard pan collar
- S trap conversion (set out 100-230mm from finished wall)
- Comfortable heavy duty toilet seat designed for bariatric users
- Substantial pan footprint ensures stability
- Mimics the design overlay of AS1428.1 for WC pans
- Works with a wide range of inwall concealed flushing systems including Enware, Geberit and Valsir

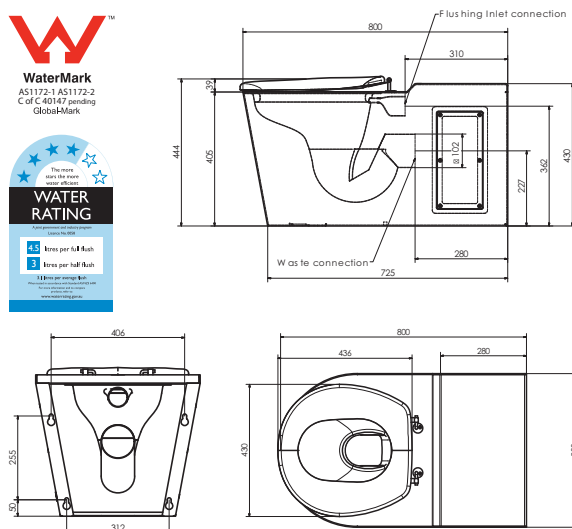
#### Order Code:

**EWS505B - White Bariatric WC Pan and Toilet Seat (no lid)**

#### Options:

**WC Touch Activated Dual Flush (front access) EMF411M-4**

**WC Touch Activated Dual Flush (duct access) EMF410M-4**



## twyford rimless raised height wc pan and infill

A back to wall pan with an elevated height to suit health and aged care applications. The hygienic rimless design is easy to clean minimising crevasses and potential bacterial growth.

### FEATURES:

- Load tested to 400kg
- Rimless bowl
- Compact BTW P-trap design
- Tested with flushing systems to ensure best performance
- Water saving with WELS 4 star rated (3/4.5L)

This infill allows the Twyford Avalon Rimless back to wall WC pan to be installed when the set out of the pan needs to meet AS1428.1 (i.e. 800mm  $\pm$  10mm). The infill fits discretely behind the pan to give a practical design feature in order to achieve compliance.

### FEATURES:

- Simple to install
- Eliminate the need for multiple trades
- Can be trimmed on site to accommodate building tolerances
- Easily removed to give access for toilet pan and pipe work
- Constructed of strong moulded ABS
- Finished in brilliant white

#### Order Code:

**CARE610** - Twyford Avalon Rimless WC Pan with Infill - excluding Toilet Seat

#### Seat Options - Order separately:

**EP-R37000B90** - Dania "White" Toilet Seat with Lid

**EP-R27000B90** - Dania "White" Toilet Seat without Lid

**EP-R37112B90** - Dania "Anthracite Grey" Toilet Seat with Lid

**EP-R27112B90** - Dania "Anthracite Grey" Toilet Seat without Lid

#### Flushing Options:

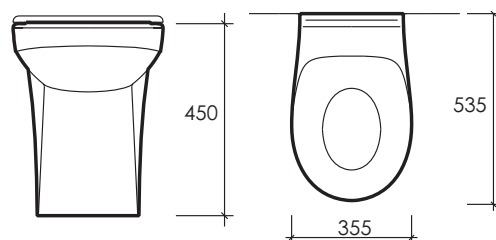
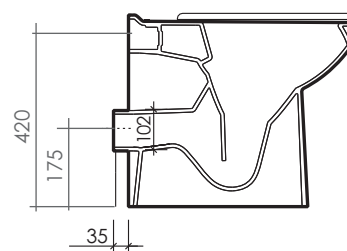
**EMF411M-4** - WC Touch Activated Dual Flush (front access)

**EMF410M-4** - WC Touch Activated Dual Flush (duct access)



Twyford rimless raised height pan with an infill to meet AS1428 positional requirements.

*Note: Seat not included see options. pictured here with Dania "anthracite grey" toilet seat with lid EP-R37112B90*



## toilet pan infills

When wall faced pans are positioned to accommodate the needs of elderly or as1428.1-2009 — amdt 2010 disabled applications, we can offer an effective infill section which conceals the unsightly gap between pan and wall.

### FEATURES:

- Simple to install
- Eliminate the need for multiple trades
- Can be trimmed on site to accommodate building tolerances
- Low cost alternative to traditional methods
- Easily removed to give access for toilet pan and pipe work

### TWYFORD RIMLESS DISABLED WC PAN INFILL

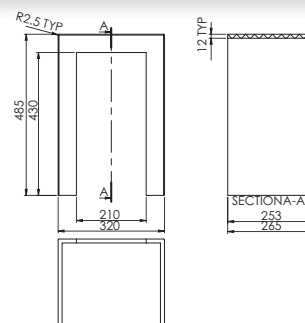
This infill allows the Twyford Avalon Rimless back to wall WC pan to be installed when the set out of the pan needs to meet AS1428.1 (i.e. 800mm ± 10mm). The infill fits discretely behind the pan to give a practical design feature in order to achieve compliance.

### FEATURES:

- Simple to install
- Eliminate the need for multiple trades
- Can be trimmed on site to accommodate building tolerances
- Easily removed to give access for toilet pan and pipe work
- Constructed of strong moulded ABS
- Finished in brilliant white
- Designed to work with the back to wall Twyford Avalon Pan

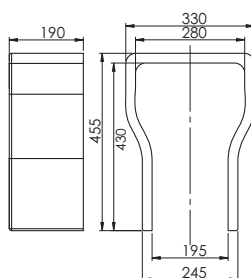
Order Code:

**TWY-INF265WH** - Twyford Sola Rimless WC Pan Infill



### TOILET PAN INFILL - ABS

Made of a strong moulded ABS construction finished in brilliant white. This hygienic solution is an upmarket alternative to the traditionally used joinery detail. Suitable for use with the Caroma Care Leda 2000 only.



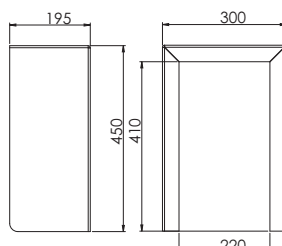
Order Code:

**CD205** - Toilet Pan Infill - ABS



### TOILET PAN INFILL - COMPOSITE

Made of a tough 6mm white-faced composite material, this economical solution works with the Caroma Care Leda 2000 only.



Order Code:

**CD333** - Toilet Pan Infill - Composite



### RELATED PRODUCTS

Toilet Pans — Page 341, Single Lever Tapware — Page 127, Electronic Touch Button and Sensor Tapware — Page 239, Aquablend SQX Thermostatic Mixers — Page 260, Basins — Page 330, Grab Rails — Page 224



### Accessible Care Kit — 100 Series

CARE101P	P-Trap Pan — Extended Handle Mixer Tap and Sign 600 Basin
CARE101S	S-Trap Pan — Extended Handle Mixer Tap and Sign 600 Basin



### Accessible Care Kit — 100 Series

CARE102P	P-Trap Pan — Hands-free Sensor Tap and Sign 600 Basin
CARE102S	S-Trap Pan — Hands-free Sensor Tap and Sign 600 Basin



### Accessible Care Kit — 300 Series

CARE301P	P-Trap Pan - Extended Handle Mixer Tap and Sign 600 Basin with Aquablend 1500 TMV
CARE301S	S-Trap Pan - Extended Handle Mixer Tap and Sign 600 Basin with Aquablend 1500 TMV



### Accessible Care Kit — 300 Series

CARE302P	P-Trap Pan — Hands Free Sensor Tap and Sign 600 Basin with Aquablend 1500 TMV
CARE302S	S-Trap Pan — Hands Free Sensor Tap and Sign 600 Basin with Aquablend 1500 TMV



### Accessible Care Kit — 300 Series

CARE303P	P-Trap Pan with Aquablend SQX Thermostatic Mixer and Sign 600 Basin
CARE303S	S-Trap Pan with Aquablend SQX Thermostatic Mixer and Sign 600 Basin





**Accessible Care Kit — 500 Series**

CARE501PL	P-Trap Pan - Sign 770 Left Shelf Basin — Extended Handle Mixer Tap and Aquablend 1500 TMV
CARE501PR	P-Trap Pan - Sign 770 Right Shelf Basin — Extended Handle Mixer Tap and Aquablend 1500 TMV
CARE501SL	S-Trap Pan - Sign 770 Left Shelf Basin — Extended Handle Mixer Tap and Aquablend 1500 TMV
CARE501SR	S-Trap Pan - Sign 770 Right Shelf Basin — Extended Handle Mixer Tap and Aquablend 1500 TMV

**Accessible Care Kit — 500 Series**

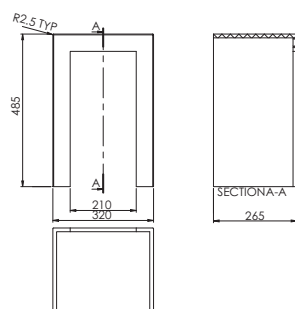
CARE502PL	P-Trap Pan - Sign 770 Left Shelf Basin — Hands Free Sensor Tap and Aquablend 1500 TMV
CARE502PR	P-Trap Pan - Sign 770 Right Shelf Basin — Hands Free Sensor Tap and Aquablend 1500 TMV
CARE502SL	S-Trap Pan - Sign 770 Left Shelf Basin — Hands Free Sensor Tap and Aquablend 1500 TMV
CARE502SR	S-Trap Pan - Sign 770 Right Shelf Basin — Hands Free Sensor Tap and Aquablend 1500 TMV

**Accessible Care Kit — 500 Series**

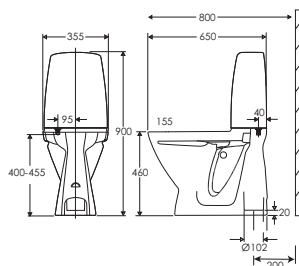
CARE503PL	P-Trap Pan - Sign 770 Left Shelf Basin — Aquablend SQX Thermostatic Mixer
CARE503PR	P-Trap Pan - Sign 770 Right Shelf Basin — Aquablend SQX Thermostatic Mixer
CARE503SL	S-Trap Pan - Sign 770 Left Shelf Basin — Aquablend SQX Thermostatic Mixer
CARE503SR	S-Trap Pan - Sign 770 Right Shelf Basin — Aquablend SQX Thermostatic Mixer

**Twyford Avalon Rimless Disabled WC Pan and Infill**

CARE610	With Double Flap Anthracite Grey Toilet Seat
---------	---

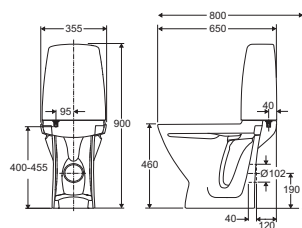
**Ifö Toilet Kit — AS1428.1-2009 Set Up — S Trap**

CARE6861
----------



## Ifö Toilet Kit — AS1428.1-2009 Set Up — P Trap

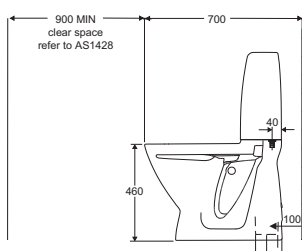
CARE6872



## Accessible Ambulant CareKit

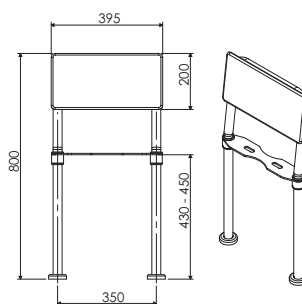
CAREAMBS

Ifö increased height toilet suite with raised flush buttons, grey toilet seat and 2x right angle grab rails



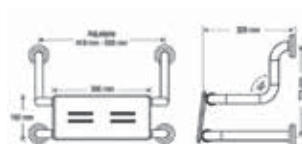
## Backrest — Floor Mounted Satin Stainless Steel

CD-BR395



## Backrest — Wall Mounted Satin Stainless Steel

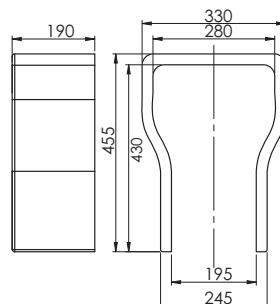
CD-BR400



## Disabled Toilet Pan Infill — ABS

CD205

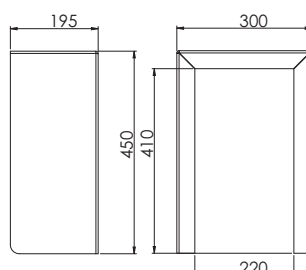
Suitable for Caroma Care Leda 2000



## Disabled Toilet Pan Infill — Composite

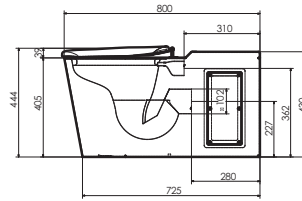
CD333

Suitable for Caroma Care Leda 2000

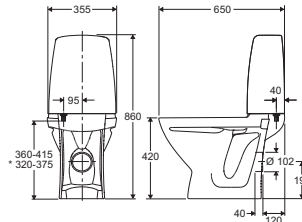


**White Bariatric Toilet Pan with Seat (no lid)**

EWS505B

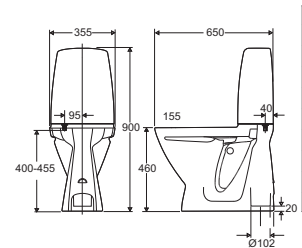
**Ifö Sign Junior WC — S Trap**

IFO6820

**Ifö Sign Toilet Increased Height**

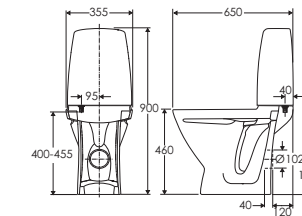
IFO6861

S Trap (seat sold separately)

**Ifö Sign Toilet Increased Height**

IFO6872

P Trap (seat sold separately)

**Ifö — Fresh Toilet Sticks**

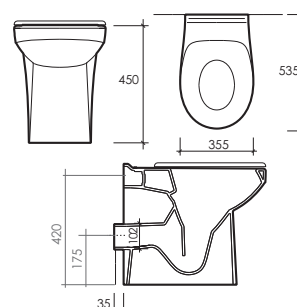
IFO94568

Ifö Fresh Sticks — 10 packets of 5 sticks (50 Total)

**Twyford Avalon Rimless Back to Wall Increased Height Toilet Pan**

TWY-AV1968WH

Pan only — Seat sold separately



## Twyford Rimless Disabled WC Pan Infill

TWY-INF265WH

Pan only - Seat sold separately

