



aged care and disability design solutions

TOILETING, WASHING, SHOWERING
SOLUTIONS TO FIT THE USER AND
THEIR ENVIRONMENT


installing**confidence**



As industry leaders our knowledge and insight allows us to provide innovative solutions that continue to meet the ever changing needs of residents, patients and their carers.

We understand the needs of Aged Care, Young Care and Independent Living Facilities. Our solutions ensure independence, dignity, safety and comfort.

We offer advice and direction from product suitability through to installation, working within WHS and OH&S regulations and compliance with relevant Australian Standards and Guidelines.

Enware fit the solution to the **user** and **their** environment - we focus on ...

Patients and residents wants and needs

Supplying products that are easy to use for the carer

Solutions that will work for the location and facility



Enware has extensive experience in the
Aged Care and Disability markets.

We have completed over 200 projects
in partnership with some of Australia's
leading aged care operators, health
facilities, architects, government
and construction developers.

Our range covers specialty tapware and sanitary ware solutions as well as adaptable bathroom and living systems. Providing solutions that cater for differing needs.

Users want a safe and quality product solution they can feel confident using. Our products offer the ability to be as independent as possible and the flexibility to adapt to changing needs. Our high quality design and innovation means style doesn't have to be traded for safety and comfort.

Carers want products that minimise physical strain and make work routine easier to manage. A selection of

our products can be easily adjusted and can be moved quickly according to the carers needs.

Facility owners want systems that are flexible, functional and have life time value without compromising on design. They want to know that the living and working environment can be tailored to user and carer needs within local regulations and standards, along with product solutions that eliminate the need for renovations should needs change.

**Knowing we put the user first means
you can choose Enware with confidence.**



Resident Dignity and Safety First

Our solutions provide health care professionals with quality equipment to best assist people through the twilight years. From easy to use taps to bacteria risk minimisation in plumbing systems.



Choose Quality

Our range of sanitary ware includes fully glazed porcelain basins for greater infection control. Pressalit Care helps to provide independence, dignity, flexibility, safety and comfort in the bathroom with adaptable options for changing needs.



System Solutions

Enware's long experience in integrating with plumbing design, allows us to work closely with hydraulic designers to help minimise risks such as Legionella and Pseudomonas Infection.



Standards Compliance

Our products are tested and approved to Australian and relevant International Standards.

WELS Registered

All relevant Enware products are WELS registered and labelled with their water efficiency.



Operations and Sustainability

Our fit for purpose range is designed to meet the demands of Aged Care and Disability environments. Our use of technology provides various levels of water and energy savings and assist with green building targets.



Service and Support

Our team has an abundance of knowledge and experience to assist with initial site assessments through to checking performance and maintenance procedures. Our national technical service team of accredited plumbers can provide installation and on-site training.



Types of Care	06	Assisted Bathroom	22
Our Products	09	Hand Wash Station	24
		Hand Wash Station Kits	28
High Dependency		Cleaners Room	30
Option 1	10	Utility/Laundry Room	32
Option 2	12	Kitchen/Kitchenette	34
Option 3	14	Public/Accessible/ Staff Bathrooms	
		& Showers	36
Dementia Mental Health		Barrier Free Drinking Fountains	42
Option 1	16	Changing Places	44
Option 2	18	Specialty Products	46
		Pressalit Care Range	50
General Care	20	Indivo Height Adjustable Kitchens	54
		Frequently Asked Questions	60
		Index	66



TYPES OF CARE

HIGH DEPENDENCY UNIT (HDU)

A patient who requires a higher nurse to patient ratio. Generally this is one nurse to two high dependency patients.

[High Care Nursing Homes](#) are residential aged care facilities offering high level care for people who require a lot of assistance with daily living activities such as feeding, dressing, washing and mobility. Previously known as 'nursing home care' High Care is provided to people assessed by Aged Care Assessment Teams (ACAT) as requiring almost complete assistance. They include accommodation, meals, laundry, cleaning and personal care and nursing staff to manage medical needs.

[Residential Aged Care](#) is for older people who can no longer live at home. Reasons can include illness, disability, bereavement, an emergency, changing circumstances for their carer, family or friends, or because it is no longer possible to manage at home without help.



DEMENTIA CARE

Dementia Mental Health facilities have residential care areas that cater for residents with dementia or similar behavioural related conditions in an environment that is not a secure dementia specific unit or wing. Dementia residents need their en-suites to be made as user friendly and warm as possible to help stimulate the resident and put them at ease.

GENERAL CARE

Previously known as 'hostel care', this is provided for ACAT (or ACAS for Vic only) assessed people who require accommodation, meals, laundry, room cleaning as well as help with personal care and possibly nursing care.

Secure Dementia Care facilities have a fully secure dementia care unit or wing exclusively and specifically for people with dementia or similar behavioural related conditions.



OUR PRODUCTS

Enware is **committed** to ensuring critical living hubs like bathrooms and kitchens are designed to include fixtures and fittings that provide assistance to **provide well-being for users and their carers**. Our products can be fully adaptable, deliver the flexibility needed to maximise independence, in aged care, healthcare, accessible public washrooms or self-care environments. The benefits they deliver significantly contribute to an **increase in dignity, safety and user comfort**.

TAPWARE

We have an extensive range of adaptable and functional tapware solutions suited to people with minor difficulties through to the more specialised needs of users with a disability. These include, “touch free” electronic, 3-piece capstan and lever sets, extended lever, single lever mixers along with a variety of water efficient outlets.

BASINS

Our basins and furniture are specifically designed to deliver elegant yet functional solutions to balance user needs with aesthetics and hygiene in mind. These solutions deliver fully glazed surfaces that minimise bacteria growth, are easy to clean and highly resistant to wear. Increased vanity area is achieved with our reverse shape bowls, and the back to wall lip design assists against water spillage onto surrounding surfaces.

TOILETING

Our toileting solutions are designed to meet the specialised needs of those with a disability. The range, selected from world leading European brands, provide compliance with public accessible design requirements, whilst ensuring increased independence, dignity, and comfort for the user and/or their carer.

SHOWERING

Our range of showering solutions deliver comfort and safety for both users and carers in this specialised area. The range includes a variety of water efficient shower heads, adjustable shower head holders and grab rails in both stainless steel and chrome plated finishes to suit the specialised needs of aged care, health care and for those with a disability.

SUPPORT ARMS

Our support arm solutions are available for either on-toilet or on-wall installation - these specialised products deliver unique ergonomic design, easy to clean surfaces, are nurse call adaptable and weight load certified for user comfort and safety.

CAREKITS™

The Carekit™ range provides complete accessible bathroom solutions which comply with AS1428.1-2009 and 2010 amendments and the Building Code of Australia, on a ‘deemed to satisfy’ basis for builders, architects, designers, facility managers and those with the responsibility to meet the provisions of the Premises Standard.

BARRIER FREE DRINKING FOUNTAINS

Disability friendly drinking fountains ease the difficulty associated with accessibility. The range of barrier free, stainless steel drinking fountains have a contemporary design and accommodate both wheel chair and pedestrian access. The fountains project outwards allowing wheelchair access for people with a disability alleviating the problem of drinking facilities that are too high.

NURSING BENCHES AND CHANGE TABLES

Nursing benches are essential in the care of people with disabilities. We have a selection of convenient adjustable nursing benches that can be electronically raised and lowered to appropriate heights for various activities involving the care of people with disabilities.

ADJUSTABLE HEIGHT KITCHENS

Our adjustable height mechanisms have been designed with a focus on the varying needs of users and carers. In the adjustable height working environment, standing and seated users (including wheelchair users) can work concurrently comfortably and safely. Adjustable height solutions provide the added advantage that users can participate in working and other joint activities irrespective of differences in mobility and physical ability.

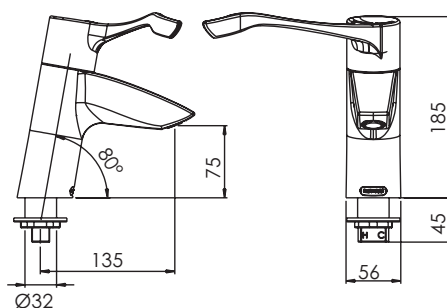


HIGH DEPENDENCY OPTION 1

A bathroom arrangement that allows flexible seating and grab rail provision in the shower, support around the toilet and a round contoured washbasin. Featuring thermostatically controlled at point of use tapware ensuring constant temperature and comfort for the user at all times.

AQUABLEND SQX THERMOSTATIC BASIN MIXER WITH EXTENDED LEVER HANDLE

Order Code: **ATM606D-4**



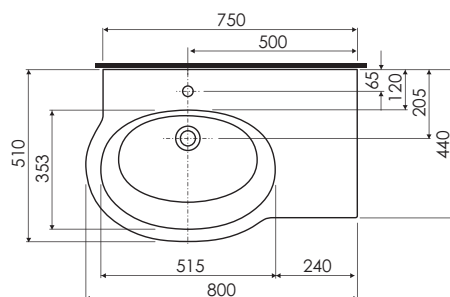
1

KOLO VARIUS BASIN

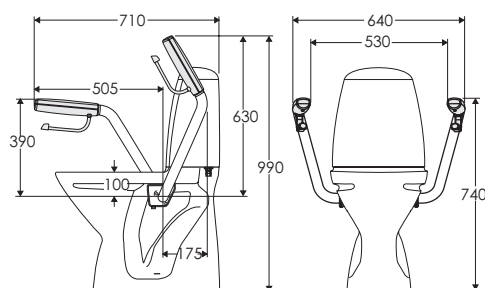
Order Code:

KOL31780T101 LEFT BOWL
(1 x tap hole + overflow)

KOL31781T101 RIGHT BOWL
(1 x tap hole + overflow)



2



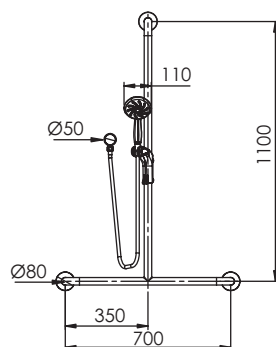
IFO INCREASED HEIGHT TOILET SUITE WITH SUPPORT ARMS - S TRAP

Includes Free Standing Ifo WC with
Double Flap Toilet Seat - Anthracite Grey,
Raised Flush Button and Support Arms*

* Support Arms can be ordered separately
Order Code: IFO98125

Order Code: **CARE601**

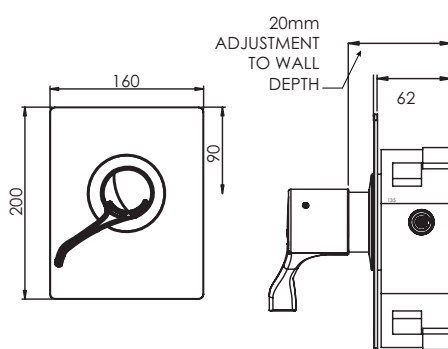
3



CHROME HAND HELD SHOWER WITH SMOOTH HOSE AND CENTRE INVERTED T STAINLESS STEEL GRAB RAIL

Order Code: **SGR027CT**

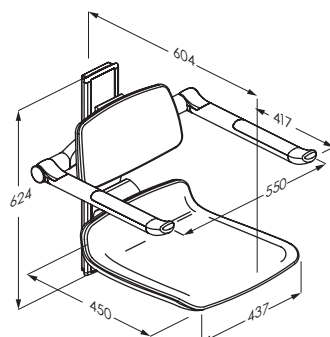
4



AQUABLEND SQX THERMOSTATIC SHOWER MIXER - RECESSED

Order Code: **ATM608L**

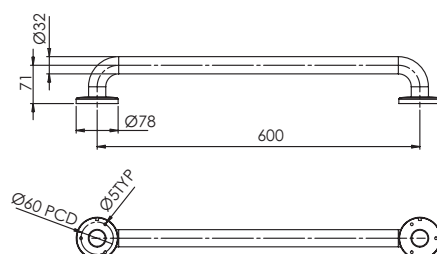
5



PRESSALIT CARE PLUS 450 SHOWER SEAT AND BACKREST MANUALLY HEIGHT ADJUSTABLE

Order Code:
EP-R7430182000
EP-R7430182112

6



600MM STAINLESS GRAB RAIL

Order Code: **SGR012**

7

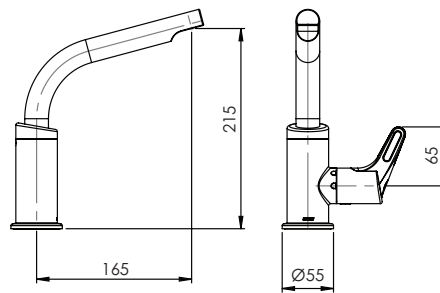


HIGH DEPENDENCY OPTION 2

This bathroom provides grab rail fixtures in the shower, support around the toilet and a wash basin that has a generous vanity storage component. Includes Enware Wellbeing sequential mixer tapware for ease of use, fine control and visibility of the lever aimed specifically at aging users. Wellbeing tapware should always be supplied with pre-set thermostatically controlled water using an Aquablend multi point Thermostatic Mixing Valve and for best management practice the optional Smart Flow™ TMV monitoring system.

ENWARE WELLBEING SEQUENTIAL BASIN MIXER 65MM LEVER AND 165MM SPOUT

Order Code:
WBBSQ65-165-5
WBBSQ65-165-6

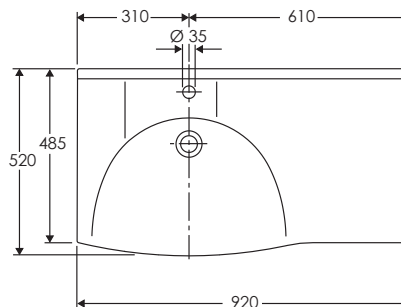


1

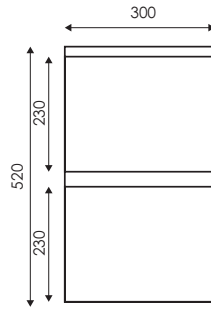
IFO - SIGN BASIN 900

Order Code:
IF07462 Left Bowl Basin
IF07472 Right Bowl Basin
IF096487L Left Bracket
IF096487R Right Bracket

tap hole and overflow options available
Shroud available Order Code: IFO4346F-900



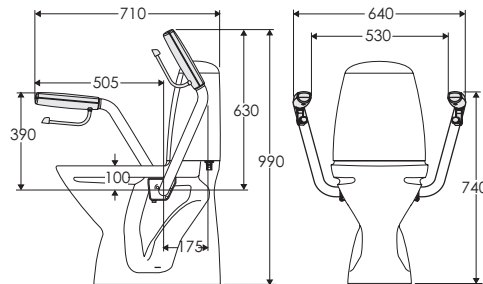
2



VANITY CABINET 300MM

Order Code: EVC300

3

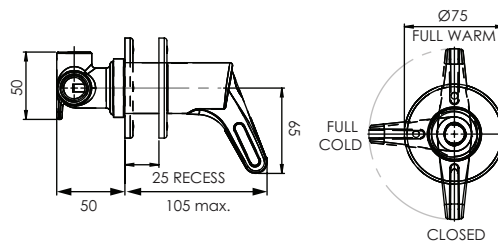


IFO INCREASED HEIGHT TOILET SUITE WITH SUPPORT ARMS - S TRAP

Includes Free Standing Ifo WC with Double Flap Toilet Seat - Anthracite Grey, Raised Flush Button and Support Arms

Order Code: CARE601

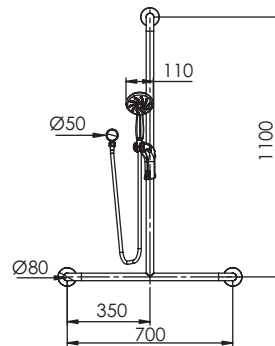
4



ENWARE WELLBEING SEQUENTIAL SHOWER MIXER 65MM LEVER

Order Code: WBSHSQ65

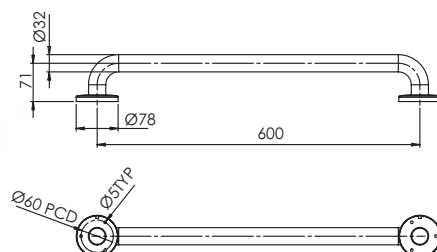
5



CHROME HAND HELD SHOWER AND HOSE WITH CENTRE INVERTED T STAINLESS STEEL GRAB RAIL

Order Code: SGR027CT

6



600MM STAINLESS GRAB RAIL

Order Code: SGR012

7



HIGH DEPENDENCY OPTION 3

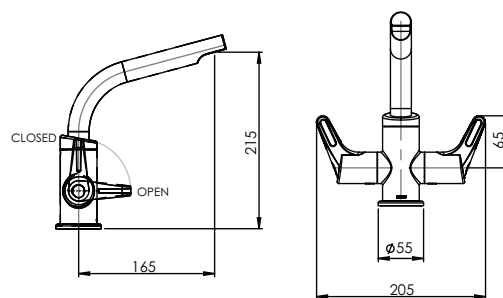
A bathroom arrangement that provides grab rail fixtures in the shower, support around the toilet and a washbasin that has a compact vanity storage component. Features tapware from our Wellbeing range with separate hot and cold controls for the basin and sequential mixing for the shower.

ENWARE WELLBEING DUAL MIXER 65MM LEVERS AND 165MM SPOUT

Order Code:

WBDMCD65-165-5

WBDMCD65-165-6



1

IFO - SIGN BASIN COMPACT 770

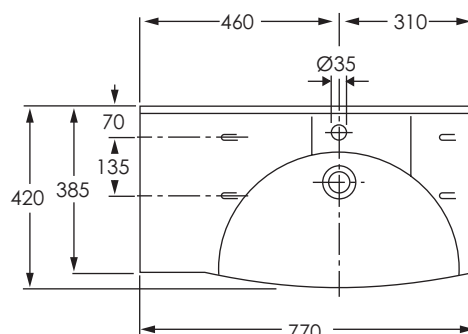
Order Code:

IF07762 Right Bowl Basin

IF07752 Left Bowl Basin

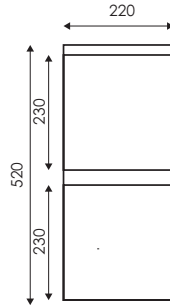
IF096377 Brackets

Shroud available Order Code: **IFO4346F-770**



IF07752 SHOWN

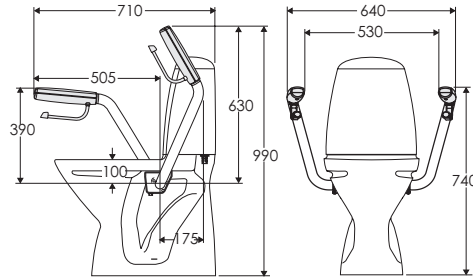
2



VANITY CABINET 220MM

Order Code: EVC220

3

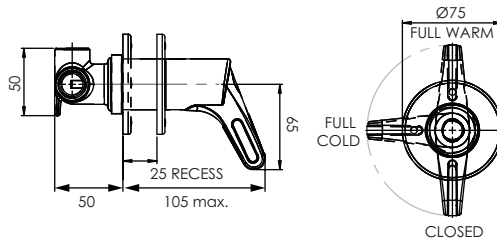


IFO INCREASED HEIGHT TOILET SUITE WITH SUPPORT ARMS - S TRAP

Includes Free Standing Ifo WC with Double Flap Toilet Seat - Anthracite Grey, Raised Flush Button and Support Arms

Order Code: CARE601

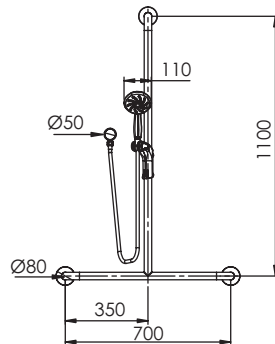
4



ENWARE WELLBEING SEQUENTIAL SHOWER MIXER 65MM LEVER

Order Code: WBSHSQ65

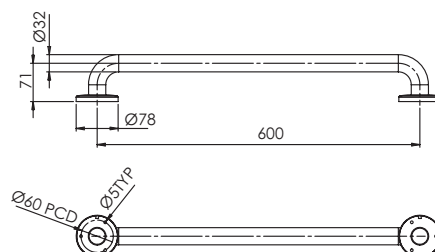
5



CHROME HAND HELD SHOWER AND HOSE WITH CENTRE INVERTED T STAINLESS STEEL GRAB RAIL

Order Code: SGR027CT

6



600MM STAINLESS GRAB RAIL

Order Code: SGR012

7

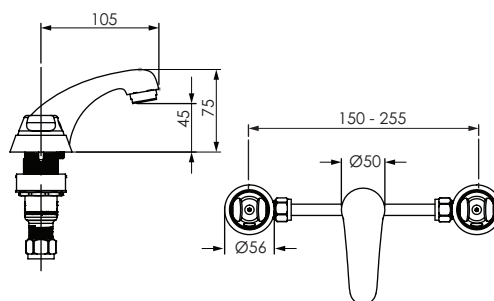


DEMENTIA MENTAL HEALTH OPTION 1

This bathroom provides a secure environment with minimal shower fixtures, a toilet with support arms and a large washbasin with substantial vanity cabinet storage. Includes high security tapware with vandal resistant and anti-ligature properties. Options for colour coding are available.

DETENTION BASIN SET

Order Code: **DET306**

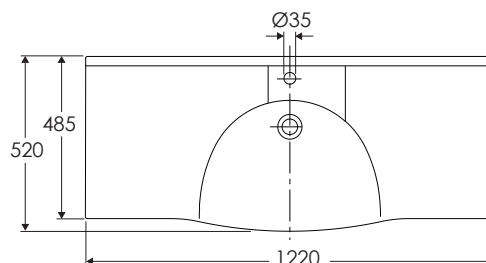


1

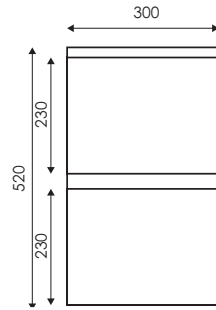
IFO SIGN BASIN CENTRE BOWL 1200

Order Code: **IF07492**

Shroud available Order Code: **IFO4346F-900**



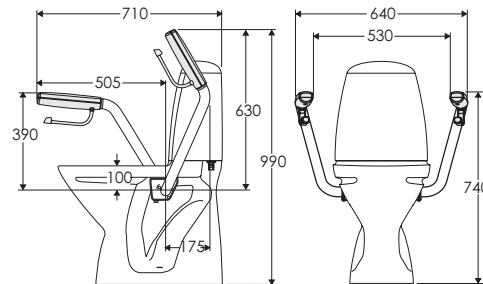
2



VANITY CABINET 300MM

Order Code: EVC300

3

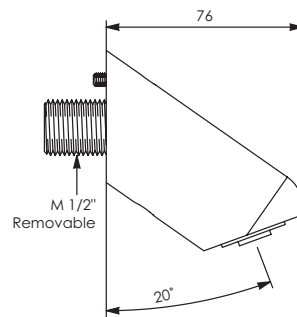


IFO INCREASED HEIGHT TOILET SUITE WITH SUPPORT ARMS - S TRAP

Includes Free Standing Ifo WC with Double Flap Toilet Seat - Anthracite Grey, Raised Flush Button and Support Arms

Order Code: CARE601

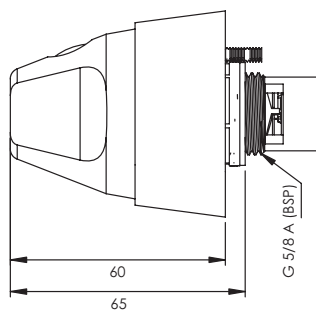
4



ENWARE-DELABIE TONIC JET VANDAL RESISTANT SHOWER HEAD

Order Code: TFC712000

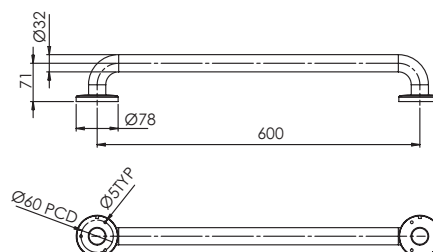
5



DETENTION RECESS ADAPTOR

Order Code: DET608

6



600MM STAINLESS GRAB RAIL

Order Code: SGR012

7



DEMENTIA MENTAL HEALTH OPTION 2

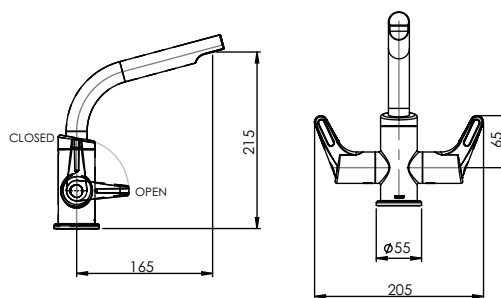
A bathroom arrangement that provides a secure environment with minimal shower fixtures, a toilet with support arms and a compact washbasin. Easy to use Wellbeing tapware features strong colour contrasts and separate hot and cold controls to assist recognition.

ENWARE WELLBEING DUAL MIXER 65MM LEVERS AND 165MM SPOUT

Order Code:

WBDMCD65-165-5

WBDMCD65-165-6



1

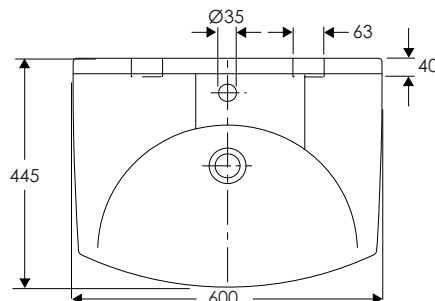
IFO SIGN BASIN 600

Order Code:

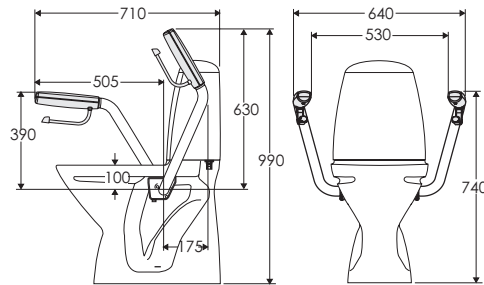
IF07362-100 - 1 tap hole no overflow

IF07362 - 1 tap hole & overflow

Shroud available Order Code: IFO4346



2

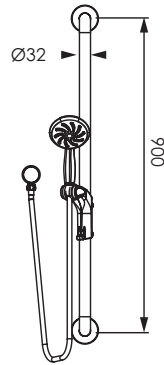


IFO INCREASED HEIGHT TOILET SUITE WITH SUPPORT ARMS - S TRAP

Includes Free Standing Ifo WC with
Double Flap Toilet Seat - Anthracite Grey,
Raised Flush Button and Support Arms

Order Code: **CARE601**

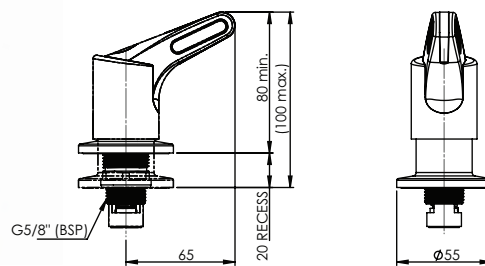
3



CHROME HAND HELD SHOWER AND SMOOTH HOSE WITH 900MM STAINLESS STEEL GRAB RAIL

Order Code: **SGR023C**

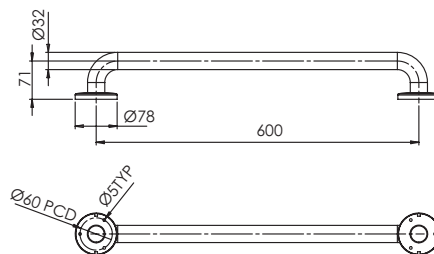
4



ENWARE WELLBEING CERAMIC DISC WALL TOP ASSEMBLY 65MM LEVER

Order Code:
WBWTC65-RTC
WBWTC65-LTC

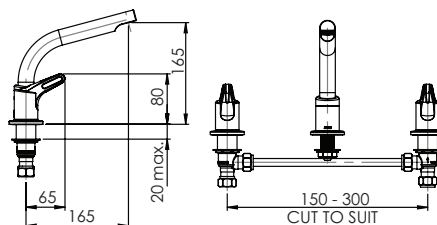
5



600MM STAINLESS GRAB RAIL

Order Code: **SGR012**

6



ENWARE WELLBEING CERAMIC DISC BASIN SET 65MM LEVER AND 165MM SPOUT

Order Code:
WBBCD65-165-5
WBBCD65-165-6

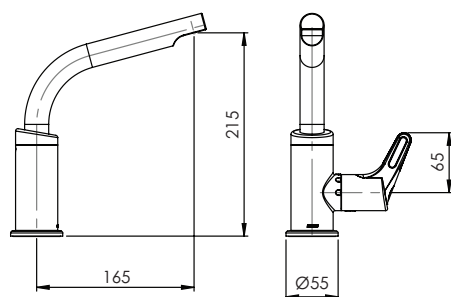


GENERAL CARE

A bathroom arrangement with grab rail provisions in the shower and support around the toilet with a round contoured washbasin with a contemporary yet familiar lever tap designed specifically for ageing users.

ENWARE WELLBEING SEQUENTIAL BASIN MIXER 65MM LEVER AND 165MM SPOUT

Order Code:
WBBSQ65-165-5
WBBSQ65-165-6

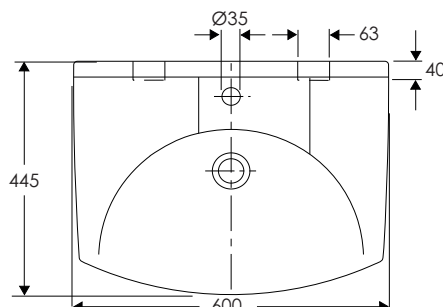


1

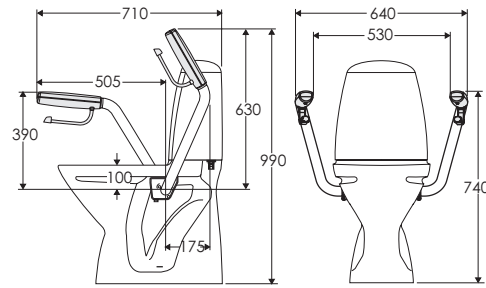
IFO SIGN BASIN 600

Order Code:
IF07362-100 - 1 tap hole no overflow
IF07362 - 1 tap hole & overflow

Shroud available Order Code: IF04346



2

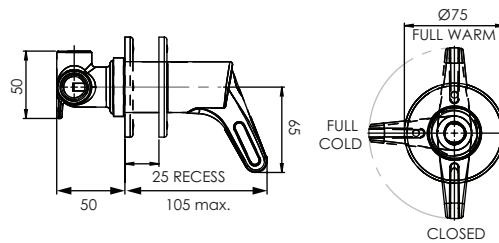


IFO TOILET SUITE WITH SUPPORT ARMS - S TRAP

Includes Free Standing Ifo WC with
Double Flap Toilet Seat - Anthracite Grey,
Raised Flush Button and Support Arms

Order Code: **CARE601**

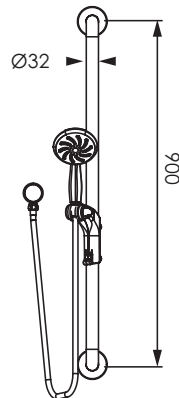
3



ENWARE WELLBEING SEQUENTIAL SHOWER MIXER 65MM LEVER

Order Code: **WBSHSQ65**

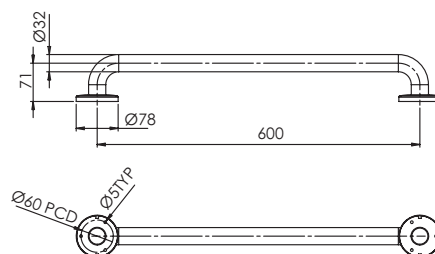
4



WHITE HAND HELD SHOWER AND HOSE WITH 900MM STAINLESS STEEL GRAB RAIL

Order Code: **SGR023**

5



600MM STAINLESS GRAB RAIL

Order Code: **SGR012**

6

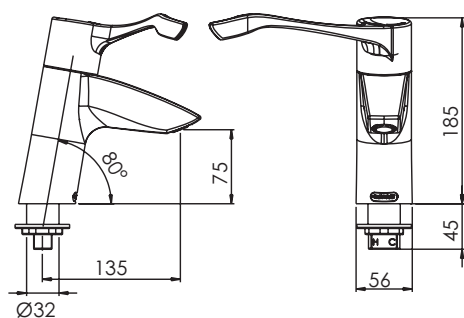


ASSISTED BATHROOM

These products are assigned to the care of individuals who need a carers involvement when it comes to toileting, showering and washing.

AQUABLEND SQX THERMOSTATIC BASIN MIXER WITH EXTENDED LEVER

Order Code: **ATM606D-4**

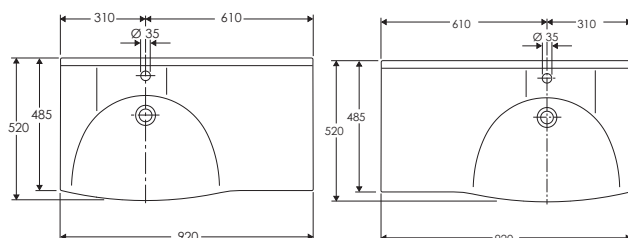


1

IFO SIGN BASIN 900

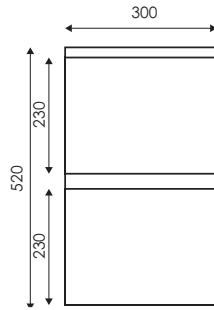
Order Code:

IF07462 Left Bowl
IF07472 Right Bowl



IF07462 SHOWN

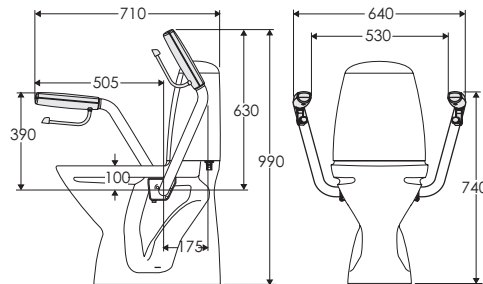
2



VANITY CABINET 300MM

Order Code: EVC300

3

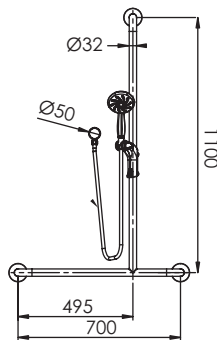


IFO TOILET SUITE WITH SUPPORT ARMS - S TRAP

Includes Free Standing Ifo WC with
Double Flap Toilet Seat - Anthracite Grey,
Raised Flush Button and Support Arms

Order Code: CARE601

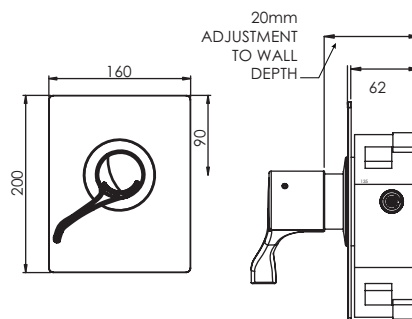
4



WHITE HAND HELD SHOWER WITH HOSE WITH RIGHT HAND INVERTED T STAINLESS STEEL GRAB RAIL

Order Code: SGR029TR

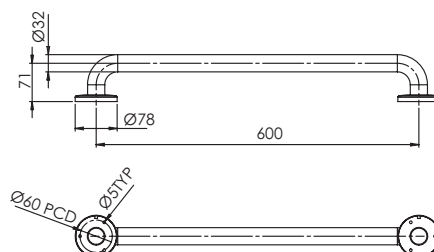
5



AQUABLEND SQX THERMOSTATIC SHOWER MIXER - RECESSED

Order Code: ATM608L

6



STAINLESS STEEL GRAB RAIL

Order Code:
SGR010 300mm
SGR012 600mm
SGR013 900mm

7



HAND WASH STATION

AQUABLEND™ ESQX TOUCH FREE ACTIVE SENSE OFF POINT OF USE THERMOSTATIC WALL MIXER

Order Code: In Wall Component

ATM620 Battery Operated

ATM621 Mains Operated

Order Code: Front of Wall Component

ATAM C2L3 8Lpm Laminar Flow

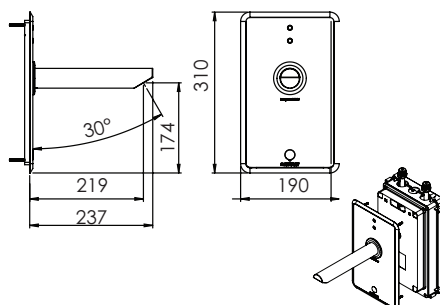
ATAM C2L5 6Lpm Laminar Flow

ATAM C2L6 4.73Lpm Laminar Flow

ATAB C2L3 8Lpm Laminar Flow

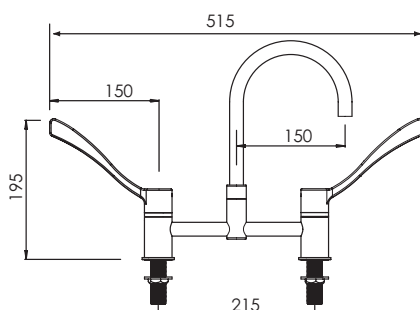
ATAB C2L5 6Lpm Laminar Flow

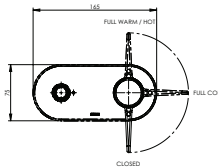
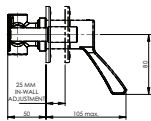
ATAB C2L6 4.73Lpm Laminar Flow



LEVA TYPE 50 150MM HOB MOUNTED MIXING SET WITH SPC020 AERATED SPOUT

Order Code: LEV150401

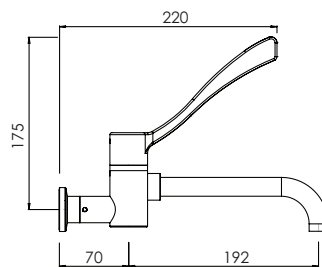




LEVA 80MM SEQUENTIAL BASIN MIXER NO SPOUT

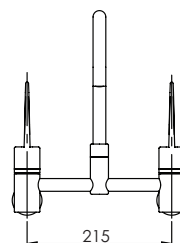
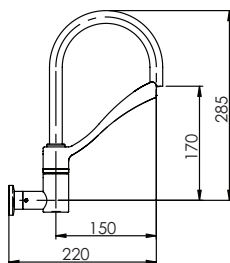
Order Code: **LEV80306XWSQ**

Range of suitable spouts are available
All spouts sold separately, Spout shown is SPC2003



LEVA 150MM WALL MOUNTED MIXING SET

Order Code: **LEV150420**

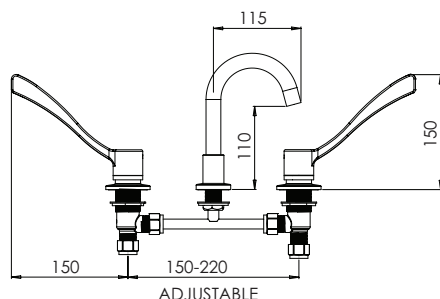


LEVA TYPE 51 150MM WALL MOUNTED MIXING SET

Order Code: **LEV150402**

LEVA 150MM BASIN SET WITH SPC001 FIXED AERATED SPOUT

Order Code: **LEV150306**



AQUABLEND SQX SURGEON MIXER

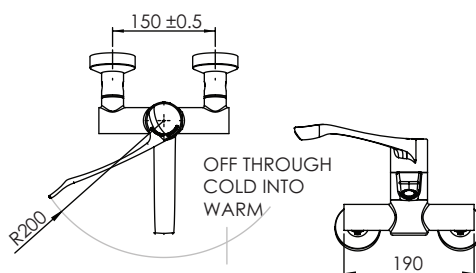
Order Code:

ATM611-3

ATM611-4

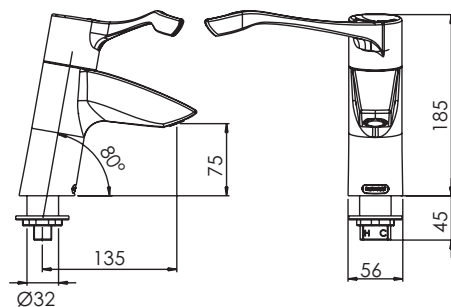
ATM611-5

ATM611-6



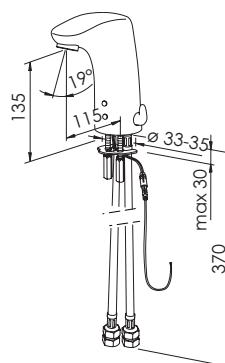
AQUABLEND SQX THERMOSTATIC BASIN MIXER WITH EXTENDED LEVER HANDLE

Order Code: **ATM606D-4**



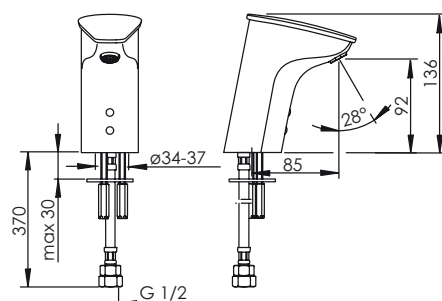
ENWARE-ORAS VEGA SENSOR ACTIVATED BASIN TAP WITH OPTIONAL TEMPERATURE ADJUSTER

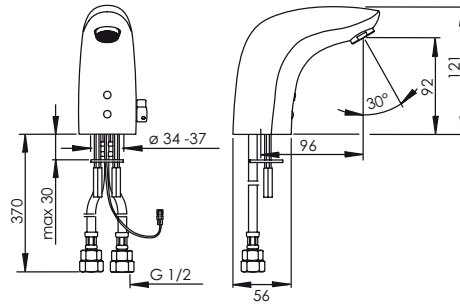
Order Code: **ENM6250**



ENDURA SENSOR ACTIVATED BASIN TAP - BATTERY

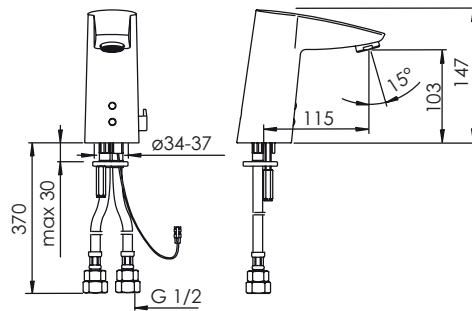
Order Code: **ENM6050**





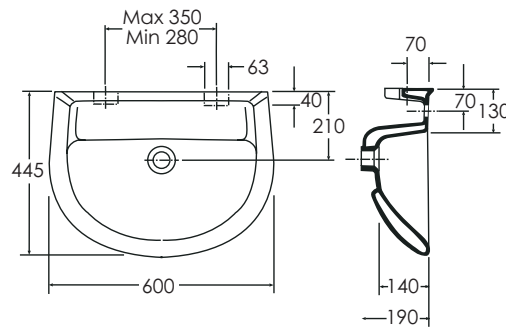
**ENWARE-ORAS VIVA SERIES
SENSOR ACTIVATED BASIN TAP WITH
OPTIONAL TEMPERATURE ADJUSTER**

Order Code: **ENM6120**



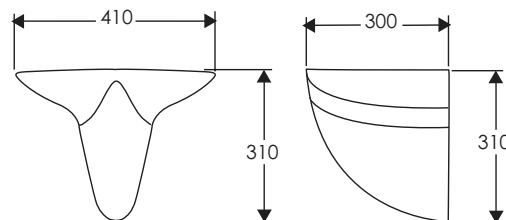
**ENMATIC CUBISTA SERIES SENSOR
ACTIVATED BASIN TAP WITH
TEMPERATURE ADJUSTER**

Order Code: **ENM6450**



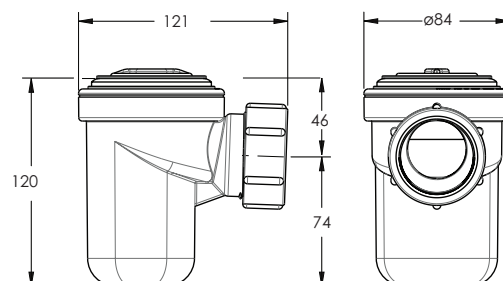
IFO CERA BASIN 600

Order Code: **IF02362-100**



IFO CERA SHROUD FOR 600 BASIN

Order Code: **IF04316FM2**



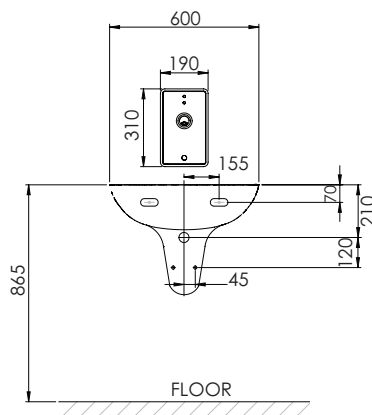
IFO - MICROTRAP 40MM

Order Code: **IF015917**



HAND WASH STATION KITS

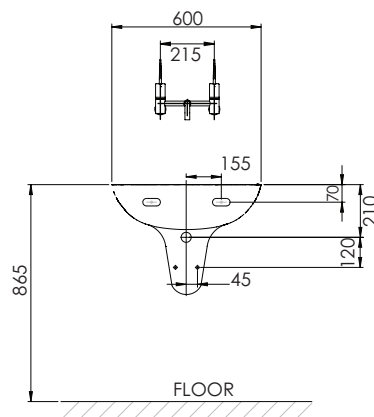
The Enware Handwash Station Kits provide a simple yet compliant solution to the requirements of the Australasian Health Facility Guidelines and meet hospital hand wash guide lines. They also aid in infection control whilst still being user friendly with easy maintenance. Ideal for hospitals, health care and research facilities.



TYPE B WASHBASIN KIT WITH ESQX TOUCH FREE POINT OF USE THERMOSTATIC MIXER

Includes: Basin, Shroud, Plug and Waste,
Water Trap, ESQX Thermostatic Mixer

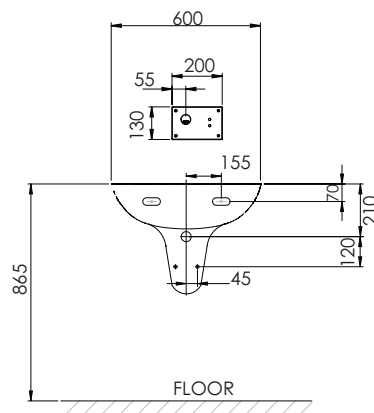
Order Code: KITB08



TYPE B WASHBASIN KITS WITH ELBOW LEVER SYSTEM

Includes: Basin, Shroud,
Plug and Waste, Water Trap, Tap

Order Code: **KITB03**



TYPE B WASHBASIN KITS WITH TOUCH FREE SENSOR TAP

Includes: Basin, Shroud, Plug and Waste,
Water Trap, Sensor Tap

Order Code: **KITB02**

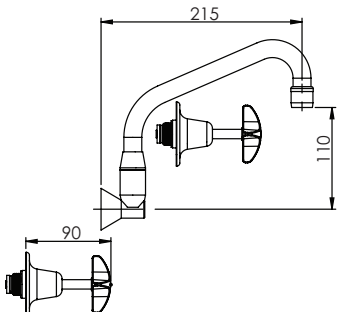


Heavy duty vandal proof tapware designed for reliability under the most rugged conditions.

CLEANERS ROOM

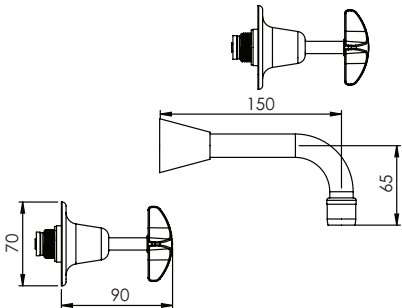
SCHOOL PATTERN RECESSED SET WITH SP110 SWIVEL SPOUT

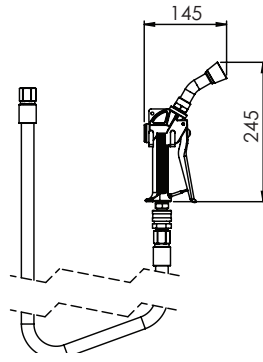
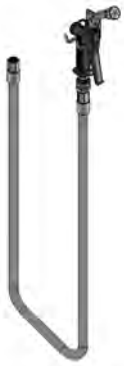
Order Code: VP315



SCHOOL PATTERN RECESSED SET WITH SP201 FIXED SPOUT

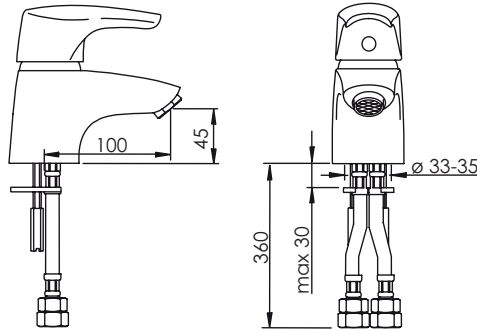
Order Code: VP314





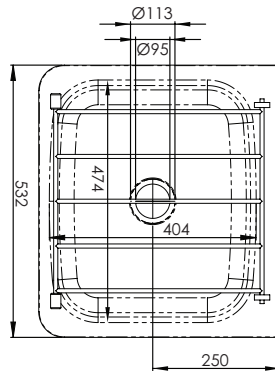
**HAND HELD DELRIN TRIGGER SPRAY
WITH SP325 FIXED SPRAY
AND 1.5 M HOSE**

Order Code: **FWS730D**



**ENWARE ORAS VIVA SERIES
BASIN MIXER**

Order Code: **SLM306A-4**

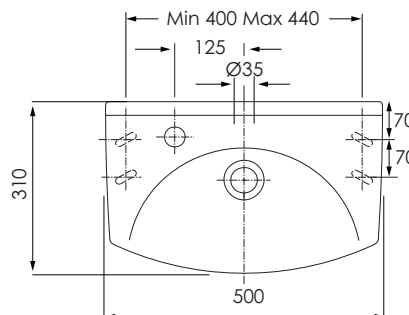


**STAINLESS STEEL
CLEANERS SINK WITH GRATE**

Order Code: **EWS600**



Tap is not included



IFO SIGN BASIN COMPACT 500

Order Code: **IF07318**

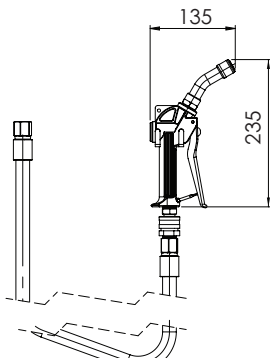


Tapware and spray rinse units for all clean up and wash-down purposes.

UTILITY /LAUNDRY ROOM

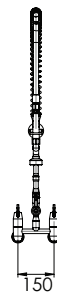
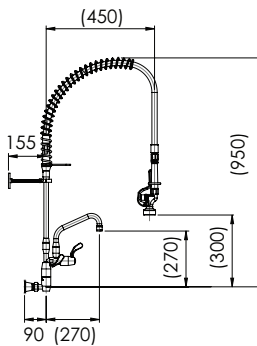
HAND HELD TRIGGER SPRAY AND 3M HOSE

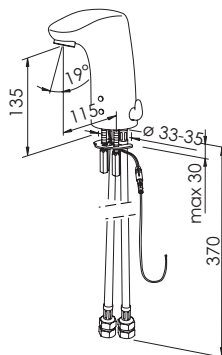
Order Code: **FWS830D**



PRE RINSE WALL EXPOSED MIXER ASSEMBLY WITH POT FILLER AND ULTRA-SPRAY SOFT RINSE TRIGGER SPRAY

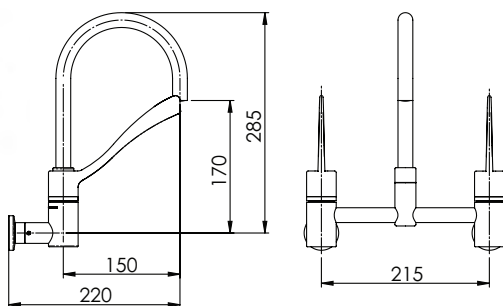
Order Code: **FWS131**





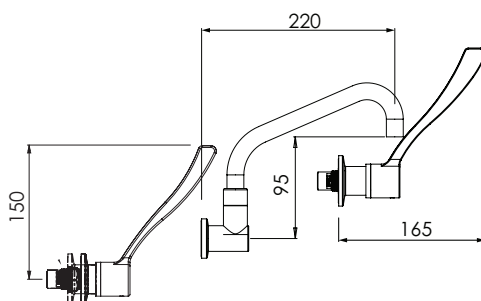
**ENWARE-ORAS VEGA SENSOR
ACTIVATED BASIN TAP**
with optional Temperature Adjuster

Order Code:
ENM6222 Mains Powered
ENM6250 Battery Operated



**LEVA TYPE 51 150MM
WALL MOUNTED MIXING SET**

Order Code: **LEV150402**

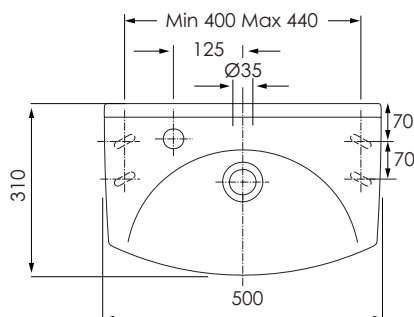


**LEVA 150MM RECESS
WALL SET WITH SPC110
SWIVEL AERATED SPOUT**

Order Code: **LEV150315**



Tap is not included



IFO SIGN BASIN COMPACT 500

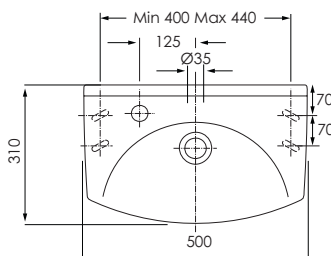
Order Code: **IF07318**



KITCHEN/KITCHENETTE

IFO SIGN BASIN COMPACT 500

Order Code: IF07318



Tap is not included

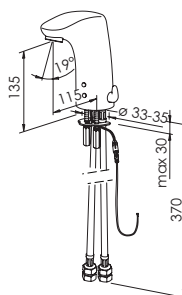
ENWARE-ORAS VEGA SENSOR ACTIVATED BASIN TAP

with optional Temperature Adjuster

Order Code:

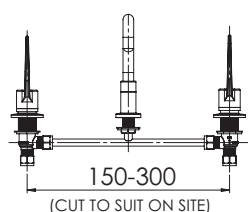
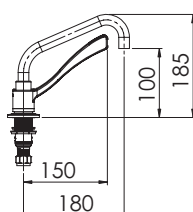
ENM6222 Mains Powered

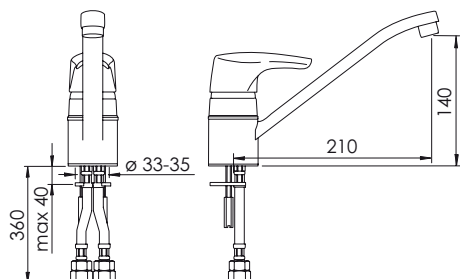
ENM6250 Battery Operated



LEVA 150MM SINK SET WITH SPC010 FIXED AERATED SPOUT

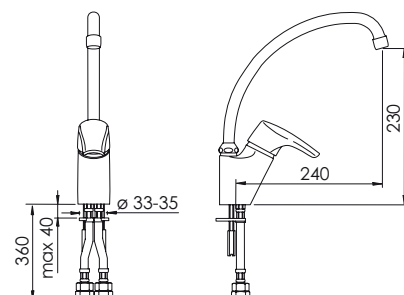
Order Code: LEV150307





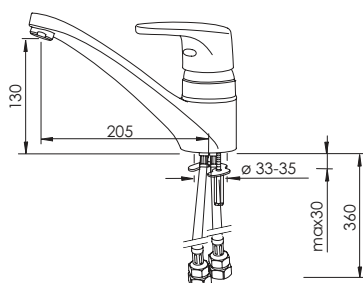
ENWARE ORAS VIVA SINK MIXER - AERATED

Order Code: **SLM307A**



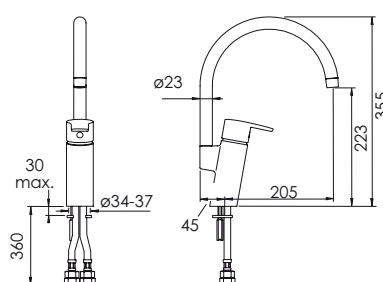
ENWARE ORAS VIVA SINK MIXER WITH AERATED GOOSENECK SPOUT

Order Code: **SLM309A**



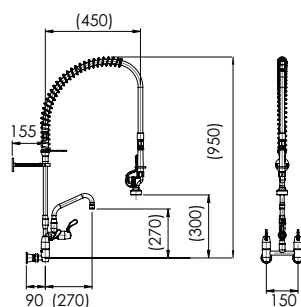
ENWARE ORAS VEGA SINK MIXER - AERATED

Order Code: **SLM607**



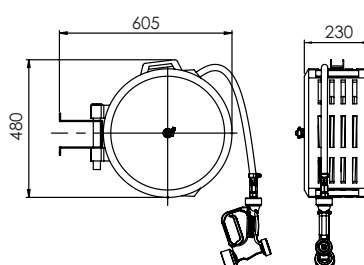
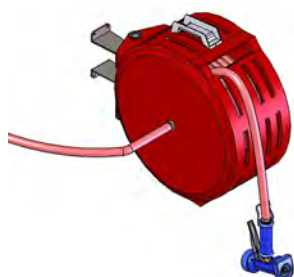
ENWARE ORAS CUBISTA SINK MIXER WITH GOOSENECK SPOUT - AERATED

Order Code: **SLM809**



PRE RINSE WALL EXPOSED MIXER ASSEMBLY WITH POT FILLER AND ULTRA-SPRAY SOFT RINSE TRIGGER SPRAY

Order Code: **FWS131**



HOT & COLD WASH DOWN HOSE REEL WITH FS722 ADJUSTABLE GUNNER TRIGGER SPRAY

Order Code: **FS728**

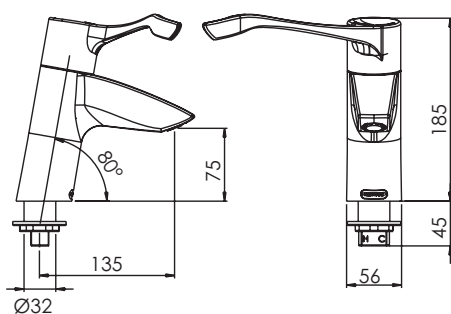


PUBLIC/ ACCESSIBLE /STAFF BATHROOMS & SHOWERS

This assortment of dedicated fixtures satisfy the needs of compliance within Australian Standards, as well as for standard bathroom areas for non prescriptive needs.

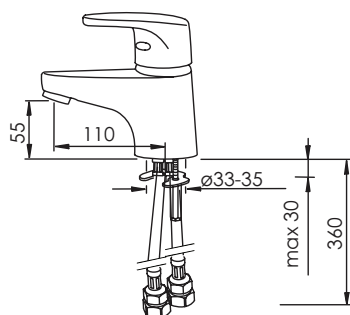
ENWARE ORAS VEGA BASIN MIXER WITH ACCESSIBLE EXTENDED LEVER

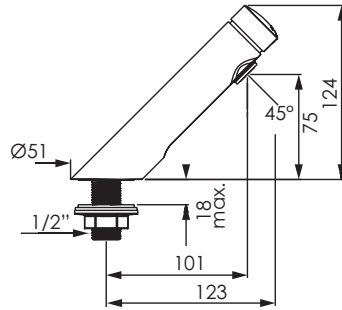
Order Code: SLM606D-4



ENWARE ORAS VEGA BASIN MIXER

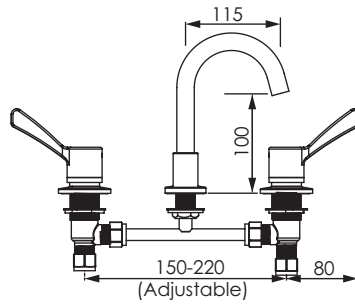
Order Code: SLM606





ENWARE DELABIE TEMPOSOFT TIME FLOW BASIN TAP

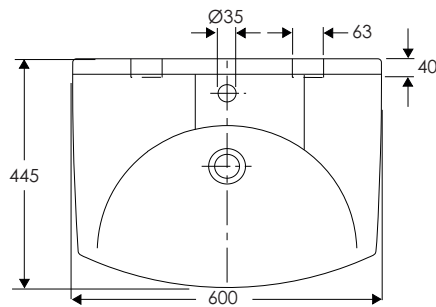
Order Code: TFC740510



LEVA 80MM BASIN SET WITH SPC001 FIXED AERATED SPOUT

Order Code: LEV80306

NOTE: These taps are not compatible with all basin types. Please check your specification wishes with our sales team to confirm what is possible.



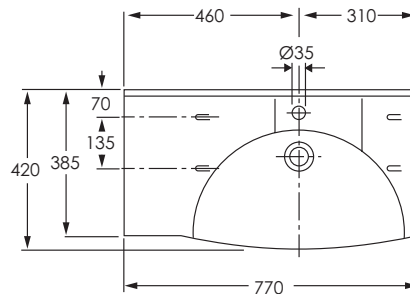
IFO SIGN BASIN 600

Order Code:

IF07362-100 - 1 tap hole no overflow

IF07362 - 1 tap hole & overflow

Shroud available Order Code: IFO4346



IFO - SIGN BASIN COMPACT 770

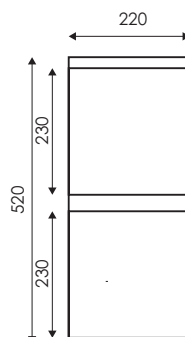
Order Code:

IF07762 Right Bowl Basin

IF07752 Left Bowl Basin

IF096377 Brackets

Shroud available Order Code: IFO4346F-770



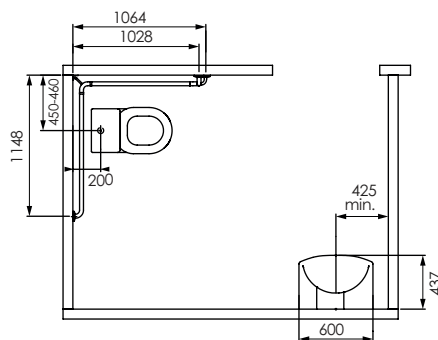
VANITY CABINET 220MM

Order Code: EVC220

ACCESSIBLE CARE KIT - 100 SERIES

Increased height IFO toilet, Anthracite Grey Pressalit Sign Toilet Seat with lid, 600mm IFO Sign Basin, Enware Oras Viva Basin Mixer, angled stainless steel grab rails - for left or right configurations

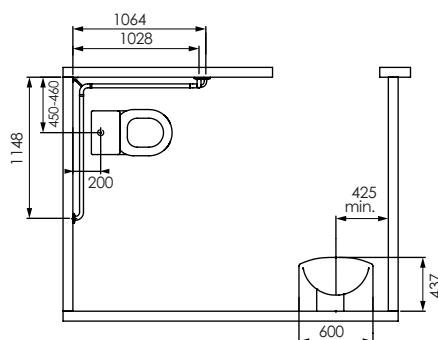
Order Code: **CARE101P, CARE101S**



ACCESSIBLE CARE KIT - 300 SERIES

Increased height IFO toilet, Anthracite Grey Pressalit Sign Toilet Seat with lid, 600mm IFO Sign Basin, Enware Oras Viva Basin Mixer, Aquablend 1500 Thermostatic Mixing Valve, angled stainless steel grab rails - for left or right configurations

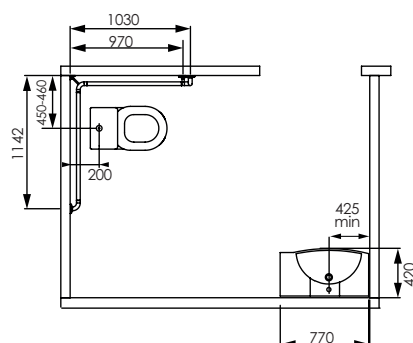
Order Code: **CARE301P, CARE301S**



ACCESSIBLE CARE KIT - 501 SERIES

Increased height IFO toilet, Anthracite Grey Pressalit Sign Toilet Seat with lid, IFO 770 Basin with left or rights shelf, Enware Oras Viva Basin Mixer, Aquablend 1500 Thermostatic Mixing Valve, angled white grab rails - for left or right configurations

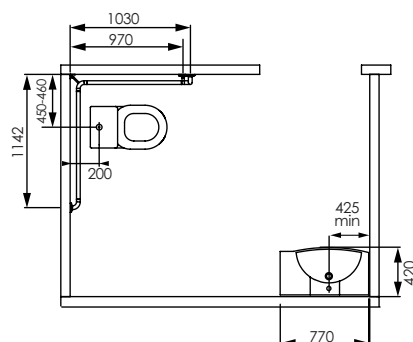
Order Code: **CARE501PL, CARE501PR, CARE501SL, CARE501SR**



ACCESSIBLE CARE KIT - 502 SERIES

Increased height IFO toilet, Anthracite Grey Pressalit Sign Toilet Seat with lid, IFO 770 Basin with left or rights shelf, Enmatic Vega no-touch electronic basin tap with temperature control, Aquablend 1500 Thermostatic Mixing Valve, angled white grab rails - for left or right configurations

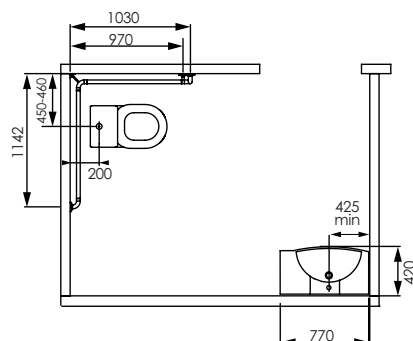
Order Code: **CARE502PL, CARE502PR, CARE502SL, CARE502SR**

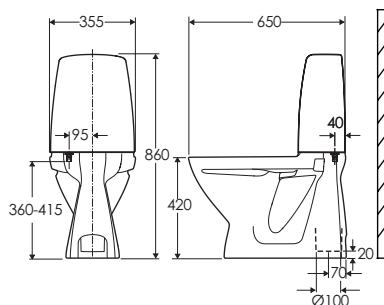


ACCESSIBLE CARE KIT - 503 SERIES

Increased height IFO toilet, Anthracite Grey Pressalit Sign Toilet Seat with lid, IFO 770 Basin with left or rights shelf, Aquablend SQX Mixer, angled white grab rails - for left or right configurations

Order Code: **CARE503PL, CARE503PR, CARE503SL, CARE503SR**



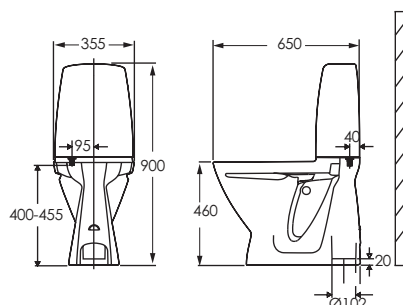


IFO SIGN TOILET

Order Code:

IFO6860 S Trap
IFO6862 P Trap

NOTE: seat sold separately



IFO TOILET KIT AS1428.1-2009 SET UP

IFO Sign Increased Height Toilet with
Raised Height Button and Anthracite Grey
Pressalit Sign toilet seat with lid

Order Code:

CARE6861 - S Trap
CARE6872 - P trap

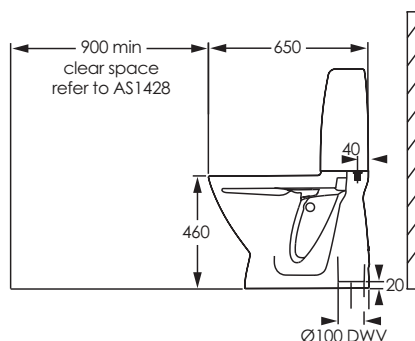


IFO554112 SHOWN

PRESSALIT TOILET SEAT

Order Code:

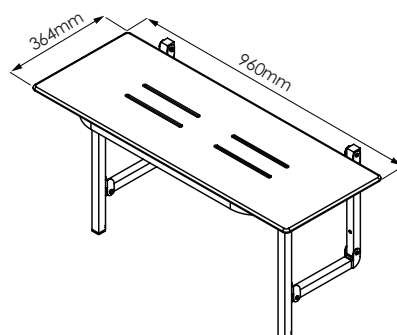
IF0724D55999 Pressalit IFO Hard Seat - white
IF0624000-D039999 Pressalit Sign Soft Close Seat - white
IF0553000-BD1999 Pressalit Sign Hard Seat No Lid - white
IF0554112-BD1999 Pressalit Sign Hard Seat - anthracite grey
IF0554000-BD1999 Pressalit Sign Hard Seat - white



ACCESSIBLE AMBULANT CAREKIT SUITABLE FOR AS1428.1 APPLICATIONS

Increased height IFO toilet with raised flush
button, Anthracite Grey Pressalit Sign Toilet
Seat with lid, Stainless steel L-shaped grab
rails one pair - left and right

Order Code: **CAREAMBS**

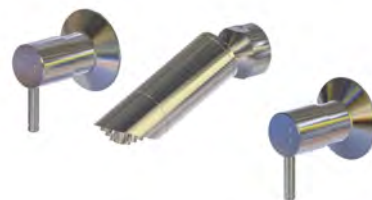
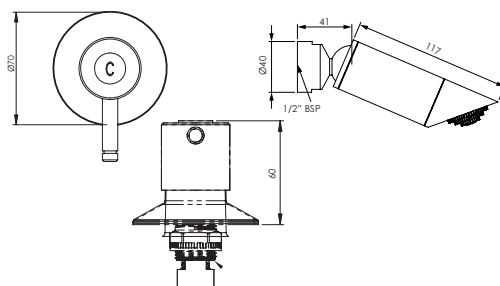


FOLD DOWN SHOWER SEAT STAINLESS STEEL

Order Code: **CD-SS964**

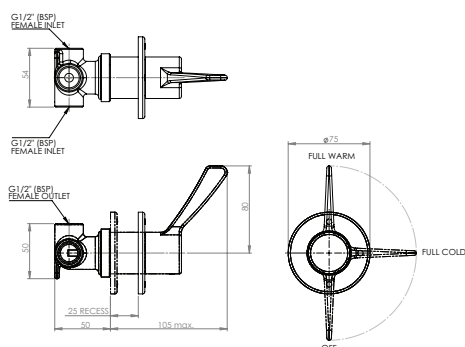
PLAZA LEVER RECESSED SET WITH DELUXE BALL SWIVEL JOINT SHOWER ROSE

Order Code:
PZL316D Recessed Set and Shower
SP262 Shower Rose only



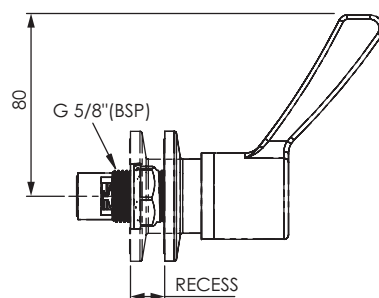
LEVA 80MM SEQUENTIAL SHOWER MIXER

Order Code: **LEV80308SQ**



LEVA 80MM RECESS ADAPTOR

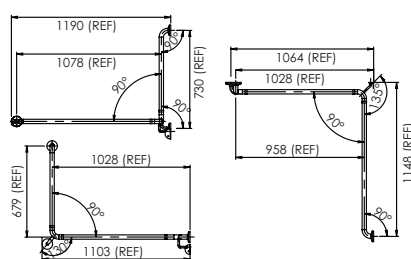
Order Code: **LEV80308**



ACCESSIBLE TOILET ANGLED CORNER GRAB RAIL - STAINLESS STEEL

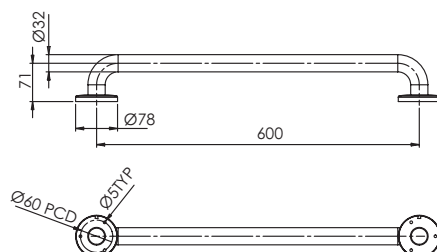
Order Code: **SGR014**

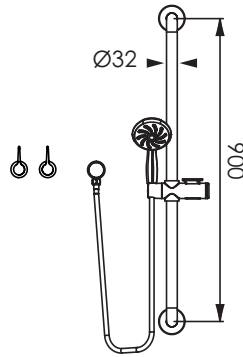
Suitable for left or right configurations



STAINLESS GRAB RAIL 300MM, 600MM, OR 900MM

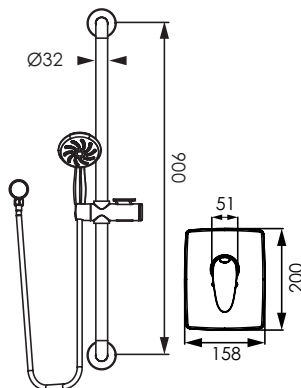
Order Code:
SGR010 300mm
SGR012 600mm
SGR013 900mm





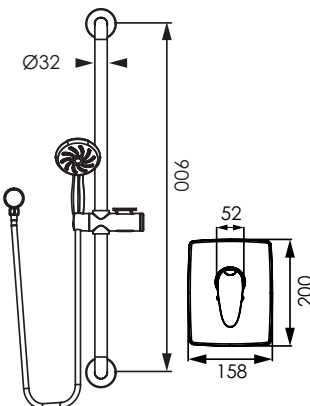
**LEVA 80 RECESS SET WITH
SGR023C CHROME HAND HELD
SHOWER, 1.5M HOSE AND 900MM
STAINLESS STEEL GRAB RAIL**

Order Code: **LEV80364C**



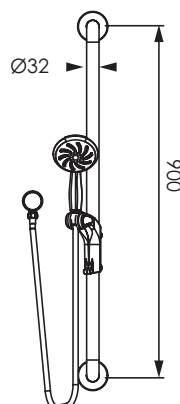
**ENWARE ORAS VEGA MIXER AND
HAND HELD SHOWER SET WITH
900MM GRAB RAIL - CHROME**

Order Code: **SLM664C**



**ENWARE ORAS VIVA MIXER AND
HAND HELD SHOWER SET WITH
900MM GRAB RAIL - CHROME**

Order Code: **SLM364C**



**WHITE HAND HELD SHOWER AND
HOSE WITH 900MM STAINLESS
STEEL GRAB RAIL**

Order Code: **SGR023**



BARRIER FREE DRINKING FOUNTAINS

DELUXE BARRIER FREE WALL MOUNTED DRINKING FOUNTAIN WITH FRONT PUSH BUTTON OPERATION

Order Code: CDF300D



DELUXE BARRIER FREE WALL MOUNTED DRINKING FOUNTAIN WITH CHILLER

Order Code: CDF300DC



BARRIER FREE WALL MOUNTED DRINKING FOUNTAIN WITH FRONT PUSH BUTTON OPERATION

Order Code: CDF330D





**BARRIER FREE WALL MOUNTED
DRINKING FOUNTAIN WITH CHILLER**

Order Code: **CDF330DC**



**DELUXE BARRIER FREE HI-LO WALL
MOUNTED DRINKING FOUNTAIN WITH
FRONT PUSH BUTTON OPERATION**

Order Code: **CDF320D**



**DELUXE BARRIER FREE HI-LO
WALL MOUNTED DRINKING FOUNTAIN FRONT
PUSH BUTTON OPERATION WITH CHILLER**

Order Code: **CDF320DC**



**BARRIER FREE HI-LO
WALL MOUNTED DRINKING FOUNTAIN
WITH FRONT PUSH BUTTON OPERATION**

Order Code: **CDF340D**



**BARRIER FREE HI-LO WALL MOUNTED
DRINKING FOUNTAIN WITH CHILLER**

Order Code: **CDF340DC**



**ACCESSIBLE PEDESTAL MOUNTED
DRINKING FOUNTAIN WITH
FRONT PUSH BUTTON OPERATION**

Order Code:

CDF401D Green

CDF400D Galvanised Finish

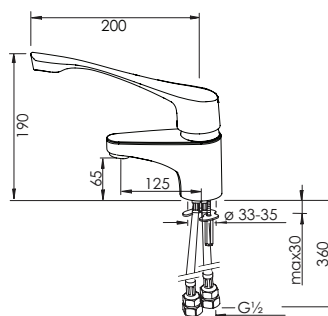


CHANGING PLACES

A Changing Places bathroom is a dedicated room to allow people with a disability to be changed, toileted and showered in safety with dignity, Changing Places rooms provide a safe environment for carers and end users alike.

ENWARE-ORAS VEGA BASIN MIXER WITH EXTENDED CAST SPOUT AND LEVER HANDLE

Order Code: **SLM606ESD**



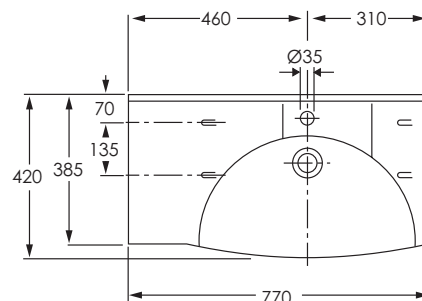
1

IFO - SIGN BASIN COMPACT 770

Order Code:
IF07762 Right Bowl Basin
IF07752 Left Bowl Basin

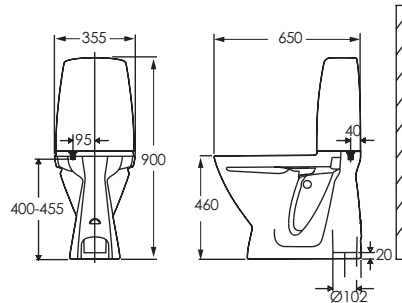
IF096377 Brackets

Shroud available Order Code: **IFO4346F-770**



IFO7752 SHOWN

2

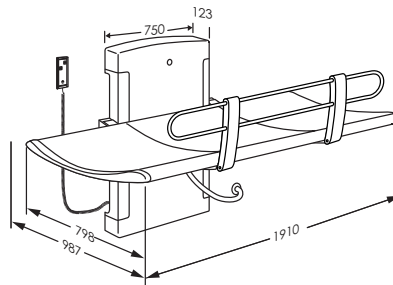


IFO TOILET KIT AS1428.1-2009 SET UP

IFO Sign Increased Height Toilet with
Raised Height Button and Anthracite Grey
Pressalit Sign toilet seat with lid

Order Code:
CARE6861 - S Trap
CARE6872 - P trap

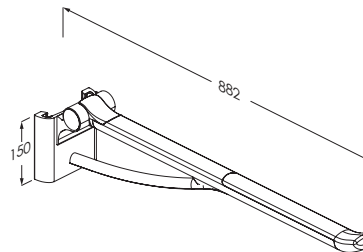
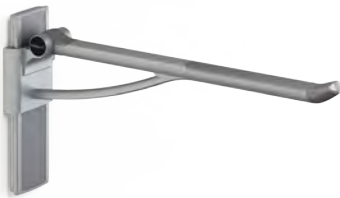
3



NURSING BENCH ADJUSTABLE HEIGHT WITH ELECTRIC MOTOR AND SAFETY RAIL

Order Code:
EP-R8538021 1800mm

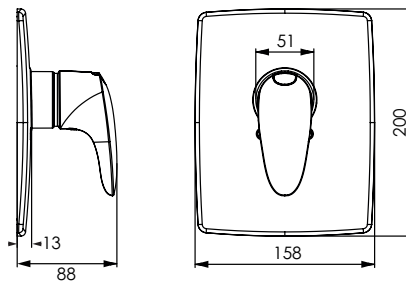
4



PRESSALIT CARE PLUS SUPPORT ARM

Order Code:
EP-R9864182 Grooved Track
EP-R3108000 Support Arm White
EP-R3108112 Support Arm Anthracite Grey

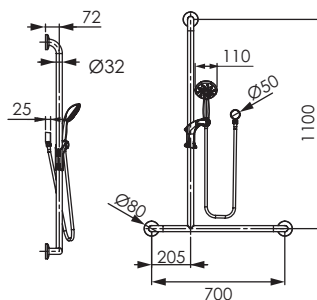
5



ENWARE ORAS VEGA RECESSED SHOWER MIXER

Order Code: **SLM608**

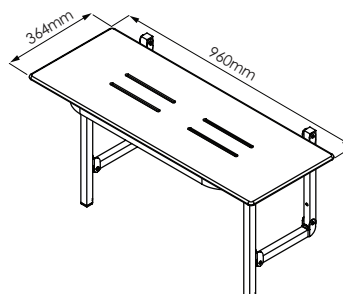
6



WHITE HAND HELD SHOWER WITH HOSE AND LEFT HAND INVERTED T STAINLESS STEEL GRAB RAIL

Order Code: **SGR028TL**

7



FOLD DOWN SHOWER SEAT STAINLESS STEEL

Order Code: **CD-SS964**

8

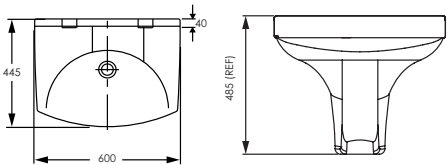


A dedicated group of items sourced and developed through many years of refinement in the mental health, bariatric and aged care markets.

SPECIALTY PRODUCTS

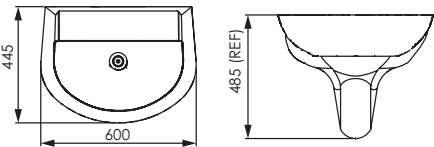
**MENTAL HEALTH KIT WITH
600MM SIGN BASIN, SHROUD,
WASTE AND BOTTLE TRAP**

Order Code: IF07360-100MHKIT



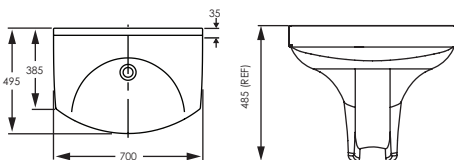
**MENTAL HEALTH KIT WITH
600MM CERA BASIN, SHROUD,
WASTE AND BOTTLE TRAP**

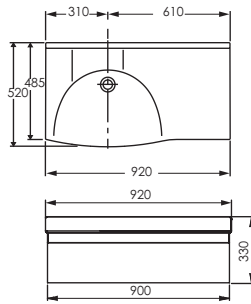
Order Code: IF02360-100MHKIT



**MENTAL HEALTH KIT WITH
700MM SIGN BASIN, SHROUD,
WASTE AND BOTTLE TRAP**

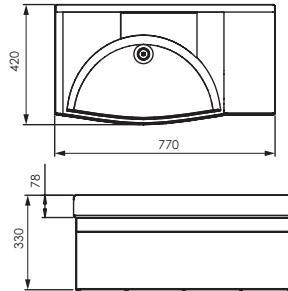
Order Code: IF07370-100MHKIT





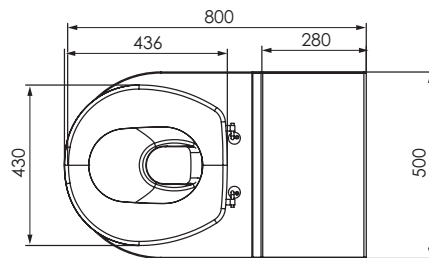
MENTAL HEALTH KIT 900MM SIGN BASIN, PS FRAME, WASTE AND BOTTLE TRAP

Order Code:
IF07460-100MHKIT Left Hand Bowl
IF07470-100MHKIT Right Hand Bowl



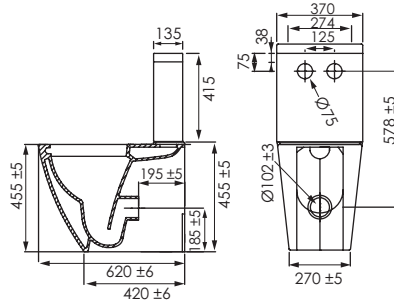
MENTAL HEALTH KIT WITH 770MM LEFT HAND BOWL SIGN BASIN, PS FRAME, WASTE AND BOTTLE TRAP

Order Code:
IF07750-100MHKIT Left Hand Bowl
IF07760-100MHKIT Right Hand Bowl



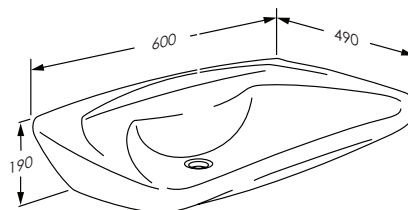
WHITE BARIATRIC TOILET PAN WITH SEAT (NO LID)

Order Code: EWS505B



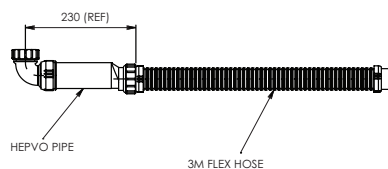
BACK TO WALL RIMLESS CLOSE COUPLED RAISED HEIGHT TOILET WITH SEAT

Order Code: EBTW610R



PRESSALIT CARE ERGONOMIC WASH BASIN

Order Code: EP-R2051000



FLEXIBLE WASTE SYSTEM

Order Code: CD-FW40

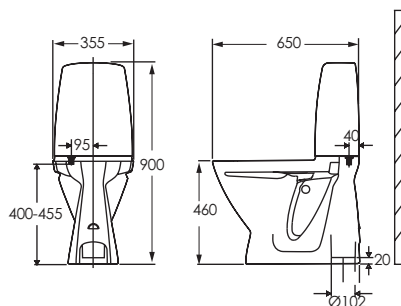
IFO SIGN TOILET INCREASED HEIGHT

Order Code:

IF06861 S trap

IF06872 P trap

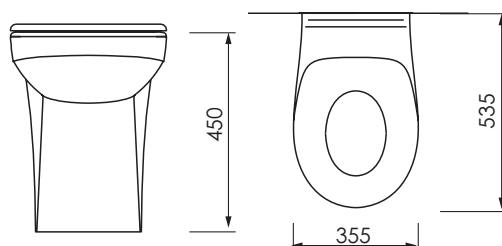
NOTE: seat sold separately



TWYFORD AVALON RIMLESS BACK TO WALL INCREASED HEIGHT TOILET PAN

Order Code: **TWY-AV1968WH**

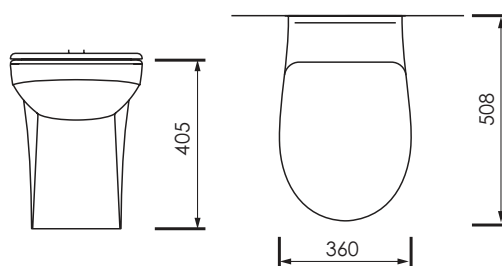
NOTE: seat sold separately



TWYFORD SOLA RIMLESS BACK TO WALL TOILET PAN

Order Code: **TWY-SA1968WH**

NOTE: seat sold separate

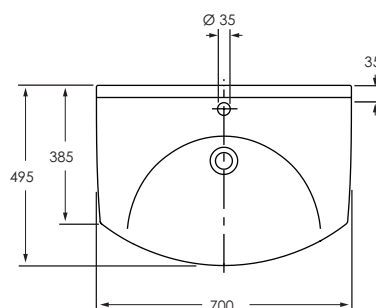


IFO SIGN BASIN 700

Order Code:

IF07372-100 (1 x tap hole no overflow)

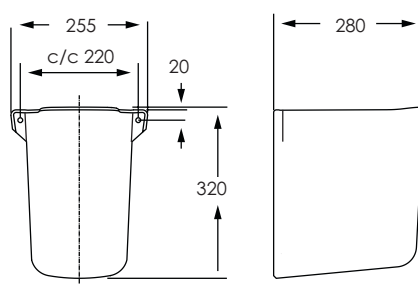
IF07372 (1 tap hole + overflow)

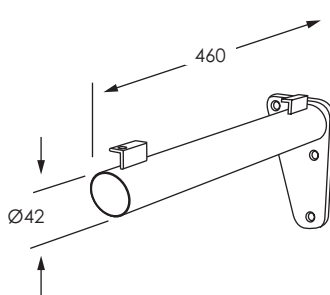


IFO SIGN VITREOUS SHROUD

Order Code: **IF04346**

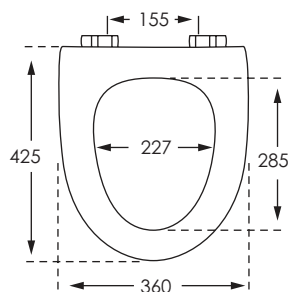
*Suits IFO Sign 600, Sign 700
and Sign Art 700 basins*





FREE HANGING BRACKET

Order Code:
IF096487 Set
IF096487L Left
IF096487R Right



IFO PRESSALIT SIGN TOILET SEAT WHITE - NO LID

Order Code: **IF0553000-BD1999**

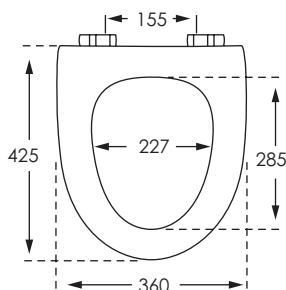


PRESSALIT TOILET SEAT

Order Code:

IF0724D55999 Pressalit IFO Hard Seat - white
IF0624000-D039999 Pressalit Sign Soft Close Seat - white
IF0553000-BD1999 Pressalit Sign Hard Seat No Lid - white
IF0554112-BD1999 Pressalit Sign Hard Seat - anthracite grey
IF0554000-BD1999 Pressalit Sign Hard Seat - white

IF0554112 shown to left



SIGN SEAT WITH LID - WHITE

Order Code: **IF0554000-BD1999**



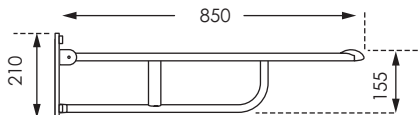
PRESSALIT CARE RANGE

TOILET SUPPORT ARM - FIXED HEIGHT

Order Code:

EP-R1100000 Support Arm

EP-R1151 Toilet paper holder

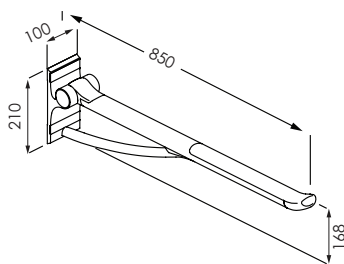


PRESSALIT CARE PLUS SUPPORT ARM FIXED HEIGHT

Order Code:

EP-R3085000 White

EP-R3085112 Anthracite Grey

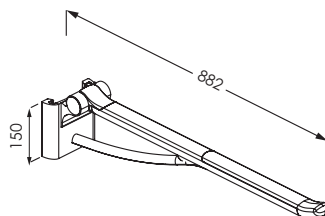


PRESSALIT CARE PLUS SUPPORT ARM ADJUSTABLE HEIGHT

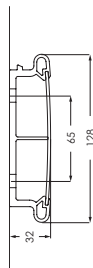
Order Code:

EP-R3108000 White

EP-R3108112 Anthracite Grey

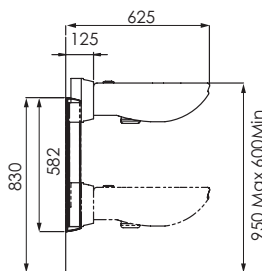


Shown with track (sold separately)



PRESSALIT CARE PLUS 400MM GROOVED VERTICAL WALL TRACK

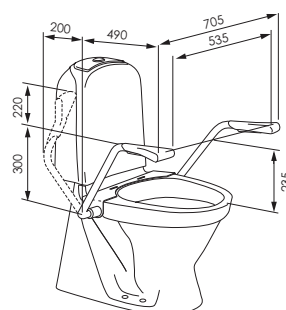
Order Code:
EP-R9864182



SHAMPOO BASIN PACKAGE ADJUSTABLE HEIGHT

Includes Basin Bracket, Basin and Tapware

Order Code: **CD631**

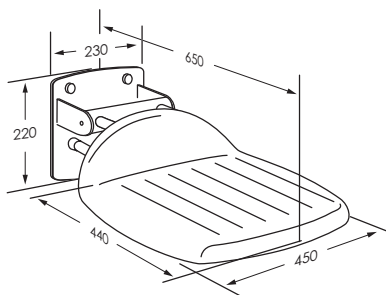


PRESSALIT CARE TOILET SUPPORT SYSTEM

Order Code: **EP-R1170**

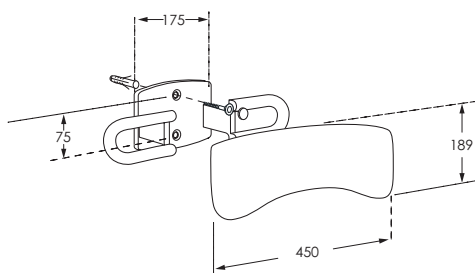
SHOWER SEAT FIXED HEIGHT

Order Code: EP-R1600000



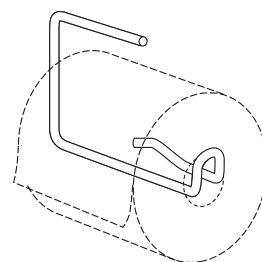
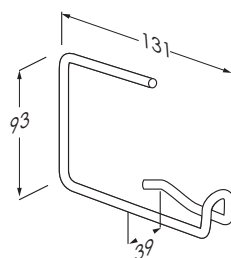
BACK REST TO SUIT EP-R1600 FOLDING SHOWER SEAT

Order Code: EP-R1651000



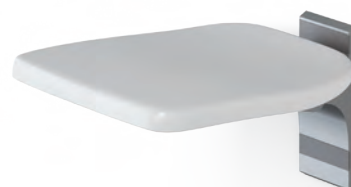
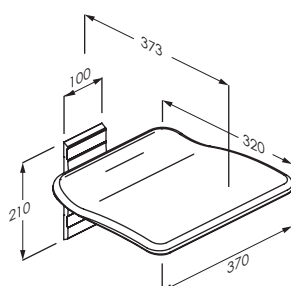
PRESSALIT CARE TOILET ROLL HOLDER

Order Code: EP-R1175



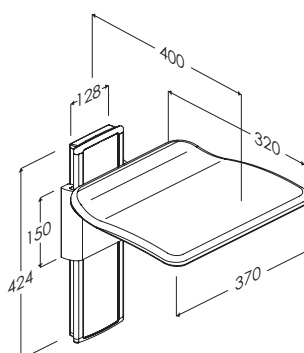
PRESSALIT CARE PLUS FOLDING SEAT FIXED HEIGHT

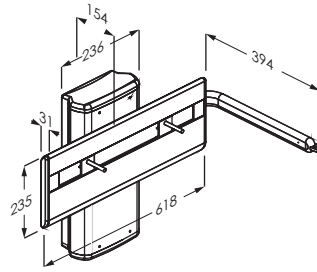
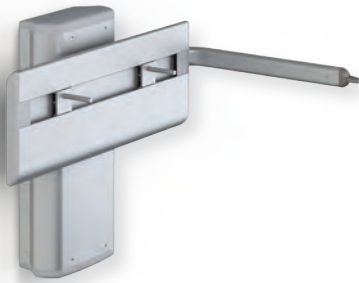
Order Code: EP-R5510000



PRESSALIT CARE PLUS FOLDING SEAT MANUALLY HEIGHT ADJUSTABLE

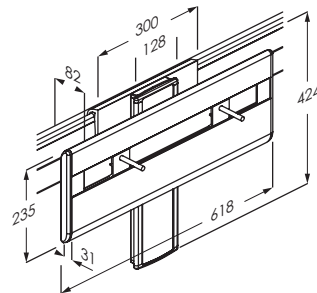
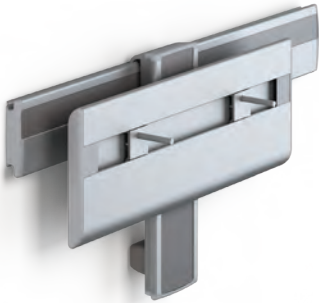
Order Code: EP-R5520182000





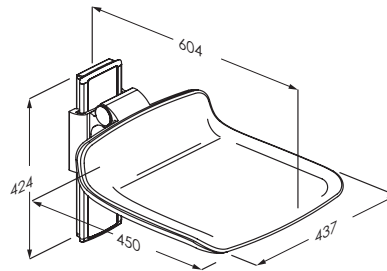
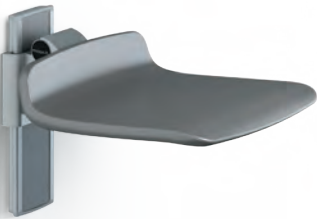
WASH BASIN BRACKET MANUALLY HEIGHT ADJUSTABLE

Order Code:
EP-R4650 Gas Assisted
EP-R4550182 Manual



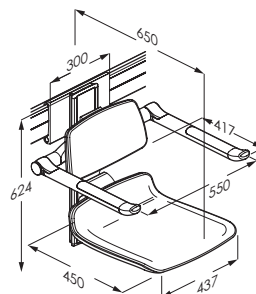
WASH BASIN BRACKET - MANUALLY HEIGHT ADJUSTABLE FOR MOUNTING ON HORIZONTAL WALL TRACK

Order Code: EP-R4580182



450 SHOWER SEAT MANUALLY HEIGHT ADJUSTABLE

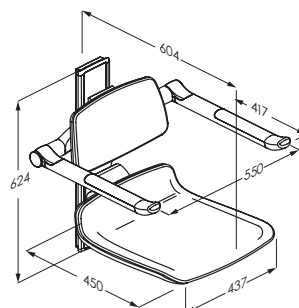
Order Code: EP-R7410182000 White
EP-R7410182112 Anthracite Grey



SHOWER SEAT WITH BACKREST AND ARMREST FOR MOUNTING ON HORIZONTAL WALL TRACK*

Order Code: EP-7450182000 White
EP-R7450182112 Anthracite Grey

*Horizontal wall track not included



450 SHOWER SEAT WITH BACKREST AND ARMREST MANUALLY HEIGHT ADJUSTABLE

Order Code: EP-R7430182000 White
EP-R7430182112 Anthracite Grey



INDIVO HEIGHT ADJUSTABLE KITCHENS

LIFTS FOR WORKTOPS

Ideal in all situations where both seated and standing users share the same kitchen.

ELECTRIC LIFTS - adjust worktop heights using switches located on the front edge or the worktop and can adjust height over a range of 280mm

MANUAL LIFTS - adjust worktop heights using a crank handle. This budget solution is commonly used in kitchens not requiring frequent adjustment.

They can be used with worktops with or without an edge. Crank handle socket can be positioned anywhere along front edge, except under a sink or

hob and can adjust height over a range of 300mm

BRACKETS - a simple budget solution for kitchens where only occasionally height adjustment is required. The lift height is adjusted using a spanner and can be performed by one person. Height can be adjusted over a range of 250mm

LIFTS FOR FREE STANDING WORKTOPS

These lifts are intended for use on a freestanding worktop or dining table - heights can be quickly and easily adjusted for any user or situation. Great option when walls are not strong enough to support the wall mounted models.



The design of the legs and feet make the table stable and secure, and ensure the lift causes minimal inconvenience to people in wheelchairs. All sides can be accessed easily.

ELECTRIC LIFTS - adjustments are made via switches set in the edge or directly under the worktop. Height can be adjusted over a range of 300mm.

MANUAL LIFTS - adjust worktop heights using a crank handle. This budget solution is commonly used when infrequent adjustment is required. Height can be adjusted over a range of 300mm

ELECTRIC LIFTS FOR WALL CUPBOARDS

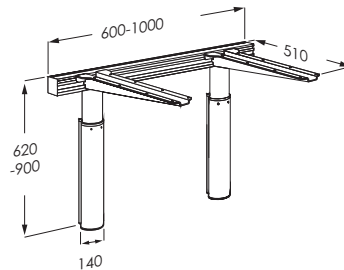
Wall cupboards may be moved vertically towards the user - they can be lowered 430mm and extended 180mm enabling seated users to see and access contents. Height-adjustable wall cupboards provide extra storage options in kitchens where cupboards cannot be installed under worktops.

Height adjustments are made via switches in the front worktop edge - colour coded to be different from worktop switches and the lift motors are as discreet as possible, regardless of the cupboard position.

600 - 1000MM ELECTRIC LIFT FOR WORKTOP

Height-adjustable 280 mm. Includes 2 telescopic legs, 2 brackets, cross brace and switch.

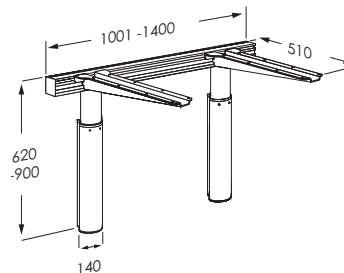
Order Code: **EP-RK1010**



1001 - 1400 MM ELECTRIC LIFT FOR WORKTOP

Height-adjustable 280 mm. Includes 2 telescopic legs, 2 brackets, cross brace and switch

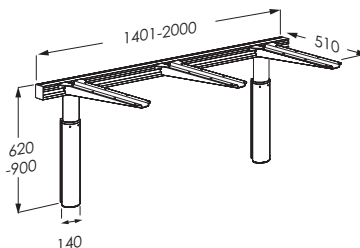
Order Code: **EP-RK1011**



1401 - 2000MM ELECTRIC LIFT FOR WORKTOP

Height-adjustable 280 mm. Includes 2 telescopic legs, 3 brackets, cross brace and switch

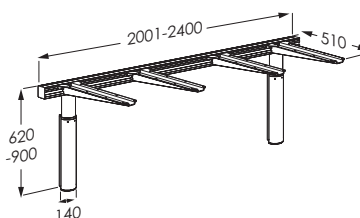
Order Code: **EP-RK1012**



2001 - 2400MM ELECTRIC LIFT FOR WORKTOP

Height-adjustable 280 mm. Includes 2 telescopic legs, 4 brackets, cross brace and switch

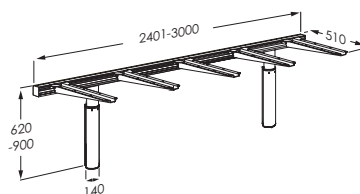
Order Code: **EP-RK1013**

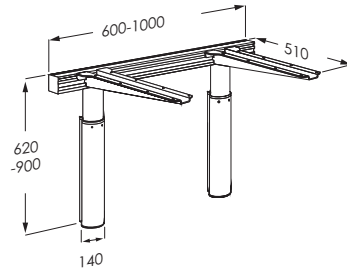


2401 - 3000MM ELECTRIC LIFT FOR WORKTOP

Height-adjustable 280 mm. Includes 2 telescopic legs, 5 brackets, cross brace and switch

Order Code: **EP-RK1014**

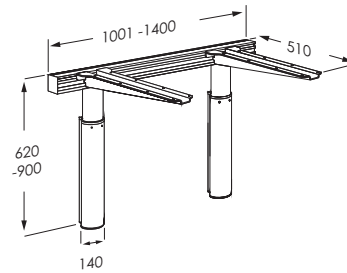




600 -1000MM MANUAL LIFT FOR WORKTOP

Height-adjustable 300 mm.
Includes 2 telescopic legs, 2 brackets,
cross brace and crank handle

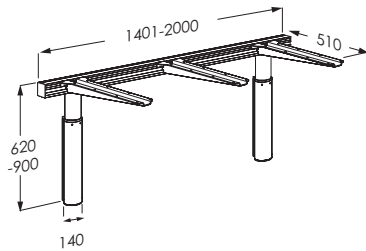
Order Code: **EP-RK1110**



1001 -1400MM MANUAL LIFT FOR WORKTOP

Height-adjustable 300 mm.
Includes 2 telescopic legs, 2 brackets,
cross brace and crank handle

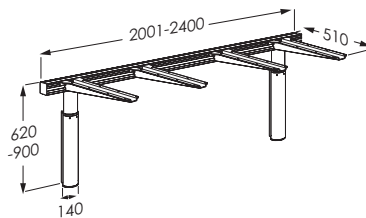
Order Code: **EP-RK1111**



1401 -2000MM MANUAL LIFT FOR WORKTOP

Height-adjustable 300 mm.
Includes 2 telescopic legs, 3 brackets,
cross brace and crank handle

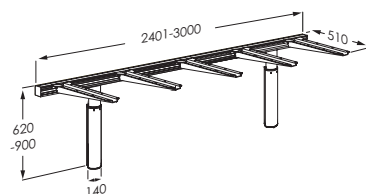
Order Code: **EP-RK1112**



2001 -2400MM MANUAL LIFT FOR WORKTOP

Height-adjustable 300 mm.
Includes 2 telescopic legs, 4 brackets,
cross brace and crank handle

Order Code: **EP-RK1113**



2401 -3000MM MANUAL LIFT FOR WORKTOP

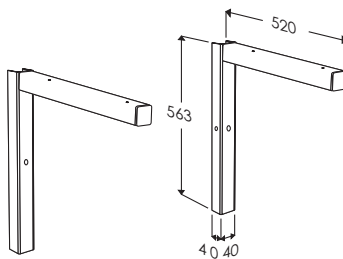
Height-adjustable 300 mm.
Includes 2 telescopic legs, 5 brackets,
cross brace and crank handle

Order Code: **EP-RK1114**

600 -1400MM BRACKET FOR WORKTOP

Height-adjustable 250 mm
Includes 2 wall fittings and 2 brackets

Order Code: EP-RK1100

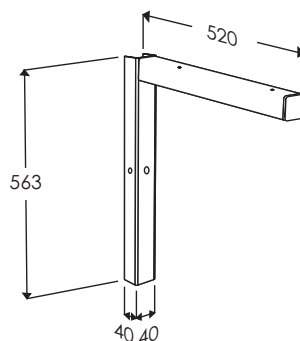


BRACKET FOR WORKTOP

Worktops greater than 1400mm in length require an extra bracket every 800mm

Height-adjustable 250 mm
Includes 1 wall fittings and 1 bracket

Order Code: EP-RK1101

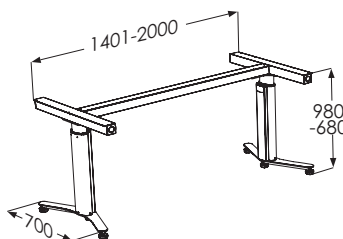


1400 - 2000 MM ELECTRIC LIFT FOR FREE-STANDING WORKTOP

Height-adjustable 300 mm. Includes 2 telescopic legs, longitudinal and cross braces and switch.

Recommended overhang of 200 mm at both ends for wheelchair access

Order Code: EP-RK1081

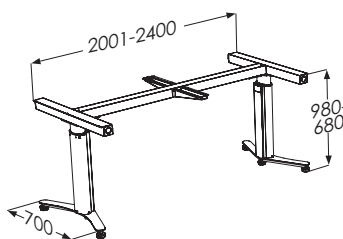


2001 - 2400 MM ELECTRIC LIFT FOR FREE-STANDING WORKTOP

Height-adjustable 300 mm. Includes 2 telescopic legs, 2 brackets, longitudinal and cross braces and switch.

Recommended overhang of 400 mm at both ends for wheelchair access

Order Code: EP-RK1082

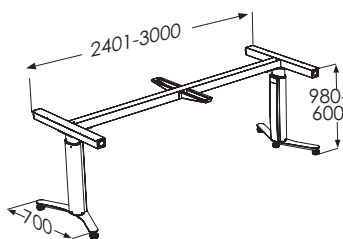


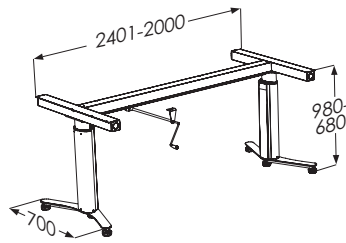
2401 - 3000MM ELECTRIC LIFT FOR FREE-STANDING WORKTOP

Height-adjustable 300 mm. Includes 2 telescopic legs, 2 brackets, longitudinal and cross braces and switch.

Recommended overhang of 400 mm at both ends for wheelchair access

Order Code: EP-RK1083



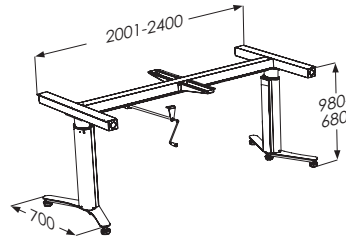


1400 - 2000MM MANUAL LIFT FOR FREE-STANDING WORKTOP

Height-adjustable 300 mm. Includes 2 telescopic legs, longitudinal and cross braces and switch.

Recommended overhang of 200 mm at both ends for wheelchair access

Order Code: **EP-RK1181**

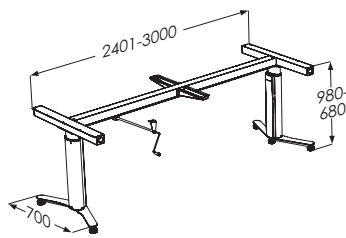


2001 - 2400MM MANUAL LIFT FOR FREE-STANDING WORKTOP

Height-adjustable 300 mm. Includes 2 telescopic legs, 2 brackets, longitudinal and cross braces and switch.

Recommended overhang of 400 mm at both ends for wheelchair access

Order Code: **EP-RK1182**

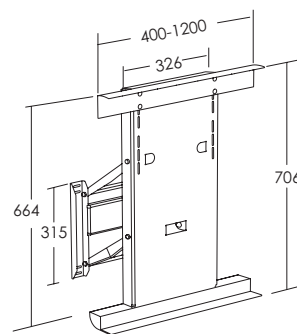


2401 - 3000MM MANUAL LIFT FOR FREE-STANDING WORKTOP

Height-adjustable 300 mm. Includes 2 telescopic legs, 2 brackets, longitudinal and cross braces and switch.

Recommended overhang of 400 mm at both ends for wheelchair access

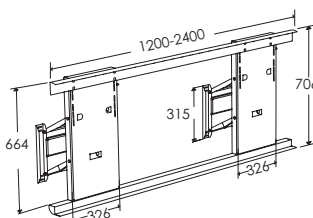
Order Code: **EP-RK1183**



400 - 1200MM ELECTRIC LIFT FOR WALL CUPBOARD

Diagonally adjustable 430/180 mm. Includes 1 lift motor, 2 cross braces and switch

Order Code: **EP-RK1020**



1201 - 2400MM ELECTRIC LIFT FOR WALL CUPBOARD

Diagonally adjustable 430/180 mm. Includes 2 lift motors, 2 cross braces and switch

Order Code: **EP-RK1021**



FREQUENTLY ASKED QUESTIONS

TAPWARE

Enware offers an extensive range of flexible and functional tapware solutions suitable for those with minor difficulties through to the more specialised needs of those with a disability.

The elderly mostly prefer to use 3 piece basin sets – it's a generational thing, especially for dementia patients who rely mostly on their oldest memories which was a time before the flick mixer was invented. There is, however, movement within the industry towards single lever mixers as they are user friendly and over time they will work well with modern bathroom designs. Touch free electronic tapware is also an option because of their hygiene and safety features.

“Can handles and tapware be powder coated to indicate hot and cold?”

YES. All handles can be powder-coated except the single lever mixer handle. However, colour indicators are provided on all our tapware as a standard feature

“Can shower mixers be supplied with smaller backing plates?”

The backing plate size is fixed as it provides access for ease of service and it is the cover for the in-wall box which is used to prevent water leakage into the wall cavity.

“Can handles be supplied in different lengths?”

Many of Enware's tapware offerings have varying lever handle lengths available to suit degrees of accessibility.

“Can you have more prominent hot and cold indicators on Enware Oras basin mixer taps?”

YES. Take a look at our SLM606 models on page 36.

“What makes the performance of the Oras 'touch free' tapware superior for a wide variety of installations?”

These products incorporate the most advanced intelligent self- setting sensor technology to help minimises false activation - which may be caused by reflective surfaces or high traffic areas.

“How to address the issue of someone with dementia leaving taps on at sink or basin?”

Patient supervision and choosing basins with overflows.

IFO BASINS AND CABINETS

Enware is proud to distribute the IFO range of sanitary products in Australia and New Zealand. This quality range of products is manufactured to the highest international standards. With a Swedish based factory and a history dating back to 1886 IFO is a well-established and a highly regarded market leader.

The clean, elegant, functional and timeless IFO ranges of fixtures and fittings include basins, toilets, urinals, and bathroom vanities

“Are IFO basins available in 3 tap holes? and with or without overflow?”

YES. The Sign 600, 700, 900, 1200 and 1500 basins can be drilled into 3 taphole versions all with or without overflow

“Do you have overhead cabinets?”

We do not supply overhead cabinets as it is preferable for an Aged Care en-suite to have cabinets within easy reach without stretching.

“What are the cabinet options? What IFO basins can they be installed on?”

IFO's cabinet range is modular, so you can combine cabinets to match various basins. Available in 300, 600 and 900mm options.



FREQUENTLY ASKED QUESTIONS

IFO TOILETS & TOILET SEATS

“Are IFO toilets suitable for high care areas?”

YES. They offer:

- Increased height for hip support
- Cistern back rest for increased independence
- Tapered seat edge that locks the seat in during transfer from and to the toilet with less risk of falls reducing the incidences of broken seat hinges
- No cistern lid for a better and safer dementia care environment (less things to tamper with)
- Cistern also works as a support mechanism for the user to lean against by hand without the cistern lid slipping off
- Robust close coupled design has proven to be a good combination with ceiling lifting systems where the user can be lowered directly onto the pan with immediate back support from the cistern
- The optional increased height flush button can be flushed easily with a wrist or even a cupped hand by residents suffering from arthritis

“Can IFO toilets be set in a traditional way or at 45 degrees to ensure adequate space for the users and staff?”

YES. They can be set up in both configurations.

A 45 degree angle set-up within one of the corners of the bathroom is a space saving solution and allows for users and staff to have access on both sides of the toilet. This allows for the smallest possible bathroom footprint with the required rotation circle for wheel - and/or shower commode chairs.

“What are the colour contrast seat options?”

Anthracite Grey & Blue which are the best options for dementia users.



SUPPORT ARMS

“Why are support arms preferable to grab rails?”

Support arms are always installed in a consistent position in combination with the toilet and are usually easier to use. With optional toilet paper holder and nurse call buttons installed within the support arms easy reach for the user is ensured. Support arms can be raised up and out of the way for staff access or a patient side transfer.

“Is the toilet available with 1 support arm only as I need to have a fixed arm on the wall?”

The IFO support system is sold with two arms (a left and a right hand arm). Each arm can be de-mounted and be taken off either side without compromising the stability of the other arm.

“Do the support arms come with toilet roll holders?”

There is a toilet roll holder on both the left and the right arm. They can also be de-mounted if the user wishes only one or none at all.

“What colours do the IFO support arms come in?”

They only come in white with dark grey handles.



Enware has extensive experience in the Aged Care and Disability markets. We have completed over 200 projects in partnership with some of Australia's leading aged care operators, health facilities, architects, government and construction developers.

Enware has been chosen for these projects for our proven expertise and credibility and our ability to offer advice on product suitability, installation, WH&S regulations and compliance with relevant Australian Standards and guidelines.

We provide solutions that deliver a high degree of user comfort, dignity, respect and safety for users and carers – so choose Enware with confidence.



“We have found that Enware’s aged care solutions suit the needs of our clients very well, covering independent living to high care, including the special needs of people with dementia. The quality is outstanding, the design is timeless yet modern and we are backed with a great service”

Erica Lambert
Development Manager
Paynter Dixon QLD

Aegis Care Group

Albany Hospice

Amaroo Village

Aminya Aged Care

Anglican Care

Anglican Retirement Villages

Ashman Grove Aged Care

Baptist Care

Bupa Eldercare

Cabrini Health

Cranbrook Care

Estia Health

Hunter Housing Inc

Kennedy Health

LHI Retirement Services

Longridge Aged Care

Lutheran Community Care

Mary MacKillop Aged Care

Masonic Care

Maurice Ziefert Homes

Moran Health Care Group

Nazareth Care Australasia

Regis Aged Care

Resthaven Aged Care

Royal Australian Air Force Aged
Care Services

Southern Cross Care

St Basil's

St Vincent's Aged Care Facilities

Star of the Sea Aged Care

Summit Care

Uniting Care

Whyalla Aged Care

INDEX

PRODUCT	PAGE
ATABC2L3	24
ATABC2L5	24
ATABC2L6	24
ATAMC2L3	24
ATAMC2L5	24
ATAMC2L6	24
ATM606D-4	10
ATM608	30
ATM611	26
ATM620	24
ATM621	24
CARE101	38
CARE301	38
CARE501	38
CARE502	38
CARE503	38
CARE601	11
CARE6861	39
CARE6872	39
CAREAMBS	39
CD631	51
CDF300D	42
CDF300DC	42
CDF320D	43
CDF320DC	43
CDF330D	42
CDF330DC	43
CDF340D	43
CDF340DC	43
CDF400D	43
CDF401D	43
CD-FW40	47
CD-SS964	39
DET306	16
DET608	17
EBTW610R	47
ENM6050	26
ENM6120	27
ENM6222	33

PRODUCT	PAGE
ENM6250	26
ENM6450	27
EP-R1100000	50
EP-R1151	50
EP-R1170	51
EP-R1175	52
EP-R1600000	52
EP-R1651000	52
EP-R2051000	47
EP-R3085000	50
EP-R3085112	50
EP-R3108000	45
EP-R3108112	45
EP-R4550182	53
EP-R4580182	53
EP-R4650	53
EP-R5510000	52
EP-R5520182000	52
EP-R7410182000	53
EP-R7410182112	53
EP-R7430182000	11
EP-R7430182112	11
EP-R7450182112	53
EP-R8538021	45
EP-R9864182	45
EP-RK1010	56
EP-RK1011	56
EP-RK1012	56
EP-RK1013	56
EP-RK1014	56
EP-RK1020	59
EP-RK1021	59
EP-RK1081	58
EP-RK1082	58
EP-RK1083	58
EP-RK1100	58
EP-RK1101	58
EP-RK1110	57
EP-RK1111	57

PRODUCT	PAGE
EP-RK1112	57
EP-RK1113	57
EP-RK1114	57
EP-RK1181	59
EP-RK1182	59
EP-RK1183	59
EVC220	15
EVC300	13
EWS505B	47
EWS600	31
FS728	35
FWS131	32
FWS730D	31
FWS830D	32
IFO15917	27
IFO2360-100MHKIT	26
IFO2362-100	27
IFO4316FM2	24
IFO4346	48
IFO4346F-770	14
IFO4346F-900	12
IFO553000-BD1999	39
IFO554000-BD1999	39
IFO554112-BD1999	39
IFO624000-DO39999	39
IFO6860	39
IFO6862	39
IFO724D55999	39
IFO7318	31
IFO7360-100MHKIT	46
IFO7362	18
IFO7362-100	18
IFO7370-100MHKIT	46
IFO7460-100MHKIT	47
IFO7462	12
IFO7470-100MHKIT	47
IFO7472	12
IFO7492	16
IFO7750-100MHKIT	47

PRODUCT	PAGE
IFO7752	14
IFO7760-100MHKIT	47
IFO7762	14
IFO96377	14
IFO96487	49
IFO96487L	12
IFO96487R	12
IFO98125	11
KITB02	29
KITB03	29
KITB08	28
KOL31780T1O1	10
KOL31781T1O1	10
LEV150306	26
LEV150307	34
LEV150401	24
LEV150402	25
LEV150420	25
LEV80306	37
LEV80308SQ	40
LEV80306XWSQ	25
LEV80308	40
LEV80364C	41
PZL316D	40
SGR010	23
SGR012	11
SGR013	23
SGR014	40
SGR023	21
SGR023C	19
SGR027CT	11
SGR028TL	45
SGR029TR	23
SLM306A-4	31
SLM307A	35
SLM309A-4	35
SLM364C	41
SLM606	36
SLM606D-4	36

PRODUCT	PAGE
SLM606ESD	44
SLM607	35
SLM608	45
SLM664C	41
SLM809	35
SP262	40
TFC712000	17
TFC740510	37
TWY-AV1968WH	48
TWY-SA1968WH	48
VP314	30
VP315	30
WBBCD65-165-5	19
WBBCD65-165-6	19
WBBSQ65-165-5	12
WBBSQ65-165-6	12
WBDMCD65-165-5	14
WBDMCD65-165-6	14
WBSHSQ65	13
WBWTCD65-LTC	19
WBWTCD65-RTC	19



aged care and disability solutions

1300 369 273 (AUS) | www.enware.com.au | info@enware.com.au