



Sydney Water MLIM Solutions

SUB METERING MADE EASY

FIRST SYDNEY WATER APPROVED SYSTEM

BMS AND DATA SHARING APPROVED

 **ENWARE**
installing **confidence**

Sydney Water

Multi-Level Individual Metering (MLIM) Policy

The Sydney Water MLIM Policy has been developed to improve equality in billing for water usage in multi-level developments.

These requirements will apply for most new multi-level buildings.

As of 1 September 2014 it is mandatory to: **design and construct buildings with appropriate pipework and space for individual meters** and to **install a metering system to enable individual billing**.

Enware provides solutions designed to make it easier to meet your new building requirements.

FIRST
SYDNEY WATER
APPROVED
SUPPLIER

Sydney Water has rigorous trials and testing and Enware was the first approved supplier of metering systems

DATA
SHARING
ENABLED

Data Sharing Enabled – Sydney Water approved system for building management system (BMS) connection

ENWARE IS
ISO9001
ACCREDITED



Enware is an ISO9001 accredited company

ENWARE
METERS ARE
NMI
APPROVED

Quality
Endorsed
Company
ISO 9001 Lic 1213
SAI Global

LOCAL STOCK
AND SUPPORT
WITH ONSITE
ADVICE



installing**confidence**



PARDOVO (KOTLIK)
15.4
2025/26



sub metering solutions made simple

Enware is located in southern Sydney so our fully trained team can offer truly local support and service throughout your entire project. We aim to form a partnership in the early project stages to ensure site requirements are understood enabling us to provide a complete solution for each project.

Hydrus from Enware provides static ultrasonic water metering for accurate measuring and recording for all applications of water supply.

Our qualified technical team will ensure your system is installed, commissioned and fully operative on time.

Enware can assist with your project's entire sub-metering system:

- project management
- delivery
- installation
- commissioning
- ownership transfer to Sydney Water
- on site advice

ENWARE CAN PROVIDE 2 FUNDAMENTAL OPTIONS DEPENDING ON YOUR BUILDING TYPE



AMI Advanced Metering Infrastructure

A metering system to be used in buildings with **four floors or more**. This system transmits individual meter reading data directly to Sydney Water using the mobile phone network.*

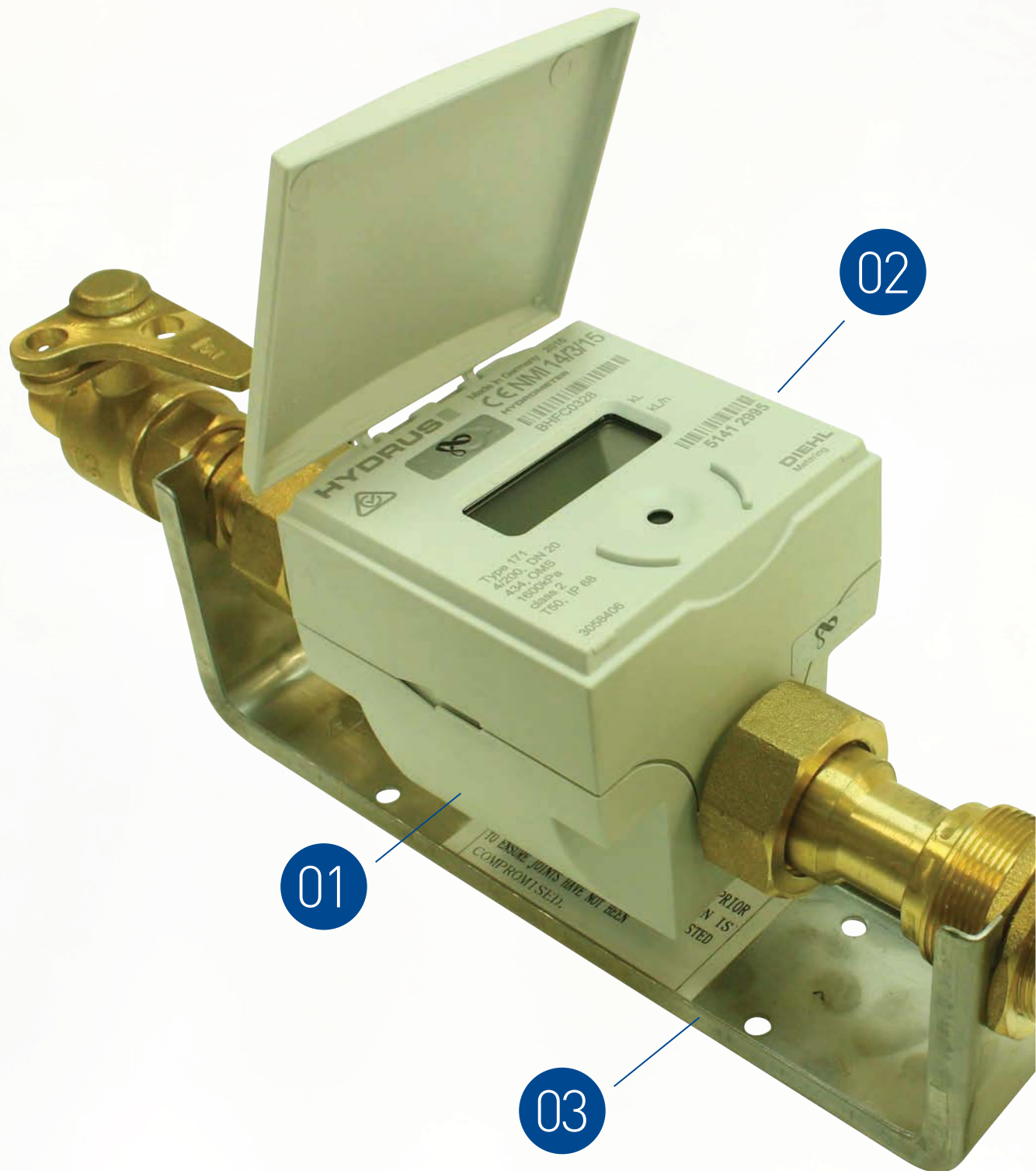


AMR Automated Meter Reading

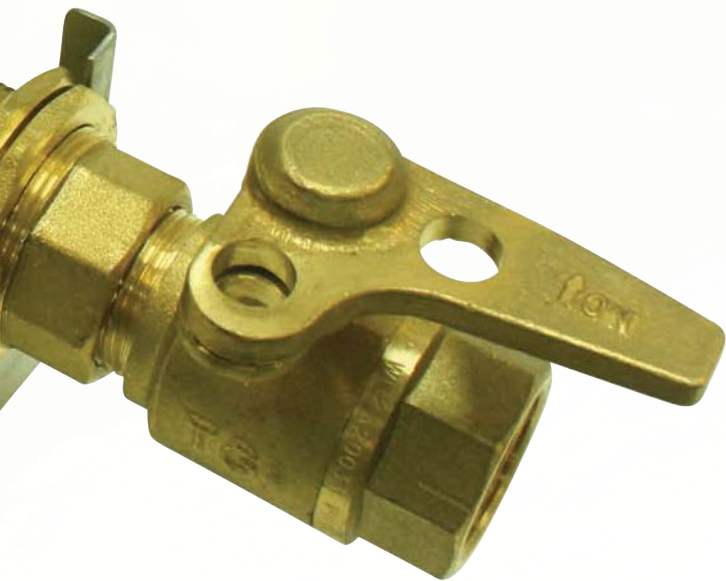
A metering system to be used in buildings **three floors or less**. This system will allow the meter reader to electronically read all of the individual meters from outside the building using a handheld reader.*

* as defined in Section 3 of the Sydney Water Multi-level Individual Metering Guide

smart communication is standard with Hydrus



With an innovative combination of ultrasonic technology and integrated communication, the HYDRUS water meter is the ideal foundation to shape your sub-metering solution.



01 Ultrasonic Meter Technology

- Compact design, single unit for both water measurement and communication
- No moving parts and greater accuracy
- IP 68 rated for protection against dust and immersion in water
- Battery lifetime up to 16 years

02 Data Integrity

- All data from the meter is sent as displayed - no additional components required
- Secure data transmission with DES (Data Encryption Standard) & Advanced Encryption Standard (AES) for Open Metering System (OMS)
- Alarms for: reverse flow, no consumption 'leaks', failure of ultrasonic or temperature element, low temperature (below 3°C), air in the measuring path, no volume measurement, low battery alarm (< 400 days)
- LCD display for current total volume, current flow rate, remaining battery life (Date), errors and alarms

03 Installation Bracket

- Supplied with a sub-meter bracket for quicker installation
- Includes twin lockable ball valves for easy meter installation
- ¾" BSP FI inlet and ¾" BSP MI outlet for pipework connection

Advanced Metering Infrastructure

A metering system to be used in buildings with four floors or more. This system transmits individual meter reading data directly to Sydney Water using the mobile phone network.*

To achieve this, Enware captures meter data and transfers it to Sydney Water using a series of data loggers. We will work closely with you, to commission the system and transfer ownership to Sydney Water at the completion of the project.



HYDRUS ULTRASONIC COLD WATER METER 20MM WITH BRACKET

- Ultrasonic Meter Technology compact design, single unit for both water measurement and communication
- No moving parts and greater accuracy
- IP 68 rated for protection against dust and immersion in water
- Battery lifetime up to 16 years
- All data from the meter is sent as displayed - no additional components required
- Secure data transmission with DES (Data Encryption Standard) & Advanced Encryption Standard (AES) for Open Metering System (OMS)
- Alarms for: reverse flow, no consumption' leaks' failure of ultrasonic or temperature element, low temperature (below 3°C), air in the measuring path, no volume measurement, low battery alarm (less than 400 days)
- LCD display for Current Total Volume, current Flow Rate, Remaining Battery Life (Date), Errors and Alarms
- Supplied with a sub-meter bracket for faster installation time
- Includes twin lockable ball valves for easy meter installation
- ¾" BSP FI inlet and ¾" BSP MI outlet for pipework connection



IZAR RADIO MODULE

- External radio module for meters with pulse transmitter or open collector interface
- Ideal for difficult access areas
- For all types of meters with pulse transmitter or open collector interface
- Transmission of meter data by radio to mobile or stationary receivers
- Simple installation
- On-site-programming using IrDA interface
- Storage and transmission of up to three due date values
- Battery powered with a typical lifetime of 15 years



IZAR RDC STANDARD

- Smart Metering transceiver with a multi-utility approach designed for a fixed radio network
- Collection & processing of up to 500 radio devices with remote and local configuration
- Secure and flexible data export to FTP-server
- Intelligent telegram filter
- Automatic time synchronisation via Network Time Protocol (NTP)
- Downward-compatible with IZAR RADIO products
- Individual data logging
- Receiving of meter data via 434 MHz
- Compression and encryption for data transport
- Intelligent and modular installation concept



* as defined in Section 3 of the Sydney Water Multi-Level Individual Metering Guide





AMR

Automated Meter Reading



A metering system to be used in buildings three floors or less. This system will allow the meter reader to electronically read all of the individual meters from outside the building using a handheld reader.*

As the contractor, Enware will work closely with you, to commission the system and transfer ownership to Sydney Water at the completion of the project.

HYDRUS ULTRASONIC COLD WATER METER 20MM WITH BRACKET

- Ultrasonic Meter Technology compact design, single unit for both water measurement and communication
- No moving parts and greater accuracy
- IP 68 rated for protection against dust and immersion in water
- Battery lifetime up to 16 years
- All data from the meter is sent as displayed - no additional components required
- Secure data transmission with DES (Data Encryption Standard) & Advanced Encryption Standard (AES) for Open Metering System (OMS)
- Alarms for: reverse flow, no consumption' leaks' failure of ultrasonic or temperature element, low temperature (below 3°C), air in the measuring path, no volume measurement, low battery alarm (less than 400 days)
- LCD display for Current Total Volume, current Flow Rate, Remaining Battery Life (Date), Errors and Alarms
- Supplied with a sub-meter bracket for faster installation time
- Includes twin lockable ball valves for easy meter installation
- ¾" BSP FI inlet and ¾" BSP MI outlet for pipework connection



IZAR RADIO MODULE

- External radio module for meters with pulse transmitter or open collector interface
- Ideal for difficult access areas
- For all types of meters with pulse transmitter or open collector interface
- Transmission of meter data by radio to mobile or stationary receivers
- Simple installation
- On-site-programming using IrDA interface
- Storage and transmission of up to three due date values
- Battery powered with a typical lifetime of 15 years



* as defined in Section 3 of the Sydney Water Multi-level Individual Metering Guide

