



ARISTON



AURES SLIM

ELECTRIC INSTANTANEOUS SINGLE POINT WATER HEATERS



Compact, efficient, very quick and elegant, the new Aures electric instantaneous water heaters are the ideal solution for having **hot water immediately ready** right after you open the tap.



**SINGLE
POINT**

Hot water to a
single point



**TOTAL
SAFETY**

Double Safety
Thermostat



**IP25
WATERPROOFING**

Installation in the
shower cubicle



**EASY
INSTALLATION**

Easy to install
and maintain



**ENERGY
EFFICIENT**

Limited water and
heat loss



**ITALIAN
DESIGN**

Designed by
Umberto Palermo

010 745 9910

info.za@aristonthermo.com

www.ariston.com



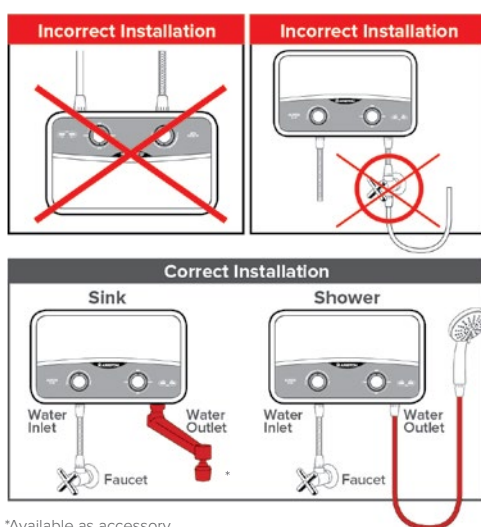
AURES SLIM FEATURES AND BENEFITS

COMFORT REGULATION:

- / SLIM FLOW 7kW: Take full control of your comfort with a Flow regulating dial and Power dial
- / SLIM 3,5kW: Set your desired power with an easy to use power dial

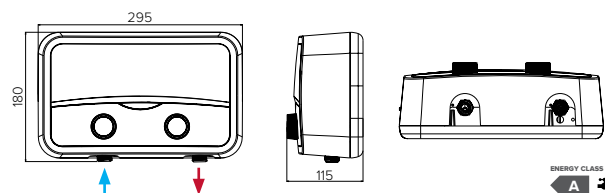
INSTALLATION (WALL MOUNTED ONLY)

SINGLE POINT supplies only one water point directly connected to the appliance (unpressurised).



Shower head with 3 spray setting - accessory included

TECHNICAL INFORMATION



	AURES SLIM	AURES SLIM FLOW
Model Name	Aures S 3.5 SH UAE	Aures SF 7 SH EU
Product Code	3520219	3520019
ErP Class	A	
Power (KW)	3,5	7
Type	Single Point Installation - Oversink	
Voltage (V)	220 - 240	
Phase	Single Phase	
Ampere (A)	15,9	31,8
Recommended fuse rating (Amps)	20	40
Recommended Cable Size	2,5mm ²	6mm ²
Frequency (Hz)	50/60	
Heating Element	Copper	
Working Pressure (Min - Max)	20kPa ~ 800kPa	
Max Working Temp (°C)	55	
IPX Rating	IP25	

UNDERSTANDING PERFORMANCE

The temperature and flow rate of the water entering the product determines how well it performs.

Flow rate - For higher performance (temperature), reduce the flow rate (use the below chart for guidance).

PERFORMANCE		
MODEL	ΔT (°C)	FLOW RATE (L/MIN)
AURES S 3.5 SH UAE Single Point	20	2,5
	25	2,0
	30	1,7
AURES SF 7 SH EU Single Point	20	5,0
	25	4,0
	30	3,3

Ambient water temperature – The product can only heat the water by a certain amount of degrees (ΔT). In winter when the incoming water temperature is colder, the output water temperature will be less. Please reduce the flow rate to compensate.



The warranty period is valid from your purchase date (please retain proof of purchase) and on condition that the unit was installed by a qualified electrician in accordance with the instructions enclosed in the unit.



For further information visit our website ariston.com
Ariston Service 010 745 9911

